

LSBU Group Civic Statement



EST 1892

LSBU

London South Bank University (LSBU) was founded in 1892 with a civic mission to “promote the industrial skills, general knowledge, health and wellbeing of young men and women”.

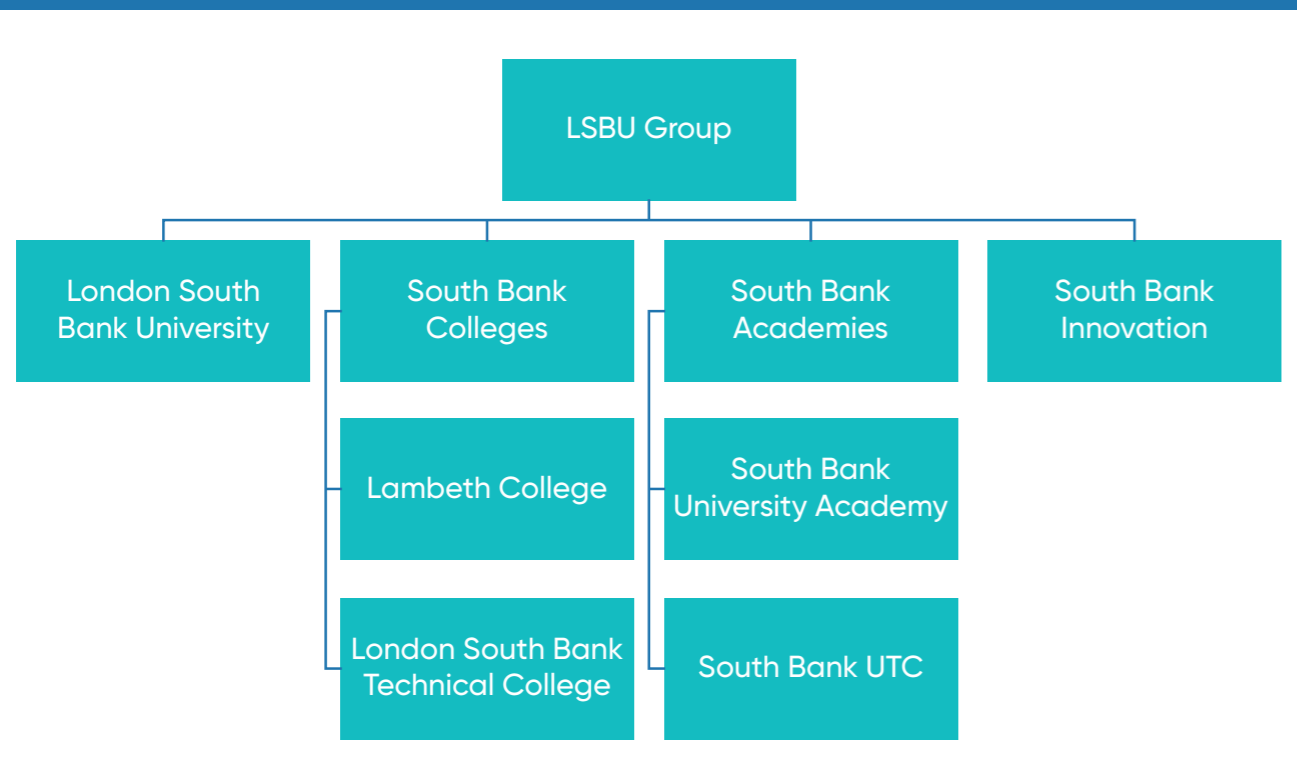
In the 130 years since, LSBU has remained committed to supporting and enhancing the opportunities for local people and employers in south central London. Our most recent Corporate Strategy (2020-25) sets out this institutional vision as: “transforming lives, communities, businesses and society through applied education and insight”.



LSBU Group

In 2019, London South Bank University established LSBU Group – a unique collaboration between local higher, further and secondary education.

LSBU Group comprises South Bank Academies, South Bank Colleges, South Bank Innovation and London South Bank University. The Group works to one vision and seeks to deliver a holistic solution to the educational needs of our local communities and businesses.



Our Partners

LSBU Group pursues its civic mission by working with partner organisations including:

Local Government

Our local councils, are democratically accountable to deliver the needs of our community. We are committed to supporting our local government partners deliver their strategic priorities and have formal Memorandums of Understanding (MOUs) with:

- The London Borough of Southwark (signed 2014, renewed June 2021)
- The London Borough of Lambeth (signed 2016, renewed October 2020)
- The London Borough of Lewisham (signed 2019).

Local Business

We work with around 1500 employers, providing training and apprenticeships, knowledge transfer partnerships and innovation support. We are actively involved in local business representative organisations including:

- WeAreWaterloo Business Improvement District
- South Bank Employers Group
- Southwark Chamber of Commerce
- Southside Chamber of Commerce

Health Organisations

We educate one fifth of all new nurses in London. We work with over 60 NHS Trusts across London, including Guy's and St Thomas' NHS Foundation Trust which sponsors South Bank UTC.

Education Institutions

To promote pathways into higher education for partners across London and the south east we have MOUs with a number of further education institutions via our Associate College Network:

- Morley College
- Orbital South College Group
- Croydon College Corporation
- Brooklands College

Our Commitment to South Central London

By working with and supporting our partners we commit to:

Providing high-quality professional and technical education

- By positively impacting 1 million lives by 2025
- By providing education and skills pathways through the LSBU Group, aligned to careers that support people of all characteristics, talents and levels to achieve their potential
- By becoming one of the leading UK providers of higher and degree apprenticeships – teaching 10,000 apprentices by 2030.

Working with business to promote opportunity and prosperity

- By generating £5 billion of economic impact by 2025
- By utilising Group research and enterprise expertise to provide coordinated support to local business at all levels whether the need is facilities, technical support or high-quality insight

Supporting the transition to Net Zero

- By training a new generation of retrofitters through our Green Skills Hub and BSRIA LSBU Net Zero Building Centre.
- By using our research to contribute to a carbon-neutral built environment through the next generation of heating, cooling and power systems including – heat pumps, smart grids and photovoltaics

Supporting the health and wellbeing of local people

- By continuing to be a leading provider of nursing, midwifery and allied health professional training in London
- By utilising our research to improve and re-shape health and social care through systems innovation

Professor David Phoenix OBE
Chief Executive LSBU Group

