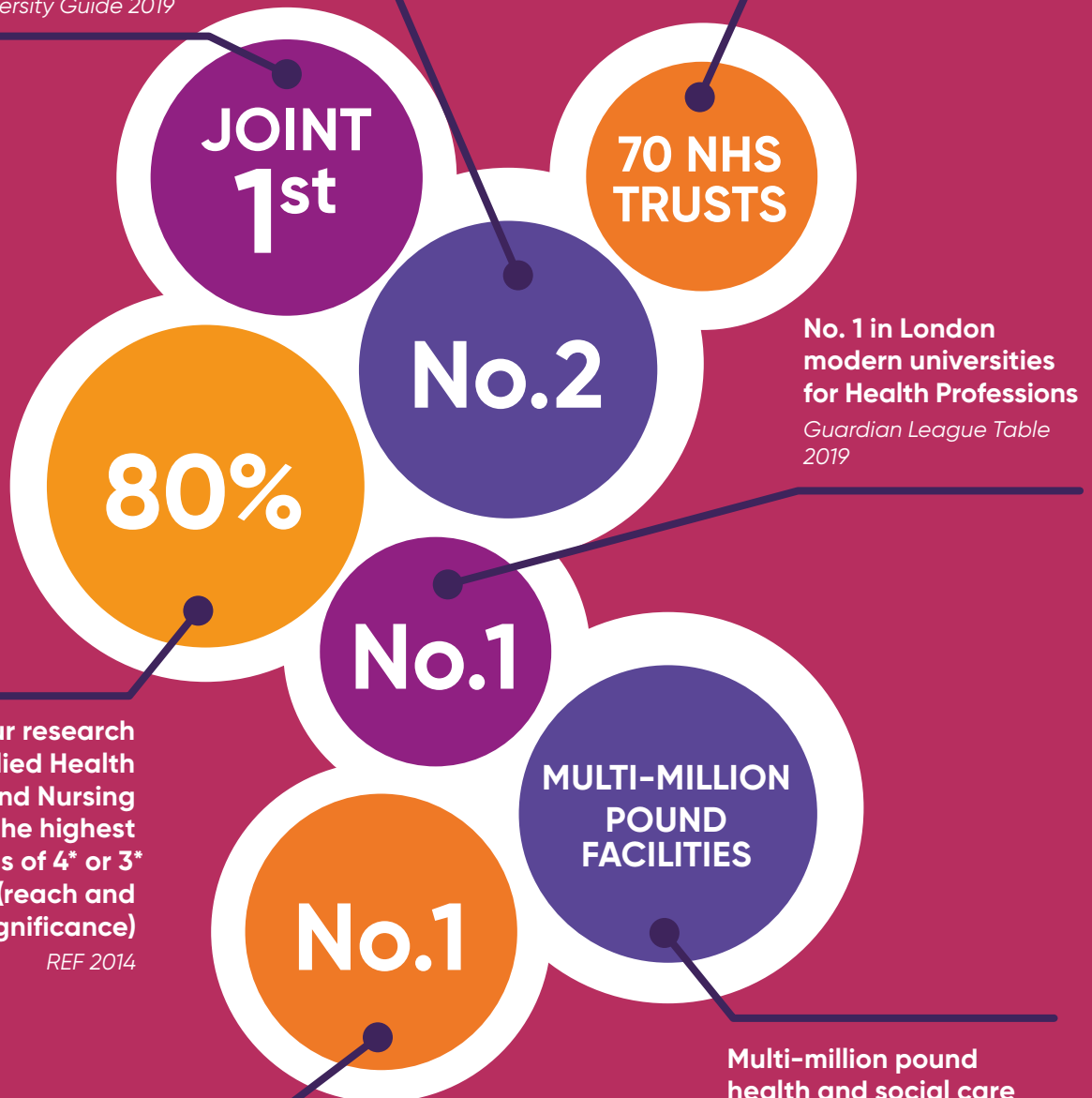


London South Bank University School of Health and Social Care

No. 2 London university for Career Prospects in the Health Professions
Guardian University League Table 2019

Works with over 70 NHS trusts and is one of the largest provider of pre-registration children's nursing

Joint 1st for graduate prospects in Nursing in the UK
The Complete University Guide 2019



No. 1 in London modern universities for Health Professions
Guardian League Table 2019

80% of our research into Allied Health Professions and Nursing was awarded the highest quality ratings of 4* or 3* for 'impact' (reach and significance)
REF 2014

The School provides on-the-ground teaching and distance learning programmes in Nursing and Radiography in Hong Kong, Singapore and Malaysia

Multi-million pound health and social care facilities at our Southwark campus host a suite of sophisticated skills laboratories featuring many of the latest healthcare innovations



London South Bank University

EST 1892

School of Health and Social Care

Apprenticeship Programmes & the Institute of Vocational Learning

LSBU is at the forefront of the new Higher and Degree Apprenticeship delivery. The School of Health and Social Care has multiple cohorts of Assistant Practitioner, Nursing Associate and Nursing Degree Apprenticeships with programme starts throughout the academic year.

The Institute of Vocational Learning within the School of Health and Social Care has been at the forefront of training for the new role of the Nursing Associate. The School started its first cohort of Trainee Nursing Associates in January 2017 and now with over 100 trainees the Institute holds the largest of the First Wave cohorts .

The Institute has a long history of delivering Foundation Degrees to Assistant Practitioners and was one of the first HEIs in England to offer the Healthcare Assistant Practitioner Apprenticeship.

The School's approach of actively supporting learners who have often been out of education for a significant period of time, alongside its focus on students achieving real world skills to meet the challenges of today's workplaces in the NHS, make the Institute of Vocational Learning a key training provider within the M25.

Excellence in Research

The School's new Centre for Applied Research in Improvement and Innovation (CApRII) researches population and patient needs and service improvements.

The Centre's recent projects which have achieved high impact include:

- Workforce modelling which shows how the number and type of nurses (e.g. registered nurses or healthcare support workers) has a direct effect on safety outcomes such as falls and the management of symptoms like vomiting. The findings show that when these aspects of care are delegated to unregistered nurses or healthcare support workers, there are worse patient outcomes.
- Research into the health of the nursing workforce which has identified the impact of a high prevalence of obesity in the workforce on sickness-absence and delivery to public health.

- Research into the violence, territory, secrecy and intelligence of street gangs identified how these are becoming powerful enterprises adopting 'high volume, low value' business models for drug dealing. The growth of Dark Net and crypto markets provides opportunities for the development of a technology-enabled underworld that could revolutionize organised crime.



Courses Accredited By:



To find out more about how the School of Health and care Social Care can support your business, please contact Anisa Salim: anisa.salim@lsbu.ac.uk (School Executive Administrator)

Applied research in partnership with external bodies

All research undertaken by the School has practical applications, with the majority of projects run in partnership with the NHS. One of the goals of NHS England is that the NHS becomes better at empowering patients and their carers to be involved in the management of their own care. Supporting people in this way can improve motivation, engagement in healthy behaviours, have an impact on symptoms and clinical outcomes, and change the ways in which

people interact with health services. One project explores ways to identify people who are at risk of progressive kidney disease. Another project will identify and support offenders in the criminal justice system who have a learning disability or autism spectrum disorder whose needs are often unrecognised. A specialist forensic service will be piloted at Camberwell Green Magistrates Youth Court.

Innovation in Healthcare

Pain related to the spine is a common musculoskeletal condition. Recent research suggests that the ways that individuals process and interpret sensory information are key to pain management. A research team are developing a low cost sensory assessment tool to help clinicians in practice detect alterations in sensory processing.





London South Bank has an **outstanding record for graduate employment**. It is a shining example of all the **best qualities held by the modern university sector**"

Alistair McCall, Editor of the Good University Guide

21st of all UK universities for graduate prospects
Complete University Guide 2019

Entrepreneurial University of the Year
THE Award 2016

University of the Year for Graduate Employment second year running
The Times and The Sunday Times Good University Guide 2018 and 2019

LSBU's Clarence Centre for Enterprise and Innovation ranked second in the UK
UBI Global World Rankings 2018

ENTREPRENEURIAL UNIVERSITY OF THE YEAR

21ST

GRADUATE EMPLOYMENT

NO 2

TOP 4

LEADER IN APPRENTICESHIPS

NO 1

In the top 4 UK universities for graduate outcomes
Destinations of Leavers from Higher Education (DLHE) 2017/18

LSBU's Business Solutions Centre won the award for the Enterprising Learning Provider of the Year at the IOEE's Celebrate Enterprise event in May

Home to the Passmore Centre, a hub for employers and apprentices. The only national provider of level 6 Architectural Assistant apprenticeships

TOP 10

Top 10 UK university for graduate starting salaries
The Times and The Sunday Times Good University Guide 2019



London South Bank University

EST 1892