



**London
South Bank
University**

EST 1892

**UNIVERSITY
OF THE
YEAR FOR
GRADUATE
EMPLOYMENT.
AGAIN.**

London South Bank University Undergraduate Prospectus 2020

* The Times and The Sunday Times Good University Guide 2018 and 2019

**WITH A CAN
DO ATTITUDE,
YOU CAN GO
DO ANYTHING.**



WELCOME

I'd like to welcome you to London South Bank University (LSBU). You'll be joining a university with a long and rich history of helping those with a can do, go do attitude to succeed.

The University was founded 127 years ago in the heart of London with the purpose of creating professional opportunities for our students. This is still very much our mission today.

As an LSBU student, you'll benefit from courses that are either accredited or developed in partnership with relevant industries, and learn from academics that are professionals in their chosen fields. You'll find a curriculum that's enriched with cutting-edge, work-based projects and have the opportunity to go on placements that will give you the experience and knowledge you need to succeed in the real world.

Our students are diverse, talented and enterprising. We empower every individual, regardless of their prior achievements, to realise their full potential. Our approach works. It's why more LSBU students than ever are in graduate jobs six months after leaving and we were ranked Top 10 in the UK for graduate starting salaries*.

This, combined with a location that offers unlimited professional networking opportunities, makes it no surprise that this year The Sunday Times named us University of the year for Graduate Employment for an unprecedented second year in a row.

You'll get all the support you need at every stage of your journey from our award-winning Student Services team.**

I'm really pleased that you're thinking of joining us. Enjoy looking through the prospectus – it should give you a good overview of LSBU and why so many ambitious people love studying here.

Professor David Phoenix OBE,
Vice-Chancellor

*The Times and The Sunday Times Good University Guide 2018

**Outstanding Student Services. Times Higher Education Leadership and Management Awards 2018

CONTENTS

4	University of the Year for Graduate Employment. Again.
6	Beyond Enterprising
10	Impact Driven Research
12	Life in London
18	Your life at LSBU
22	Students' Union
26	Courses
114	Essential Info
116	Apprenticeships
122	Entry Requirements
124	Applying to LSBU
128	Fees and Funding
132	Info for International Students
134	Accommodation
138	You Should Be Here!
140	Index

UNIVERSITY OF THE YEAR FOR GRADUATE EMPLOYMENT. AGAIN.

*The Times and Sunday Times Good University Guide 2018 and 2019

Applied. Accredited. Professional.

Teaching that equips you for the real world

At LSBU, we believe teaching should be based on the real world and its challenges. You'll learn from industry leaders who apply a professional context to their teaching and we make sure you gain the practical experience you need to appeal to employers.

Since the majority of our courses are accredited by professional bodies, you'll boost your prospects even further. It's why we've won University of the Year for Graduate Employment* for an unprecedented second year in a row.

Industry links

Strong links with employers in the private and public sectors mean we're up to date with industry needs. Many of our courses feature work placements, giving you invaluable insights into your chosen field.

Our professional partners include Transport for London, BAFTA, BBC, JP Morgan, Balfour Beatty, Metropolitan Police Service, LadBible and Great Ormond Street as well as over 60 NHS Trust partners.

Enhancing your employability

We rank consistently high for graduate starting salaries in The Times University Guides and we're top 4 nationwide for graduate outcomes. Our Employability Service will support you before and after graduation - drop into our JobShop, access our online jobs board, take a workshop at the Careers Gym or visit LSBU Employment, our recruitment agency. You could get your career off the ground before you even graduate.

Silver rating

We've been awarded a silver rating for teaching excellence under the Government's Teaching Excellence Framework (TEF). We're proud to have been recognised for our focus on personalised learning and our emphasis on supporting graduates into employment.

BEYOND ENTER- PRISING



Enterprise is more than just a way of thinking; it's a way of being and a way of doing. It's about developing transferable skills and seizing opportunities that are valuable to any career.

We empower you to develop your entrepreneurial skills and mindset. You'll enhance your employability prospects and take on real-world learning opportunities, whether you start a business, work freelance or find employment.

We provide invaluable advice and mentorship during and beyond your studies and ensure that you learn in a skills-based environment with links to our industry partners. Enterprise is a part of the curriculum at LSBU.

We are also a university partner of IPSE: The Association of Independent Professionals and the Self-Employed, providing exciting opportunities for students who wish to further develop their careers as freelancers and independent consultants.

It's about having the can do, will do, go do attitude to take on any challenge.



The Clarence Centre for Enterprise and Innovation

The award-winning Clarence Centre for Enterprise and Innovation is LSBU's hub for entrepreneurial activity and home to a variety of start-ups and local businesses.

With 72 small businesses on-site, the Clarence Centre works to provide local support to start-ups in the community. It is the base for LSBU's award-winning Student Enterprise team, where successful entrepreneurs share their experiences to inspire our students, develop their mindset and refine their enterprising ideas.

A community of entrepreneurs

Together, we are building a culture of enterprise at LSBU. Activities are delivered and supported by a vibrant on-campus entrepreneurial community that includes university staff, students, alumni and businesses, all with a variety of experiences to share.

Our tenant community:

- 337 jobs created
- £317m combined income
- £13.5m in finance raised
- 3.2m beneficiaries of charitable activities



IMPACT DRIVEN RESEARCH



To succeed in your chosen career, you'll need cutting-edge expertise. Our research projects tackle some of today's most testing issues, often in collaboration with businesses or public bodies, and research informed teaching so that you're always up to date.

Our outward-looking focus enables our research to deliver outstanding cultural benefits, improving the lives of people and environments in which they live and work.

We're practically focused – from nursing, psychology and sports science to construction, robotics and business process; our research creates new knowledge with practical applications. We help to find solutions to global issues and give you the edge you need to hit the ground running when you start your career.

Find out more at www.lsbu.ac.uk/research



LIFE IN LONDON





It's the world's most dynamic capital city. Being a student in London is a special experience; that's why it's been named the best city for students by QS higher education.

London is a thriving, multi-ethnic and multilingual environment and we're at the centre of it - Zone 1. As the UK's hub for law, fashion, finance, the arts and technology, whatever your interest, there's opportunities here.

LSBU's excellent transport links makes us a minutes walk to the Underground and a short bus ride from some of the best places in the city, including Covent Garden, Tate Modern and the British Film Institute. Not only that, but we are minutes away from some of the most exciting cultural centres in the city like the South Bank, Borough Market and Bermondsey Street.



ELEPHANT & CASTLE

LSBU's Southwark campus is in Elephant & Castle, an important junction since Roman times, and the home of LSBU since 1892. Elephant & Castle is without a doubt one of the most up-and-coming areas in London; there's so much to see and do within a short walk of the campus. Being here means you'll have sights, attractions and nightlife on your doorstep.

The Elephant & Castle, the pub that named the area, has been around in one form or another since 1765. It offers a great selection of food and drink, and runs fun events on a Friday and Saturday night. Mercato Metropolitano is an outdoor covered food hall that has everything from an in-house cinema, to craft beer, an urban farm and cooking classes. Looking for something more upbeat? Ministry of Sound is one of our noisiest neighbours, and the bars and clubs of Borough and London Bridge are just down the road. If history is more your scene, the Cinema Museum is a short walk away, as is the Imperial War Museum and its impressive grounds.

£3 billion has been invested into Elephant & Castle, including a £20 million new public leisure centre, 1693 affordable homes and 10,000 jobs, plus training and apprenticeships.

It's a unique place. Come and be part of it.



YOUR LIFE AT LSBU



We know that you can fulfil your potential and achieve success when you have the support you need. With teaching from professionals and specialists in their chosen fields as well as relevant, practical experience, we'll equip you for a successful career. Feeling like you belong matters too and the practical support you'll receive will help you to feel safe, settled and ready to study.

Be industry ready

Our academics maintain good connections with employers and our strong links with business mean our courses are always up to date with industry needs.

Many courses feature work placements, giving you the opportunity to apply your knowledge away from the lecture theatre. Most of our courses are accredited by professional bodies too, giving you an edge with future employers.

Award winning student support

Our Student Life Centre is here to make your experience as easy as possible. Many factors can have an impact on students' success, which is why we do everything we can to make sure you get the support you need. We were even awarded 'Outstanding Student Services Team' at the 2018 Times Higher Education awards (THELMAs).

Whether it's a question about funding, checking arrangements for an upcoming exam, securing a placement, or finding someone to talk to, our dedicated Student Life Centre is a welcoming hub offering a range of services to support your educational, personal and employment needs.

If you have a disability we can give you the advice and support you need as well as arranging necessary adjustments to ensure there are no barriers to your learning.

Our expert Skills for Learning tutors offer an extensive range of workshops, assignment surgeries, drop-ins and one-to-one sessions designed for all levels of study.



Set up for success

At LSBU, we want to set you up for a successful career. The JobShop has an online board where you can see a wide range of part-time, full-time or voluntary placements. You can also drop in to see our JobShop advisers, who are always available to help you take the next step in your search. There's no need to book.

Or why not take advantage of the Careers Gym? We offer group workshops on CVs, interview techniques and finding work experience, as well as regular presentations from employers across a range of sectors.

A home away from home

Living away from home for the first time can be a big deal. LSBU has four halls of residence, all in the heart of central London and within a 10-minute walk of our Southwark campus.

You can rent from LSBU and you'll deal directly with the University, not third-party providers. That means we can guarantee you options to suit all budgets, with clear tenancy agreements and all-inclusive rents that include insurance for your personal belongings, internet access in each bedroom and on-site laundry facilities.

#teamLSBU

At LSBU, we're proud of our students' sport success stories. Whether you choose to join one of our many sports clubs, gain a vocational qualification or improve your employability through volunteering and coaching in the community, the Academy of Sport is here for you.

As a first-year, you'll benefit from discounted membership for the duration of your time here.

STUDENTS' UNION

London South Bank Students' Union (LSBSU) is a charity, independent from the University, run by students, for students. You'll become a member for free when you enrol at LSBU.

Make Change

The Students' Union is here to represent LSBU students. We have over 700 part-time elected representatives, who are the driving force for change at LSBU, empowering students and ensuring their voices are heard. In the past, they have campaigned on issues such as the renovation of the Grads Cafe, keeping the cost of food on campus down and the reopening of the student bar.

Have Fun

Whilst studying is a key part of student life, so is having fun! The Students' Union puts on weekly and one-off events throughout the year, for students to relax and socialise. From a weekly pub quiz to special club nights, film screenings to mature students' mixers – there's something for everyone.



Great Advice

The advice service gives free, independent advice about a range of issues that affect students and if specialist help is needed, we can signpost you to the most appropriate service. Find out more at www.LSBSU.org/advice

Get Involved

We have loads of activities for you to get involved with, including over 70 societies geared towards students with common interests to meet up and do what they love. These range from academic pursuits, to politics and faith groups. Find out more at www.LSBSU.org/societies

Into sports? LSBSU runs over 20 different sports clubs, competing nationally in British Universities & Colleges Sport (BUCS) leagues and Varsity, a one-day competition with other London universities. Find out more at www.LSBSU.org/sports

If you can't find something you're interested in, you can start a sports club or society. Get thinking about what you want to get involved in!

ACADEMIC SCHOOLS

Our Schools support their students, undertake world-leading research and remain heavily engaged with their respective industries.

The School of Applied Sciences

From psychology to food science, to forensic science and sports, our teaching combines academia with fantastic opportunities to apply your learning to working scenarios. We organise work placements, talks and seminars with leading scientific organisations, giving you invaluable experience to boost your employability.

The School of Arts and Creative Industries

Our courses bridge the gap between creativity and enterprise. You'll gain industry capability as well as developing your individual creativity, so you'll leave ready to thrive in the sector. We'll help you fulfil your creative potential with a portfolio full of creative work. Our lecturers are leading practitioners in their field, and with over 220 industry partners, you'll actively engage with the creative sector from the start of your studies, via placements and freelance work.

The School of The Built Environment and Architecture

As project managers, structural engineers, quantity surveyors and architects, LSBU graduates are significant players in the built environment industry. Most of our courses are accredited by professional bodies and are developed in collaboration with industry professionals. With world-leading research, outstanding teaching and consistently relevant courses, we'll equip you with the skills, knowledge and experience you need to succeed.



The School of Business

Our focus is on enterprise. Our distinctive approach to teaching and learning is designed to prepare you for the world of work. We're flexible too – you can change between specialisms to find the area that best suits your interests. You'll become a resilient, adaptable and focused graduate, capable of turning your ambition into reality and you'll be empowered for future success.

The School of Engineering

We have been educating professional engineers for more than 100 years. You'll benefit from our amazing facilities, cutting edge research and, importantly, accredited courses and expert input. Our courses are contributed to by leading sector companies, such as Schlumberger, TFL and McLaren Automotive. You can work and study too – over 1,000 cross-sector partners sponsor their employees to study at LSBU.

The School of Health and Social Care

We're committed to educating professionals who meet the contemporary needs of the healthcare sector. We work with over 60 NHS partner organisations across London and the South East, so you'll have the opportunity to enjoy first-class placements. You'll graduate with the courage to lead and the confidence to challenge.

The School of Law and Social Sciences

Our courses cover a wide range of urgent social issues, all underpinned by the School's core commitment to social justice and global responsibility. As part of our learning community, you can make a real difference by sharing ideas, campaigning, researching, volunteering and shaping policy. You'll become an informed, engaged global citizen, ready to progress into a prosperous career.

WITH OVER 150 COURSES YOUR FUTURE STARTS HERE!

28	Accounting, Finance and Economics
30	Architecture
32	Biological and Forensic Science
34	Business and Enterprise
38	Chemical Engineering and Petroleum Engineering
40	Chiropractic
42	Civil and Building Services Engineering
46	Computer Science and Informatics
50	Construction, Property and Surveying
54	Criminology
56	Education
58	Electrical and Electronic Engineering
62	Fashion and Advertising
64	Film and Photography
66	Food, Bakery and Nutrition
70	Games, Music and Sound Design
72	History
74	Journalism
76	Human Geography
78	Law
80	Marketing
82	Mechanical Engineering and Design
86	Nursing and Midwifery
90	Occupational Therapy
92	Operating Department Practice
94	Physiotherapy
96	Politics and International Relations
98	Psychology
100	Radiography
102	Social Work
104	Sociology
106	Sport
110	Theatre and Performance
112	Tourism and Hospitality

ACCOUNTING, FINANCE AND ECONOMICS

Our top-ranked courses are flexible, allowing you to choose from a wide range of modules and focus on what interests you most.

Covering the core areas of accounting, finance, banking, economics and governance, and with links to and accreditations from various professional bodies, our courses enhance employability and career development. We'll give you opportunities to get real-world experience through national and international competitions and graduate start-up and entrepreneur schemes.

Employability and industry links

With employability embedded in every module, work placement options, coaching programmes and mentoring schemes, our focus is on developing you to be a rounded, highly employable graduate. Recent graduates have secured positions in accounting firms, industry, banking, finance and commerce. Graduates will also be fast tracked to becoming ACCA qualified, with exemptions from certain exams.

Accreditations

Employers actively seek graduates holding accredited degrees, and it can help to make you stand out from the crowd once you graduate. Being accredited also means that our degrees are industry relevant and developed with leading professional bodies.

Many of our courses are accredited by the following world-leading professional bodies:

- IOEE - The Institute of Enterprise and Entrepreneurs
- ACCA - The largest global body for professional accountants

No.2

amongst London competitors for overall satisfaction in Economics.
National Student Survey 2018

No.7

in the UK overall for Accounting and Finance.
Guardian League Table 2019



LSBU School of Business picked up the award for Accountancy College of the Year - Public Sector at the PQ Magazine 2017 and 2018 awards.

Course	Duration	Entry	Typical Offer*
BA (Hons) Accounting and Finance UCAS Code N420	Full-time: 3 years Full-time (Sandwich): 4 years	September and January	A Level BBB or BTEC National Extended Diploma DDM
BSc (Hons) Economics UCAS Code L100	Full-time: 3 years Full-time (Sandwich): 4 years	September and January	A Level BCC or BTEC National Extended Diploma DMM
BSc (Hons) Economics with Accounting UCAS Code LN14	Full-time: 3 years Full-time (Sandwich): 4 years	September and January	A Level BCC or BTEC National Extended Diploma DMM
BSc (Hons) Economics with Finance UCAS Code LN13	Full-time: 3 years Full-time (Sandwich): 4 years	September and January	A Level BCC or BTEC National Extended Diploma DMM

Full-time: Apply through UCAS | Institution code: L75

***For full Entry Requirements see lsbu.ac.uk**



ARCHITECTURE

Our graduate architects are creative, reflective and highly capable of addressing the challenges of contemporary design.

With project-led work being at the heart of our teaching, we embrace a studio-centred culture. Over 50% of the course is taught as design studio projects, with supporting lectures in the cultural context of architecture, structures and construction, and relevant digital and professional skills.

As well as learning to draw by hand, you'll use an array of digital media. History and theory modules will develop your understanding of the subject of architecture, while technology modules will teach you about structures.

Choose to study architecture and you'll gain more varied skills and a higher employability than almost any other professional subject.

Accreditations

- Validated by Royal Institute of British Architects (RIBA)
- Prescribed by Architects Registration Board (ARB)

First

UK university to offer Level 6 (BA Hons, Degree equivalent) apprenticeships in Architecture.

Top 3

amongst London competitors for graduate prospects in Architecture. *The Times and Sunday Times Good University Guide 2019*

Employability and industry links

Our architecture graduates go on to enjoy considerable success, with previous graduates winning Royal Institute of British Architects (RIBA) prizes and commendations, as well as having their work exhibited at the Royal Academy summer show. Former students are now working for top practices including AHR, Allies and Morrison, Foster+Partners, Grimshaw, Niall McLaughlin Architects, Populous, Wilkinson Eyre, and Zaha Hadid Architects.

Facilities

- The Architecture Design Studios: two entire floors dedicated to architecture design studio spaces, including projectors, interactive boards and 4K display screens.
- The Digital Fabrication Facilities: integrated with the design studio, solely for our Architecture courses. The facilities include: 3D printing, laser cutting, robot arm, 3D scanning, plotter printing, photographic space and video editing suite.
- The Digital Architecture and Robotics Lab: houses a Multifunction Robotic Platform for various architectural applications including milling, hot wire cutting, mechanical and vacuum grippers.
- Architectural applications: an Oculus Rift 3D virtual reality headset, 3D scanner and 3D printer.
- The Building Information Modelling (BIM) Centre: a hub for innovation, professional training and networking amongst practice experts in the built environment sector.

Course	Duration	Entry	Typical Offer*
BA (Hons) Architecture CAS Code K100	Full-time: 3 years Part-time: 5 years	September	A Level BBC or BTEC National Extended Diploma DDM
BA (Hons) Architecture (Architectural Assistant Apprenticeship)	Part-time (+ EPA): 4 years	September	A Level BBC or BTEC National Extended Diploma DDM (must include an art or design subject). Confirmation of employment offer in architect's practice registered as hosting L6 apprentices.

Full-time: Apply through UCAS | Part-time: Apply direct to LSBU | Institution code: L75

*For full Entry Requirements see lsbu.ac.uk



BIOLOGICAL AND FORENSIC SCIENCE

Biological Sciences

Taught by academics with a wealth of research and experience, we ensure that you develop the fundamental knowledge of scientific processes and procedures, current scientific research and innovation, and up-to-the-minute laboratory techniques alongside your chosen specialism.

Employability and industry links

Our Bioscience and Nutrition courses prepare you for a career in fields such as health and wellbeing and pharmaceuticals. You will also have the option to take a year placement in industry.

Facilities

The University has recently invested £1 million in specialist science laboratories, providing state of the art teaching facilities to enhance your practical experience.

Accreditations

- The Association for Nutrition

No.1

for research quality in Biological Sciences amongst London Modern competitors.
Sunday Times League Table 2019

Top 5

for student satisfaction for Forensic Science amongst London Modern competitors.
Complete University Guide 2018

Forensic Science

From research in chemical analysis and DNA recovery to working at forensic science organisations, our course is taught by academics who are researchers and practitioners. You'll learn in forensic science labs with specialist equipment, meaning you gain the skills you need to pursue your career.

Employability and industry links

We prepare you for a career in fields which involve complex scientific investigations, evidence evaluation and teaching science. The Chartered Society of Forensic Sciences accredits the course and we work closely with various organisations involved in forensics analysis.

Facilities

Our forensic laboratories feature the latest analytical equipment, including electron microscopy and inductively-coupled plasma spectrometry - ICPMS. Students can also carry out detailed DNA testing – the strong links we have with the London Fire Brigade provide analysis opportunities in many real-world situations.

You will have the opportunity to develop practical skills on campus in managing crime scenes and gathering evidence in our specially designed crime scene flat.

Accreditations

- The Chartered Society of Forensic Sciences

Course	Duration	Entry	Typical Offer*
BSc (Hons) Bioscience UCAS Code C110	Full-time: 3 years Full-time (Sandwich): 4 years	September	A Level CCD (2 Science A Levels) or BTEC National Extended Diploma MMM
BSc (Hons) Forensic Science UCAS Code F410	Full-time: 3 years	September	A Level CCD (2 Science A Levels) or BTEC National Extended Diploma MMM (with 33% science at level 3)
BSc (Hons) Human Nutrition UCAS Code B401	Full-time: 3 years Full-time (Sandwich): 4 years	September	A Level CCD (2 Science A Levels) or BTEC National Extended Diploma MMM

Full-time: Apply through UCAS | Institution code: L75

***For full Entry Requirements see lsbu.ac.uk**



BUSINESS AND ENTERPRISE

Our range of courses are focused on how organisations and management function in an ever-changing business environment.

In Business Management, you can tailor your course to your interests by combining areas including Accounting, Finance, Marketing, HR, Enterprise & Entrepreneurship or Project Management through one of our joint degrees.

Our interactive courses give you a lot of opportunity to get real-world experience, many with national and international competitions, as well as graduate start-up and entrepreneur schemes. This includes:

- The opportunity to become a student member of the Institute of Directors to network with today's business leaders.
- The opportunity to work in paid employment in the Business Solutions Centre giving consultancy advice to the local business community.
- Working with the tenant community within the Business Solution Centre, you have access to developing businesses, who act as live case studies, helping to bring the business world into the classroom.

Employability and industry links

At the heart of the commercial capital, our industry partners are UK leaders in the digital revolution, social regeneration, and health and social care environments. To help you prepare for the exciting opportunities this brings, we have a dedicated employability team to help develop your skills to be "work ready" and a curriculum that gives you access to a wide variety of careers and industry sectors in all types of commercial roles.

Accreditations

- IOEE - The Institute of Enterprise and Entrepreneurs
- CIMA - The Chartered Institute of Management Accountants
- ACCA - The Association of Chartered Certified Accountants
- CMI - The Chartered Management Institute

No.2

in London for satisfaction with courses in Business, Management and Marketing. *Guardian League Table 2019*

1st

for graduate prospects amongst London Modern competitors in Business Studies. *Sunday Times League Table 2019*

"If you're looking for an institution that offers everything you need to become what you want to be, then LSBU is unquestionably the right place."

Antonio Mallaci Bocchio,
BSc (Hons) Economics with Finance

DEVELOPING THE WHOLE STUDENT

In the School of Business, we support you to embark on a successful and fulfilling career, encouraging you to define your goals from the moment you arrive. We provide you with specialist coaching, mentoring and careers support that is embedded into the curriculum, as well as a rich programme of extracurricular activities designed to refine your skills. These include language courses, a leadership club and book club, careers workshops, consulting case competitions and a collaboration with the Institute of Directors. We have a dedicated Careers Team, specifically for students in the School of Business. Our aim? To help you become a well-rounded graduate with excellent career prospects.

Because our courses are designed with employer input, everything you learn will help you to hit the ground running in the world of work. This includes a focus on digital technology and leadership, as well as business case-based modules and assessments. All of our degrees include the option to take a sandwich placement or study abroad, giving a fantastic start to your career portfolio.

You will expand your professional network with regular opportunities to meet employers and industry professionals through skills sessions and events. In our state-of-the-art new building you will be working alongside entrepreneurs. Based in the heart of London, our industry partners are UK leaders in their field. They range from public sector organisations like the NHS and Bank of England to large multinationals and local SMEs and start-ups.

Course	Duration	Entry	Typical Offer*
BA (Hons) Business Management UCAS Code NL21	Full-time: 3 years Full-time (Sandwich): 4 years Part-time: 4 years**	September and January	A Level BCC or BTEC National Extended Diploma DMM
BA (Hons) Business Management with Accounting UCAS Code NN24	Full-time: 3 years Full-time (Sandwich): 4 years	September and January	A Level BCC or BTEC National Extended Diploma DMM
BA (Hons) Business Management with Business Practice (Apprenticeship)	Full-time: 3 years Full-time (Sandwich): 4 years	September and January	A Level BCC or BTEC National Extended Diploma DMM
BA (Hons) Business Management with Economics UCAS Code NL21	Full-time: 3 years Full-time (Sandwich): 4 years	September and January	A Level BCC or BTEC National Extended Diploma DMM
BA (Hons) Business Management with Enterprise and Entrepreneurship UCAS Code NL21	Full-time: 3 years Full-time (Sandwich): 4 years	September and January	A Level BCC or BTEC National Extended Diploma DMM
BA (Hons) Business Management with Finance UCAS Code NL23	Full-time: 3 years Full-time (Sandwich): 4 years	September and January	A Level BCC or BTEC National Extended Diploma DMM
BA (Hons) Business Management with HR UCAS Code NL26	Full-time: 3 years Full-time (Sandwich): 4 years	September and January	A Level BCC or BTEC National Extended Diploma DMM
BA (Hons) Business Management with Law UCAS Code NM21	Full-time: 3 years Full-time (Sandwich): 4 years	September and January	A Level BCC or BTEC National Extended Diploma DMM
BA (Hons) Business Management with Marketing UCAS Code NN25	Full-time: 3 years Full-time (Sandwich): 4 years	September and January	A Level BCC or BTEC National Extended Diploma DMM

Course	Duration	Entry	Typical Offer*
BA (Hons) Business Management with Project Management UCAS Code N213	Full-time: 3 years Full-time (Sandwich): 4 years	September and January	A Level BCC or BTEC National Extended Diploma DMM
BA (Hons) International Business Management (top up) UCAS Code N202	Full-time: 1 year Part-time: 2 years**	September and January	A Level BCC or BTEC National Extended Diploma DMM
BSc (Hons) Health and Social Care [†] UCAS Code L510	Full-time: 3 years Part-time: 5 years	September	A Level CCC or BTEC National Extended Diploma MMM

Full-time: Apply through UCAS | Part-time: Apply direct to LSBU | Institution code: L75

***For full Entry Requirements see lsbu.ac.uk**

**Part-time September start only

[†]Run by the School of Health and Social Care



CHEMICAL ENGINEERING AND PETROLEUM ENGINEERING

Engineers are firmly focused on meeting the challenges of tomorrow. They use creative thinking and applied technical knowledge to employ the earth's resources as efficiently as possible. Our industry-recognised and professionally accredited courses will provide you with the theoretical principles to solve real-world engineering problems.

Chemical engineers find themselves working across industries from pharmaceuticals to agri-chemicals, or in the water industry to traditional chemical plants. Petroleum engineers find employment in the extraction of fossil fuels and geothermal energy.

Employability and industry links

Chemical engineering graduates are employed in a wide array of traditional industries such as the refining and processing of chemicals for energy, and lately in green chemistry where natural resources are managed to minimise environmental impacts. Many are employed in high growth sectors such as healthcare, water and waste management, pharmaceutical and food industries and power generating facilities.

Petroleum engineering graduates are typically employed by oil and gas companies to work in the areas of geoscience, drilling engineering, reservoir engineering and simulation, and oilfield management.

Facilities

Our mix of multi-purpose and specialist laboratories provide ample space and facilities for carrying out a wide range of chemical tests. These practical facilities allow our students to mimic the processes undertaken by engineers in industry: from researching and testing new products through to considering how to make them commercially viable, how they could be implemented on an industrial scale and modified and improved once they are in operation. Our research laboratories have seen a £200,000 refurbishment, with a focus on new green and sustainable chemical processes for future research. This will support the current laboratories that all our students can access for project work and supported learning.

Accreditations

- Institution of Chemical Engineers
- The Energy Institute

Top 10

in the UK for student satisfaction in Chemical Engineering.
Complete University Guide 2019

Top 10

in the UK for career prospects in Chemical Engineering.
Guardian League Table 2019



Get access to industry level £1 million software suite sponsored by leading suppliers.

Course	Duration	Entry	Typical Offer*
BEng (Hons) Chemical and Process Engineering UCAS Code H801	Full-time: 3 years Full-time (Sandwich): 4 years	September	A Level BBB (with a B in Maths or Physics) or BTEC National Extended Diploma DDM
BEng (Hons) Petroleum Engineering UCAS Code H850	Full-time: 3 years Full-time (Sandwich): 4 years	September	A Level BBB (with a B in Maths or Physics) or BTEC National Extended Diploma DDM
MEng (Hons) Petroleum Engineering UCAS Code H855	Full-time: 4 years Full-time (Sandwich): 5 years	September	A Level ABB (with a B in Maths or Physics) or BTEC National Extended Diploma DDM
MEng (Hons) Chemical and Process Engineering UCAS Code H804	Full-time: 4 years Full-time (Sandwich): 5 years	September	A Level BBB (with a B in Maths or Physics) or BTEC National Extended Diploma DDM
HND Chemical Engineering UCAS Code 008H	Full-time: 2 years	September	A Level DDD or BTEC National Extended Diploma MMP

Full-time: Apply through UCAS | Institution code: L75

*For full Entry Requirements see lsbu.ac.uk



CHIROPRACTIC

Chiropractors are healthcare professionals concerned with the diagnostic treatment and prevention of mechanical disorders of the musculoskeletal system. As well as developing your diagnostic, clinical and research skills, you'll undertake annual clinical placements, giving you the chance to put theory into practice.

There's a significant and growing demand for chiropractic services in and across London, making our central location even more appealing.

1st

for overall score amongst London Modern competitors for Health Professions.
Guardian League Table 2019

1st

for satisfaction with assessment amongst London Modern competitors for Health Professions.
Guardian League Table 2019

Course	Duration	Entry	Typical Offer*
M(Chiro) Chiropractic Integrated Masters UCAS Code B320	Full-time: 4 years	September	A Level ABB (2 Science A Levels) or BTEC National Extended Diploma DDD (Science)

Full-time: Apply through UCAS | Institution code: L75
***For full Entry Requirements see lsbu.ac.uk**

Employability and industry links

By the time you graduate, you'll have become a competent and confident lifelong learner, committed to clinical excellence and patient care, and will be fully equipped for a successful, rewarding career.

As a graduate, you'll be able to register with the General Chiropractic Council, enabling you to practice across the UK. An increasing number of chiropractors are also being contracted to deliver services to NHS patients through Any Qualified Provider schemes.

Accreditations

- The General Chiropractic Council

Facilities

Our dedicated facilities allow practical simulation and skills training in clinical laboratories.



CIVIL AND BUILDING SERVICES ENGINEERING

From the rebuilding of inner cities to remarkable constructions like the Channel Tunnel, the world is full of building and infrastructure projects that happen because of civil and building services engineers.

At LSBU, we deliver professionally accredited construction, infrastructure, maintenance and sustainability courses as well as outstanding applied research. Knowledge gained in our courses have practical applications in global industry including building structures, transportation and sanitation.

Employability and industry links

Specialising in civil and building services engineering allows engineers to utilise their talents in careers that develop complex systems, products and processes to solve useful and practical real-world problems. The focus is very much kept on customer needs throughout the life cycle of design, testing, manufacturing, installation, operation, monitoring and future planning.

Several key players in the construction industry sit on our industrial advisory board. This includes HOARE LEA consulting engineers and Buro Happold Engineering. These industry links bring great work placement and graduate engineer opportunities for our students.



Awarded the prestigious Happold Brilliant Award for the second time in 2014. The award is a well-known hallmark of quality, and recognises excellence in teaching building services engineering in universities across the world.

Accreditations

- Joint Board of Moderators (JBM) on behalf of the Engineering Council as meeting the requirements for Further Learning for registration as a Chartered Engineer; the JBM comprises:
 - Institution of Civil Engineers
 - Institution of Structural Engineers
 - Chartered Institution of Highways and Transportation
 - Institute of Highway Engineers
- Building services engineering courses are accredited by the Chartered Institution of Building Services Engineers (CIBSE) and the Energy Institute.

Facilities

LSBU students have many opportunities to develop their skills in state of the art facilities. You'll have access to our advanced workshop, specialist £2.8 million Sustainability Centre, acoustic laboratory, digital robotics lab and Building Information Modelling Centre plus much more.

Our facilities for materials research are extensive and include sophisticated equipment for growing engineering coatings and functional thin films for devices such as solar cells. We also have the only anechoic chamber in London, of a size complying with British standards, and two audiometric booths.



Top 10

in the UK for both student satisfaction and research intensity in Civil Engineering. *Complete University Guide 2019*

70+ years

We have been running courses for the Building Services Engineering industry since 1947.

Course	Duration	Entry	Typical Offer*
HNC Building Services Engineering (Building Services Engineering Technician Apprenticeship)	Part-time: 2 years (+ EPA)	September	A Level EEE or BTEC National Extended Diploma MPP
HND Building Services Engineering UCAS Code 042K	Full-time: 2 years Part-time: 3 years	September	A Level EEE or BTEC National Extended Diploma MPP
BEng (Hons) Building Services Engineering UCAS Code K2J9	Full-time: 3 years Full-time (Sandwich): 4 years Part-time: 4.5 years Part-time (year 2 entry): 3.5 years	September	A Level BBC or BTEC National Extended Diploma DDM. Level 3 qualifications must include Maths and Science.
BEng (Hons) Building Services Engineering (Building Services Engineering Site Management Apprenticeship)	Part-time: 3.5 years (+ EPA)	September	HNC with three merits including Mathematics at Level 4. There might be a diagnostic test of Mathematics at Level 4.
BEng (Hons) Building Services Engineering (TAC Design Apprenticeship)	Part-time: 4.5 years (+ EPA)	September	A Level BBC or BTEC National Extended Diploma DDM
HNC Civil Engineering	Part-time: 2 years	September	A Level EEE or BTEC National Extended Diploma MPP



Of the past 20 presidents of the Chartered Institution of Building Services Engineers, 13 have been LSBU alumni.

Course	Duration	Entry	Typical Offer*
HNC Civil Engineering (Construction Site Engineering Technician Apprenticeship)	Part-time: 2 years (+ EPA)	September	A Level EEE or BTEC National Extended Diploma MPP
BEng (Hons) Civil Engineering UCAS Code H200	Full-time: 3 years Full-time (Sandwich): 4 years Part-time: 5 years Part-time (with an approved HNC or equivalent): 3 years	September	A Level BBC or BTEC National Extended Diploma DDM
BEng (Hons) Civil Engineering (TAC Design Apprenticeship)	Part-time: 5 years (+ EPA)	September	A Level BBC or BTEC National Extended Diploma DDM
BSc (Hons) Civil Engineering UCAS Code H201	Full-time: 3 years Full-time (Sandwich): 4 years Part-time (with an approved HNC or equivalent): 3 years	September	A Level CCD or BTEC National Extended Diploma MMM
BSc (Hons) Civil Engineering (Civil Engineering Site Management Apprenticeship)	Part-time: 3 years (+ EPA)	September	A Level CCD or BTEC National Extended Diploma MMM

Full-time: Apply through UCAS | Part-time: Apply direct to LSBU | Institution code: L75

***For full Entry Requirements see lsbu.ac.uk**

COMPUTER SCIENCE AND INFORMATICS

Businesses increasingly rely on computer science and informatics, and the speed with which computing technology continues to transform our daily lives is truly astonishing. We offer a variety of courses that ensure LSBU graduates are in demand all over the world, because their applied skills can revolutionise businesses and organisations of all kinds.

Accreditations

- The British Computer Society (BCS)

Top 10

in the UK for career prospects in Computer Science and Information Systems.
Guardian League Table 2019



Business ready:
combine system-development skills
with business-orientated knowledge.



Specialist labs and industry-standard software mean you get the practical digital skills that employers value.

Employability and industry links

Employers actively seek out our graduates in this area. They have secured enviable positions as data administrators, project coordinators, technical service coordinators, IT managers, IT Directors, IT systems team leaders, data scientists, business intelligence analysts, system analysts and software developers. They work in a variety of different industries, such as healthcare, retail, transport and finance.

We also offer Digital Solutions apprenticeship programmes with a specialisation for an IT business analyst and consultant. By completing our apprenticeship route, you'll have the advantage of having real-world work experience, working in a role related to your area of study. This will give you a competitive edge among other graduates when you complete your degree.

Facilities

Students have access to specialist labs and industry-standard software. We have a variety of teaching labs with different layouts to suit different types of classes, and the workstations in our labs are all high performance.

Some of the software packages we have available for students to use include Microsoft SQL Server, Netbeans, Java Development Kit, Oracle, Python, SAS, Visual Paradigm, Packet Tracer, GSN-3, OpenStack and VMWare.



Course	Duration	Entry	Typical Offer*
BSc (Hons) Information Technology (Top up) UCAS Code G406	Full-time: 1 year	September	Successful record of relevant, recent study to a level broadly equivalent to years one and two of undergraduate study, which would be a HND in a relevant subject, with at least 3 merits in HND plus 2 others on merit.
BSc (Hons) Business Information Technology (top-up)	Full-time: 1 year	September	Successful record of relevant, recent study to a level broadly equivalent to years one and two of undergraduate study, which would be a HND in a relevant subject, with at least 3 merits in HND plus 2 others on merit.
BSc (Hons) Data Science (Top up)	Full-time: 1 year	September	Successful record of relevant, recent study to a level broadly equivalent to years one and two of undergraduate study, which would be a HND in a relevant subject, with at least 3 merits in HND plus 2 others on merit.
BSc (Hons) Applied Computing (Top up)	Full-time: 1 year	September	Successful record of relevant, recent study to a level broadly equivalent to years one and two of undergraduate study, which would be a HND in a relevant subject, with at least 3 merits in HND plus 2 others on merit.
BSc (Hons) Information Technology UCAS Code G406	Full-time: 3 Full-time (Sandwich): 4 years	September	A Level BCC or BTEC National Extended Diploma DMM
BSc (Hons) Computer Science UCAS Code G407	Full-time: 3 years Part-time: 4 years/6 years	September	A Level BBB or BTEC National Extended Diploma DDM

Course	Duration	Entry	Typical Offer*
BSc (Hons) Digital and Technology Solutions Professional (Business Analyst) (Apprenticeship)	Part-time: 4 years	September	A Level BCC or BTEC National Extended Diploma DMM
BSc (Hons) Digital and Technology Solutions Professional (Data Analyst) (Apprenticeship)	Part-time: 4/5 years	September	A Level BCC or BTEC National Extended Diploma DMM
BSc (Hons) Digital and Technology Solutions Professional (Cyber Security Analyst) (Apprenticeship)	Part-time: 4 years	September	A Level BCC or BTEC National Extended Diploma DMM
BSc (Hons) Digital and Technology Solutions Professional (IT Consultant) (Apprenticeship)	Part-time: 4 years	September	A Level BCC or BTEC National Extended Diploma DMM
BSc (Hons) Digital and Technology Solutions Professional (Network Engineer) (Apprenticeship)	Part-time: 4 years	September	A Level BCC or BTEC National Extended Diploma DMM
BSc (Hons) Digital and Technology Solutions Professional (Software Engineer) (Apprenticeship)	Part-time: 4 years	September	A Level BCC or BTEC National Extended Diploma DMM
BSc (Hons) Computing with Foundation Year UCAS Code G402	Full-time: 4 years	September	A Level EEE or BTEC National Extended Diploma DMM

Full-time: Apply through UCAS | Part-time: Apply direct to LSBU | Institution code: L75
***For full Entry Requirements see lsbu.ac.uk**

CONSTRUCTION, PROPERTY AND SURVEYING

Our long tradition of building education sees our graduates in high demand within the industry.

Much of this is down to our highly successful links within the industry, which enhance employment opportunities for our students. Taught by staff with a vast range of experience, and with opportunities to go on field trips, students benefit from a real-world perspective of their course.

As one of the first universities to offer degree apprenticeships in Building and Quantity Surveying, as well as in Housing, plus our full-time and part-time study options, we're confident that we're one of London's most flexible study providers.

Industry Links

- The Royal Institution of Chartered Surveyors (RICS)
- The Chartered Institute of Building
- National College for Heating Ventilation and Refrigeration Engineering
- Centre for Energy Studies

Accreditations

- RICS
- Royal Town Planning Institute (RPTI)
- Chartered Institute of Building
- Chartered Management Institute
- Association of Project Managers, APM and CIOB

No.1

London modern university for research intensity in Building.
Complete University Guide 2019

Employability

From The Shard to Battersea Power Station, taking in the regeneration of Elephant & Castle and Nine Elms plus much more, there are swathes of new developments across the UK and beyond which will require a large number of building professionals over the next decade. Our alumni hold key positions in their organisations.

Many LSBU graduates go into construction or specialist firms. Property students may find work as a valuer, property manager, advisor or within corporate professions. Our surveying graduates also work in a range of organisations including small and large private practices, local authorities, housing associations and property and construction companies.

Planning is an essential part of shaping our urban and rural areas. We place a strong emphasis on the practical skills that employers are looking for, so you'll be able to make the most of opportunities within local authorities, the private sector and government agencies.

Facilities

Construction, property and surveying students benefit from our state of the art facilities, which provide students with access to highly specialist equipment.

Our construction laboratory includes the only tensometer in London that measures material strength in very high detail. We also have the Building Information Modelling (BIM) Centre which is a hub for innovation, professional training and networking amongst practice experts in the built environment sector.

Harpreet Chahal

Alumnus, BSc (Hons) Architectural Technology

Studying Architectural Technology at LSBU was a valuable and gratifying experience for me. What I enjoyed most was the varied nature of the course modules, the 'real world' projects I got to work on with industry professionals and the endless work placement opportunities on offer.

Because LSBU has some great links with industry, I regularly got the opportunity to take part in some interesting projects. As part of the HEFCE* Project, I was one of forty lucky students taking part in the TeamBuild UK event. We were given The Passmore Project case study, which provided us with hands-on experience of the sector. Working with students from other disciplines, including architects, surveyors and construction managers, allowed me to gain further insight into how these areas work.

To top it off, my team won the TeamBuild Challenge. We were assessed on how well we worked together and how we overcame the challenges faced, including encouraging members of the team who were struggling with their presentation skills and confidence levels. After some guidance, they performed incredibly and as result we won the challenge and an Amazon Voucher!

Another unforgettable experience for me was completing my placement year in Hong Kong, where I was designing shopping centres in China and practising the Revit and AutoCAD skills learnt at university. Becoming independent, responsible and adapting to a foreign culture were just some of the things I took away from this experience.

*In November 2016, LSBU was awarded £50,000 through The Higher Education Funding Council for England (HEFCE) Catalyst Fund - to assess the requirements and academic impact of introducing collaborative multi-disciplinary working within the Higher Education sector.

Course	Duration	Entry	Typical Offer*
Extended Degree Programme in Built Environment UCAS Code F890	Full-time: 4 years Full-time (Sandwich): 5 years Part-time: 6 years	September	A Level EEE or BTEC National Extended Diploma MPP
BSc (Hons) Construction Management UCAS Code K252	Full-time: 3 years Full-time (Sandwich): 4 years Part-time: 5 years	September	A Level CCC or BTEC National Extended Diploma DMM
BSc (Hons) Commercial Management (Quantity Surveying) UCAS Code KN21	Full-time: 3 years Full-time (Sandwich): 4 years Part-time: 5 years	September	A Level CCC or BTEC National Extended Diploma DMM
BSc (Hons) Architectural Technology UCAS Code K235	Full-time: 3 years Full-time (Sandwich): 4 years Part-time: 5 years	September	A Level CCC or BTEC National Extended Diploma DMM
BSc (Hons) Architectural Engineering UCAS Code K236	Full-time: 3 years Full-time (Sandwich): 4 years Part-time: 5 years	September	A Level CCD or BTEC National Extended Diploma MMM
BSc (Hons) Real Estate UCAS Code N232	Full-time: 3 years Full-time (Sandwich): 4 years Part-time: 5 years	September	A Level ABB or BTEC National Extended Diploma DDD
HNC Construction UCAS Code O22K	Full-time: 1 Year Part-time: 2 years	September	A Level DDE or BTEC National Extended Diploma MPP
BSc (Hons) Building Surveying UCAS Code K230	Full-time: 3 years Full-time (Sandwich): 4 years Part-time: 5 years	September	A Level BBB or BTEC National Extended Diploma DDM
BSc (Hons) Quantity Surveying UCAS Code K240	Full-time: 3 years Full-time (Sandwich): 4 years Part-time: 5 years	September	A Level BBB or BTEC National Extended Diploma DDM
BSc (Hons) Building Surveying (Surveying Apprenticeship)	Part-time: 4/5 years (+ EPA)	September	A Level BBB or BTEC National Extended Diploma DDM

Course	Duration	Entry	Typical Offer*
BSc (Hons) Quantity Surveying (Surveying Apprenticeship)	Part-time: 4/5 years (+ EPA)	September	A Level BBB or BTEC National Extended Diploma DDM
BA (Hons) Housing Policy and Practice	Full-time: 3 years	September	A Level BCC or BTEC National Extended Diploma DMM
BA (Hons) Urban and Environmental Planning	Full-time: 3 years	September	A Level BCC or BTEC National Extended Diploma DMM

Full-time: Apply through UCAS | Part-time: Apply direct to LSBU | Institution code: L75

***For full Entry Requirements see lsbu.ac.uk**

No.1

in the UK for overall satisfaction in Planning.
National Student Survey 2018

1st

institution to offer RICS accredited programmes in the UK.



CRIMINOLOGY

What is crime? How are laws made and who avoids criminalisation? Our core school ethos of 'social justice and global responsibility' strongly underpins this subject area.

You'll gain a multi-dimensional understanding of crime and criminal justice policies rooted in the social, political and international context. You'll get a choice of specialised topics – including an optional work placement – that will support your career choices or further study.

Employability and industry links

Many graduates choose to work for the police or criminal justice services, where there are countless opportunities to help the community with plenty of room for specialisation. Other graduates have forged exciting careers in research, public relations, advertising, retail, management and media-related work. Careers options in teaching, social work, administration and higher-level education are also possible.

No.2

London University overall in Criminology.
Guardian League Table 2018

2nd

for graduate prospects amongst
London competitors.
Sunday Times League Table 2019

Course	Duration	Entry	Typical Offer*
BSc (Hons) Criminology UCAS Code M930	Full-time: 3 years	September	A Level BCC or BTEC National Extended Diploma DMM
BSc (Hons) Criminology with Law UCAS Code M9M1	Full-time: 3 years	September	A Level BCC or BTEC National Extended Diploma MMM
BSc (Hons) Criminology with Psychology UCAS Code M9C8	Full-time: 3 years	September	A Level BCC or BTEC National Extended Diploma MMM
BSc (Hons) Criminology with Journalism UCAS Code M9P5	Full-time: 3 years	September	A Level BCC or BTEC National Extended Diploma MMM

Full-time: Apply through UCAS | Institution code: L75

***For full Entry Requirements see lsbu.ac.uk**



EDUCATION

Our education programmes offer you the opportunity to develop your understanding of critical issues relevant to the UK and beyond.

Cultural, sociological and historical aspects of education systems are explored, including:

- How do people learn?
- What role does the learning environment play?
- What are the barriers to learning?

We've got extensive links with schools, alternative education settings and the creative industries as well as relevant organisations and researchers in the field.

Placement opportunities range from schools to alternative settings such as prisons, hospitals and theatres.

Employability and industry links

We'll set you up with a strong foundation for a career in teaching, giving you invaluable employment opportunities in educational or related settings. Graduates tend to take a PGCE or employment-based route into teaching, or to continue their studies on to Masters level and above.

Facilities

- Mock classrooms

Course	Duration	Entry	Typical Offer*
BA (Hons) Education Top-up UCAS Code X300	Full-time: 1 year work-based	September	FdA Foundation Degree in Education or HND or DipHE or equivalent Level 5 qualification
BA (Hons) Education Studies UCAS Code X301	Full-time: 3 years	September	A Level BCC or BTEC National Extended Diploma MMM
BA (Hons) Education Studies (Work Based) UCAS Code X302	Full-time: 3 years	September	A Level BCC or BTEC National Extended Diploma MMM

Full-time: Apply through UCAS | Institution code: L75

*For full Entry Requirements see lsbu.ac.uk

3rd

Ranked 3rd in London for Education.
Guardian League Table 2019

No.1

in London for career prospects in Education.
Guardian League Table 2019



ELECTRICAL AND ELECTRONIC ENGINEERING

Why electrical and electronic engineering? From smartphones to satellites and electric vehicles, electronics is an integral part of the modern world and at the forefront of our technological advances.

As an electrical and electronics engineer with complex problem-solving skills and a methodical mind and aptitude for maths, you will design, test and improve the performance of a myriad of systems, as well as developing new technologies for the future.

Accreditations

Our courses are recognised as excellent by the Institution of Engineering and Technology (IET) and our Electrical and Electronic Engineering course has enjoyed continuous accreditation by the IET for more than 35 years.

- Institution of Engineering and Technology

No.1

for student to staff ratio in Electronic and Electrical Engineering amongst London modern competitors. *Guardian League Table 2019*

No.1

London Modern university overall for Electronic and Electrical Engineering. *Guardian League Table 2018*



We have a panel of advisers from the industry to help ensure our course coverage is up to date and relevant to employment needs.

Employability and industry links

Electrical and Electronics Engineers can find themselves working in all kinds of environments and sectors. You might work in a production plant, a workshop, an office, a laboratory, a factory or on site with a client.

Electrical and Electronics Engineers tend to work in multi-disciplinary teams with engineers from other areas, as well as with architects, marketers, manufacturers, technicians and other professionals.

We are a leading university in the provision of Apprentice Degrees in the areas of Embedded Electronics Systems, Power Engineering and Rail Systems Engineering. We work closely with some of London's largest employers such as TfL and Network Rail to deliver these programmes.

Facilities

The practical approach we adopt means our students gain the essential knowledge and skills required to meet future demands for products and services. Students will have access to our laboratory spaces such as:

- Power, Machines and Drives Laboratory
- Control and Robotics laboratory
- Hardware and Software interfacing
- Analogue and Digital electronics
- Telecommunications and Networking
- Virtual Engineering Suite.

You'll also get to use industry standard software packages such as LabVIEW, MATLAB, AMTECH, ERACS, CISCO, C++ programming and Microsoft training courses.

Course	Duration	Entry	Typical Offer*
BEng (Hons) Computer Systems and Networks Engineering UCAS Code G650	Full-time: 3 years Full-time (Sandwich): 4 years Part-time: 4 years	September	A Level BBB or BTEC National Extended Diploma DDM
HND Electrical and Electronic Engineering UCAS Code 006H	Part-time: 2 years	September	A Level DDD or BTEC National Extended Diploma MMP
MEng (Hons) Electrical and Electronic Engineering UCAS Code H605	Full-time: 4 years Full-time (Sandwich): 5 years Part-time: 6 years	September	A Level AAB or BTEC National Extended Diploma DDD
MEng (Hons) Computer Systems and Networks Engineering UCAS Code H651	Full-time: 4 years Full-time (Sandwich): 5 years Part-time: 6 years	September	A Level AAB or BTEC National Extended Diploma DDD
MEng (Hons) Electrical Engineering and Power Electronics UCAS Code H631	Full-time: 4 years Full-time (Sandwich): 5 years Part-time: 6 years	September	A Level AAB or BTEC National Extended Diploma DDD
BEng (Hons) Computer Engineering UCAS Code GH63	Full-time: 3 years Full-time (Sandwich): 4 years Part-time: 4 years	September	A Level BBB or BTEC National Extended Diploma DDM
BEng (Hons) Electrical Engineering and Power Electronics UCAS Code H630	Full-time: 3 years Full-time (Sandwich): 4 years Part-time: 4 years	September	A Level BBB including Mathematics or BTEC National Extended Diploma DDM
MEng (Hons) Computer Engineering UCAS Code GH64	Full-time: 4 years Full-time (Sandwich): 5 years Part-time: 6 years	September	A Level AAB or BTEC National Extended Diploma DDD
BEng (Hons) Electrical and Electronic Engineering UCAS Code H600	Full-time: 3 years Full-time (Sandwich): 4 years Part-time: 4 years	September	A Level BBB or BTEC National Extended Diploma DDM
BEng (Hons) Electrical Engineering (Top Up) UCAS Code H603	Full-time: 1 year	September	Higher National Diploma with at least 60 credits at merit in second year modules, or other equivalent Higher Education qualification in a relevant area.

Course	Duration	Entry	Typical Offer*
BEng (Hons) Electronics and Communications Engineering (Top Up) UCAS Code H604	Full-time: 1 year	September	Higher National Diploma with at least 60 credits at merit in second year modules, or other equivalent Higher Education qualification in a relevant area.
HND Electrical and Electronic Engineering	Full-time: 2 years	September	A Level DDD or BTEC National Extended Diploma MMP
MEng (Hons) Power Engineering (Transmission and Distribution) UCAS Code H633	Full-time: 4 years Full-time (Sandwich): 5 years Part-time: 6 years	September	A Level AAB or BTEC National Extended Diploma DDD
BEng (Hons) Power Engineering (Transmission and Distribution) UCAS Code H632	Full-time: 3 years Full-time (Sandwich): 4 years Part-time: 4 years	September	A Level BBB or BTEC National Extended Diploma DDM
BEng (Hons) Power Engineering (Electrical) UCAS Code H634	Full-time: 3 years Full-time (Sandwich): 4 years Part-time: 4 years	September	A Level BBB or BTEC National Extended Diploma DDM
MEng (Hons) Power Engineering (Electrical) UCAS Code H635	Full-time: 4 years Full-time (Sandwich): 5 years Part-time: 6 years	September	A Level AAB or BTEC National Extended Diploma DDD
BEng (Hons) Rail Systems Engineering (Signalling and Control) UCAS Code H636	Full-time: 3 years Full-time (Sandwich): 4 years Part-time: 4 years	September	A Level BBB or BTEC National Extended Diploma DDM
MEng (Hons) Rail Systems Engineering (Signalling and Control)	Full-time: 4 years Full-time (Sandwich): 5 years Part-time: 6 years	September	A Level AAB or BTEC National Extended Diploma DDD
BEng (Hons) Rail Systems Engineering (Telecommunications and Networks Digital)	Full-time: 3 years Full-time (Sandwich): 4 years Part-time: 4 years	September	A Level BBB or BTEC National Extended Diploma DDM
MEng (Hons) Rail Systems Engineering (Telecommunications and Networks Digital)	Full-time: 4 years Full-time (Sandwich): 5 years Part-time: 6 years	September	A Level AAB or BTEC National Extended Diploma DDD

Course	Duration	Entry	Typical Offer*
BEng (Hons) Power Engineering (Transmission and Distribution) (Apprenticeship)	Part-time: 4 years	September	A Level BBB or BTEC National Extended Diploma DDM
MEng (Hons) Power Engineering (Transmission and Distribution) (Apprenticeship)	Part-time: 6 years	September	A Level AAB or BTEC National Extended Diploma DDD
BEng (Hons) Power Engineering (Electrical) (Apprenticeship)	Part-time: 4 years	September	A Level BBB or BTEC National Extended Diploma DDM
MEng (Hons) Power Engineering (Electrical) (Apprenticeship)	Part-time: 6 years	September	A Level AAB or BTEC National Extended Diploma DDD
BEng (Hons) Rail Systems Engineering (Signalling and Control) (Apprenticeship)	Part-time: 4 years	September	A Level BBB or BTEC National Extended Diploma DDM
MEng (Hons) Rail Systems Engineering (Signalling and Control) (Apprenticeship)	Part-time: 6 years	September	A Level AAB or BTEC National Extended Diploma DDD
BEng (Hons) Rail Systems Engineering (Telecommunications and Networks Digital) (Apprenticeship)	Part-time: 4 years	September	A Level BBB or BTEC National Extended Diploma DDM
MEng (Hons) Rail Systems Engineering (Telecommunications and Networks Digital) (Apprenticeship)	Part-time: 6 years	September	A Level AAB or BTEC National Extended Diploma DDD
MEng (Hons) Electrical and Electronic Engineering (Apprenticeship)	Part-time: 4 years	September	A Level AAB or BTEC National Extended Diploma DDD
BEng (Hons) Electrical and Electronic Engineering (Apprenticeship)	Part-time: 6 years	September	A Level BBB or BTEC National Extended Diploma DDM

Full-time: Apply through UCAS | Part-time: Apply direct to LSBU | Institution code: L75

*For full Entry Requirements see lsbu.ac.uk

FASHION AND ADVERTISING

Bringing together creative practice with marketing theory, our courses offer you the chance to explore your passion while developing the experience and entrepreneurialism needed for a career in fashion or advertising. Taught by experienced lecturers and practitioners in an agency style environment, you'll be in one of the world's most exciting cities, giving you access to fantastic creative venues such as Tate Modern, V&A Museum and Design Museum.

Top 5

in London for graduate prospects in Marketing.
Complete University Guide 2019

Employability and industry links

Our courses offer optional year-long work placements for Fashion and an optional placement module for Advertising, so you can gain invaluable experience. You'll also attend guest lectures by industry professionals, giving you an in-depth understanding of possible career routes. Marketing modules are accredited by the Chartered Institute of Marketing, ensuring what you learn meets industry standards.

Accreditations

Chartered Institute of Marketing (CIM)

Facilities

- Photography Studio
- Mac Lab

Course	Duration	Entry	Typical Offer*
BSc (Hons) Fashion Promotion with Marketing UCAS Code W2N5	Full-time: 3 years Full-time (Sandwich): 4 years	September	A Level BCC or BTEC National Extended Diploma MMM
BSc (Hons) Creative Advertising with Marketing UCAS Code N561	Full-time: 3 years	September	A Level BCC or BTEC National Extended Diploma MMM

Full-time: Apply through UCAS | Institution code: L75

*For full Entry Requirements see lsbu.ac.uk



FILM AND PHOTOGRAPHY

Whether you dream of being a filmmaker, exhibiting your photos or exploring world cinema, we offer you the chance to develop your expertise. On our film courses, you'll explore your interests through specialising in either Cinematography, Writing/Directing or Post-Production, combining theory with practice, and investigating topics ranging from the rise of cinema to contemporary British film. If your passion is photography, we provide you with the opportunity to collaborate on commercial, documentary and fine art projects, enhancing your technical abilities and creative intuition.

Accreditations

- ScreenSkills

No. 1

London Modern university for student satisfaction in Communication and Media Studies.

Complete University Guide 2019

Top 2

in London for academic support and student voice in Cinematics and Photography.

National Student Survey 2018

Top 3

for graduate prospects in London in Communication and Media Studies.

The Times and Sunday Times Good University Guide 2019

Employability and industry links

Our Film Practice course is accredited by the creative industry's professional body ScreenSkills, ensuring what you learn meets industry standards. The South Bank Collective, our student run creative agency, allows you to undertake paid photography and film work in an industry environment. Professionals give regular talks and masterclasses, helping you to gain an understanding of the sector and the careers available.

Facilities

Elephant Studios is an industry-ready media facility that ensures graduates have the best possible experience and employment outcomes.

The Film Studio and Soundstage is a double-height room with a lighting grid, DMX lighting control, green screen backdrop, air conditioning, green room (for make-up and wardrobe) and sound isolation for use as a soundstage. The Grading Suites have neutral wall colours and lighting to provide optimal conditions for the colourist. The premium suite (Grading Suite 1) includes a Dolby calibrated screen to ensure ideal conditions. The 36 seat cinema features a 4K projector and 5.1 sound playback, and is ideal to preview production work before it goes out to the public. The Photography Studio is a double-height space with a photography lighting grid, air conditioning, green room (for make-up and wardrobe) and two colourama separate systems with a range of backdrop options (including vinyl and paper).

Borough Road Gallery plays an important role with staff and students as a source of inspiration and a teaching and learning resource, including through co-developed events, curator-led lectures and classes, student commissions, and placements.

Ben Mallaby

Senior Lecturer, BA (Hons) Film Practice

Ben has a wealth of practice and teaching experience, not to mention a BAFTA nomination!

After graduating from a TV production MA and setting himself up as a freelancer, Ben decided to resume making short films to help raise his profile in the industry. Following some film festival success for his comedies, one of Ben's films was nominated for a Short Film BAFTA.

"My film got into enough festivals that I realised I was eligible to submit it for a BAFTA, so I submitted it on a whim, working everything out as I went – and I was nominated. It was a huge surprise, and very encouraging."

Around the time he started making shorts, Ben began teaching, first at the University of Gloucestershire and then Ravensbourne, before joining LSBU. Ben's work as a director, for clients such as Comedy Central, BBC3 and ITV2, and his short film success, have been vital in ensuring he is able to pass on the latest knowledge of industry practices. He also understands what it takes to make a career in the sector. Students benefit from Ben's connections within the film industry.

"As a director my work is regularly edited in post houses and it gives me the opportunity to keep abreast of what's happening in the sector. I've also been able to bring these collaborators in to speak to the students. It's fun for me as I get to learn about them in a way I wouldn't as their client or peer."

Course	Duration	Entry	Typical Offer*
BA (Hons) Film Practice UCAS Code W690	Full-time: 3 years	September	A Level BCC or BTEC National Extended Diploma MMM
BA (Hons) Film Studies UCAS Code W600	Full-time: 3 years	September	A Level BCC or BTEC National Extended Diploma MMM
BA (Hons) Photography UCAS Code W640	Full-time: 3 years	September	A Level BCC or BTEC National Extended Diploma MMM

Full-time: Apply through UCAS | Institution code: L75

*For full Entry Requirements see lsbu.ac.uk

FOOD, BAKERY AND NUTRITION

Whether it's learning in an environment that has 125 years of baking experience or investigating the relationship between diet and wellbeing, our bakery and nutrition courses offer you the chance to pursue your interests and develop skills in a practice-led environment. Taught by active researchers and practitioners, our courses are endorsed by industry bodies preparing you for a successful career in this sector.

Employability and industry links

We are linked to major organisations in the world of baking, including The British Society of Bakers and The Worshipful Company of Bakers, as well as food ingredient companies, flour millers, in-store bakers and SMEs. You'll build contacts and attend industry events, even having the opportunity to take a placement year, gaining you industry-based experience for future career success.

Accreditations

- The Association of Nutrition

Facilities

Three bakery rooms include multifunctional provers and retarders, deck ovens, a combination of spiral to planetary mixers, work benches and pastry brake. Our specialised chocolate room includes table-top tempering benches and specialised chocolate Selmi machines. We also have practical study rooms for activities such as the production of fermented goods, chocolate making, patisserie and confectionary. Our product development laboratories include a sensory evaluation suite and a compositional & analytical suite.

No.2

in London for research quality in Food Science.
Complete University Guide 2019

125 years

Celebrating 125 years, our bakery school is the oldest in the UK.



Course	Duration	Entry	Typical Offer*
BSc (Hons) Baking Science and Technology (Management) UCAS Code D635	Full-time: 3 years	September	A Level BCC or BTEC National Extended Diploma MMM
BSc (Hons) Baking Science and Technology (New Product Development) UCAS Code D641	Full-time: 3 years	September	A Level BCC or BTEC National Extended Diploma MMM
BSc (Hons) Baking Science and Technology (Nutrition) UCAS Code D692	Full-time: 3 years	September	A Level BCC or BTEC National Extended Diploma MMM
BSc (Hons) Baking Science and Technology (Science) UCAS Code D637	Full-time: 3 years	September	A Level BCC or BTEC National Extended Diploma MMM
FdSc Baking Science and Technology (Management) UCAS Code D634	Full-time: 2 years	September	A Level DEE or BTEC National Extended Diploma MPP
FdSc Baking Science and Technology (New Product Development) UCAS Code D640	Full-time: 2 years	September	A Level DEE or BTEC National Extended Diploma MPP
FdSc Baking Science and Technology (Nutrition) UCAS Code D690	Full-time: 2 years	September	A Level DEE or BTEC National Extended Diploma MPP

Course	Duration	Entry	Typical Offer*
FdSc Baking Science and Technology (Science) UCAS Code D363	Full-time: 2 years	September	A Level DEE or BTEC National Extended Diploma MPP
BSc (Hons) Baking Science and Technology (Management) (Top Up) UCAS Code D63K	Full-time: 1 year	September	Equivalent FdSc Foundation degree or sufficient industry experience
BSc (Hons) Baking Science and Technology (New Product Development) (Top Up) UCAS Code D642	Full-time: 1 year	September	Equivalent FdSc Foundation degree or sufficient industry experience
BSc (Hons) Baking Science and Technology (Nutrition) (Top Up) UCAS Code D691	Full-time: 1 year	September	Equivalent FdSc Foundation degree or sufficient industry experience
BSc (Hons) Baking Science and Technology (Science) (Top Up)	Full-time: 1 year	September	Equivalent FdSc Foundation degree or sufficient industry experience
BSc (Hons) Human Nutrition UCAS Code B401	Full-time: 3 years Full-time (Sandwich): 4 years	September	A Level CCB (2 Science A Levels) or BTEC National Extended Diploma MMM

Full-time: Apply through UCAS | Institution code: L75

***For full Entry Requirements see lsbu.ac.uk**

GAMES, MUSIC AND SOUND DESIGN

Whether you want to design a game or produce music, our courses offer you the chance to work on collaborative projects in dedicated studio spaces.

With a teaching team of experienced industry professionals, you'll combine theoretical knowledge with practical-based training, giving you the best of both worlds – industry insight and innovation.

Employability and industry links

With industry-approved standards across the creative technologies, including our partnership with The Independent Game Developers Association (TIGA), we have helped students gain placements at the likes of Ubisoft, Bethesda Softworks, BBC, Tate Britain and the National Theatre.

South Bank Sound Lab provides you with a platform to showcase and promote your work through public events and industry collaborations. You'll be able to gain Avid accreditation in Pro Tools as part of the course.

Facilities

Elephant Studios is an industry-ready media facility that ensures graduates have the best possible experience and employment outcomes.

The Game Design and Development modules are predominantly taught in a specialist Games Studio which features custom-built high-spec PCs and game consoles. Students have access to the Game Studio outside of teaching hours for playing games and working on game projects.

The Sound Studio features a control and live room, ideal for postproduction work, mixing and recording small bands. Both rooms are acoustically treated and isolated. Mixing console is an SSL AWS 924 Delat, with Dynaudio AIR and Genelec monitoring. Projects can be mixed from Stereo through to 5.1 / 7.1 / 9.1 and Atmos.

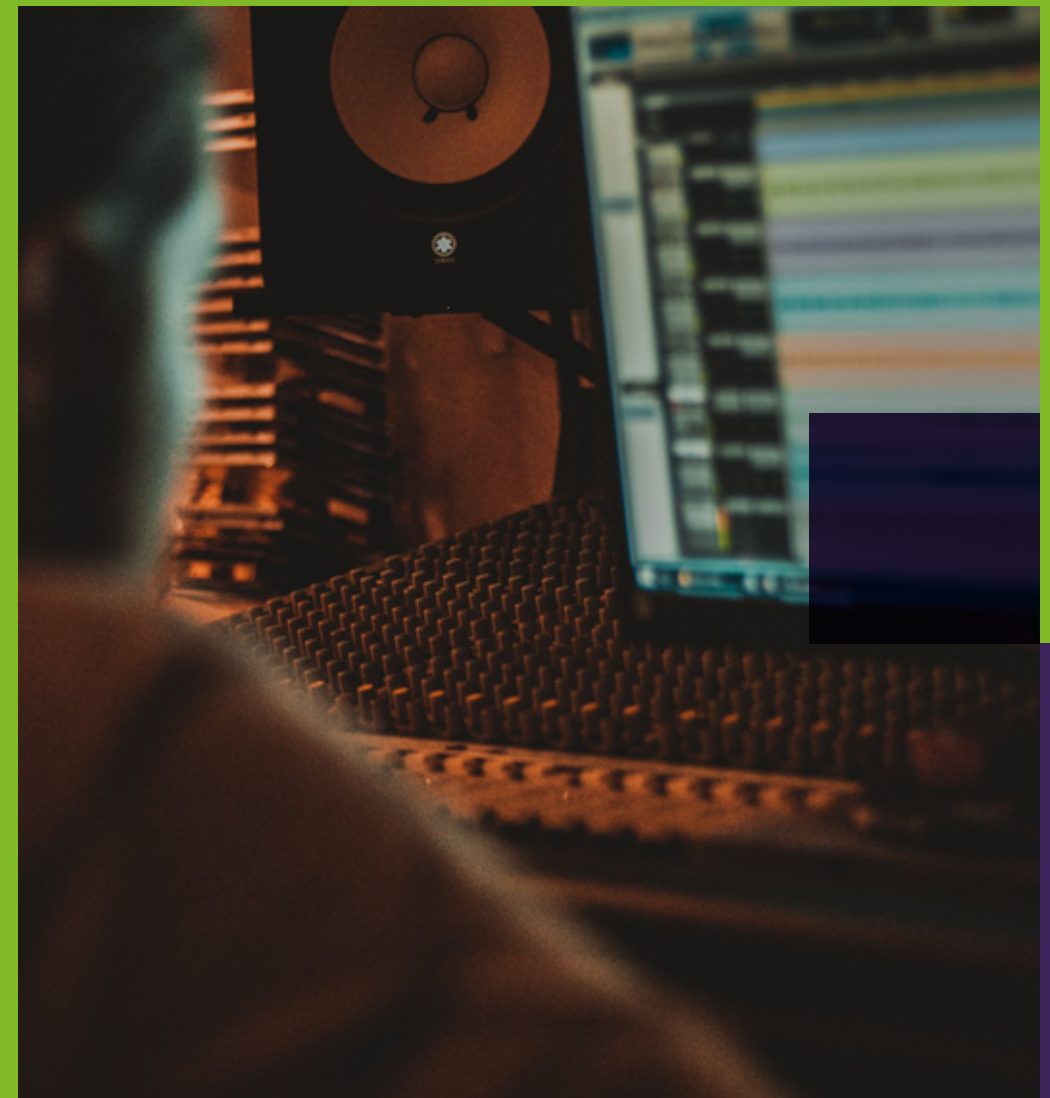
No.1

in London for academic support
and student voice in Music.
National Student Survey 2018

Course	Duration	Entry	Typical Offer*
BA/BSc (Hons) Game Design and Development UCAS Code G541	Full-time: 3 years	September	A Level BCC or BTEC National Extended Diploma MMM
BA/BSc (Hons) Music and Sound Design UCAS Code W390	Full-time: 3 years	September	A Level BCC or BTEC National Extended Diploma MMM

Full-time: Apply through UCAS | Institution code: L75

***For full Entry Requirements see lsbu.ac.uk**



HISTORY

Underpinned by a commitment to social justice and global responsibility, this degree can help you fulfil a career as a historically-informed and globally-engaged citizen.

Develop your interest in social, cultural and political history by focusing on themes of activism, how change happens and how historical events shape contemporary society. You'll consider diverse experiences of past lives, with a particular focus on gender, ethnicity and sexuality.

Our innovative teaching methods mean you're taught by internationally renowned historians who contribute to public policy debate and publish original research.

You'll benefit from inspiring speakers from public, private and third sector organisations.

Optional work placement opportunities allow you to tailor your degree to your interests and future career ambitions.

Employability and industry links

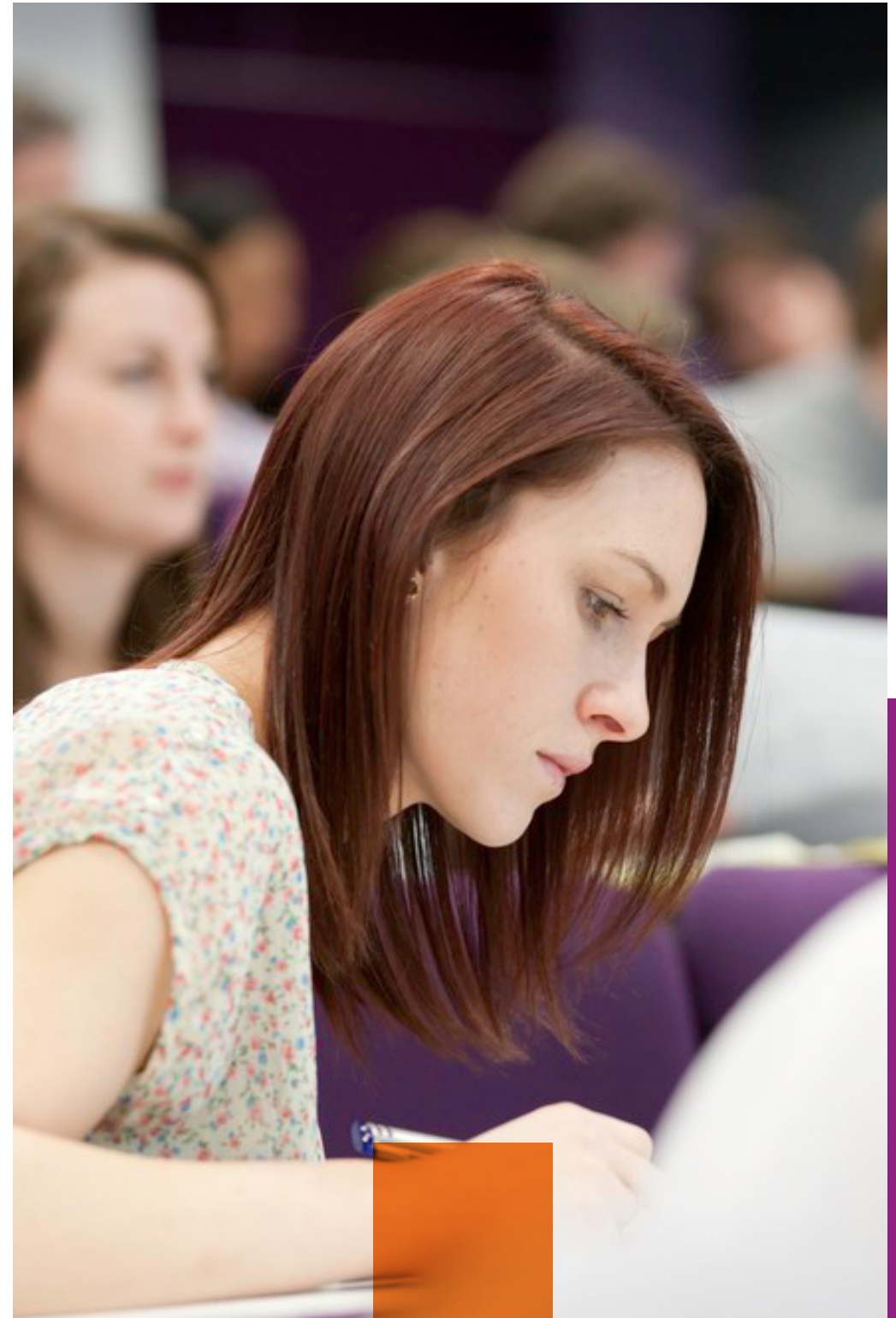
History graduates have the ability to apply an analytical mindset to all kinds of problems and situations. These are relevant in just about any industry which has a focus on current societies and future developments. Typical career paths include:

- teaching and research
- archives and heritage
- politics
- media
- business and commerce
- the charity sector
- marketing, advertising and PR
- law.

Course	Duration	Entry	Typical Offer*
BA (Hons) History UCAS Code V100	Full-time: 3 years	September	A Level BCC or BTEC National Extended Diploma DMM
BA (Hons) History with Politics UCAS Code V1L2	Full-time: 3 years	September	A Level BCC or BTEC National Extended Diploma DMM

Full-time: Apply through UCAS | Institution code: L75

*For full Entry Requirements see lsbu.ac.uk



JOURNALISM

Journalism is more than writing; photography, video making and sound engineering all play a major role in developing engaging multimedia content. You will experience what it's really like to work as a journalist by assisting in running a newsroom and creating content for our live platform, YouTube and radio station.

You will build the technical and critical skills essential for a career in the contemporary environment, including filming, recording and editing and also the ability to write clearly, concisely and, most importantly, factually. This mix of practice, theory and analysis will provide you with a full skillset, ready to confidently launch into your career.

Employability and industry links

With industry-approved standards across the creative technologies, including full accreditation from the Broadcast Journalism Training Council (BJTC) we have helped students gain placements at the likes of the BBC, Tate Britain and the National Theatre.

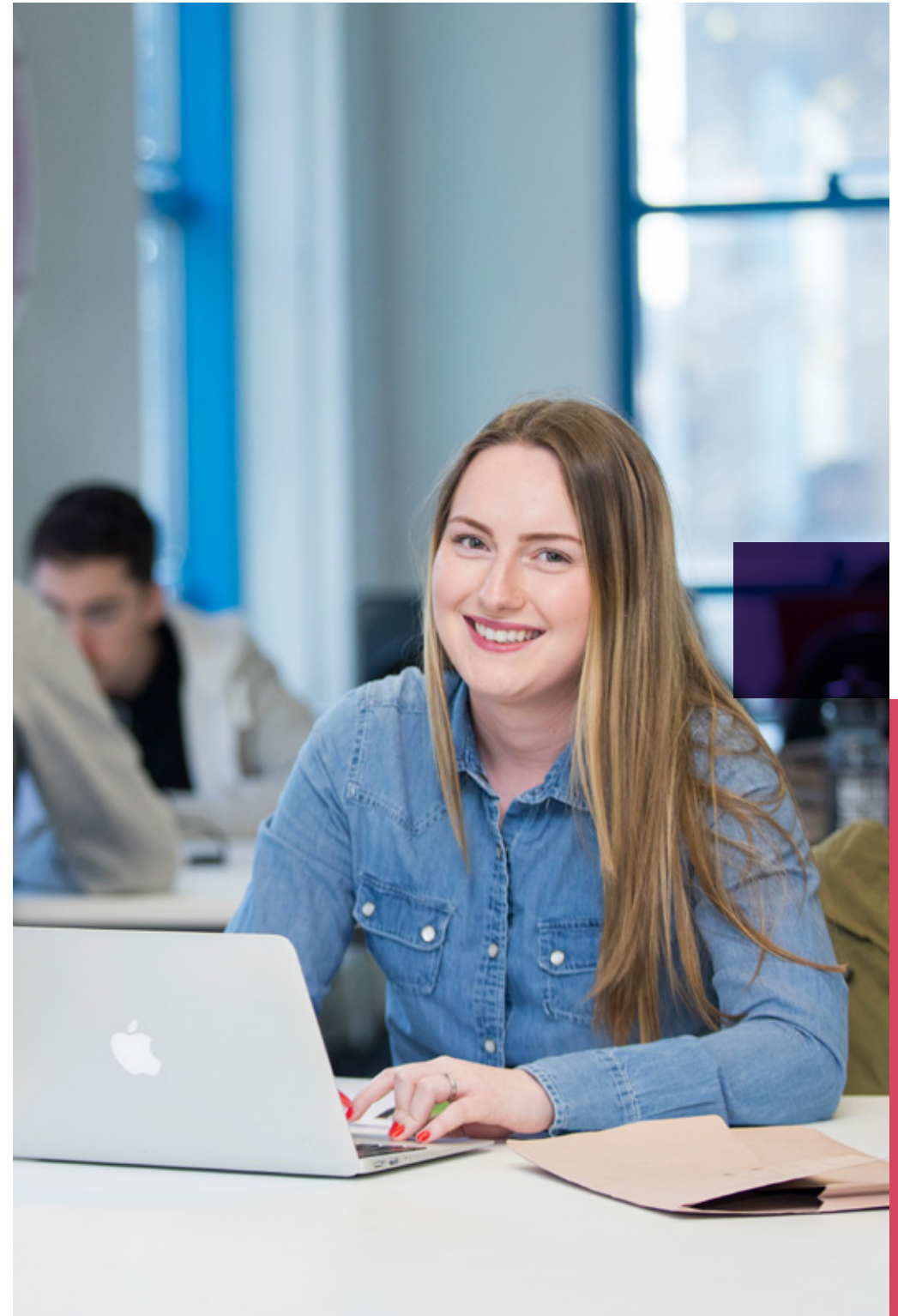
Accreditations

- BJTC - Broadcast Journalism Training Council

Course	Duration	Entry	Typical Offer*
BA (Hons) Journalism UCAS Code P501	Full-time: 3 years	September	A Level BCC or BTEC National Extended Diploma MMM

Full-time: Apply through UCAS | Institution code: L75

*For full Entry Requirements see lsbu.ac.uk



HUMAN GEOGRAPHY

This degree enables you to discover how human activity shapes, and is shaped by, shifting relationships between people and places. From gentrification in south London to migration at a global scale, Human Geography explores interactions between humans and the environments that they live, work and play in. By deepening your knowledge of these connections, you will better understand the opportunities and challenges that societies – urban and rural, rich and poor – currently face around the world.

You will have the opportunity to put theory into practice on residential field trips to Cornwall and Barcelona (at no extra cost) as well as regularly getting out and about, visiting a wide range of sites in London.

Elective modules allow you to develop specialised skills relevant to future careers in planning, housing, and tourism management.

Learning to gather, analyse and present data – in written form, presentations, professional reports, posters, maps and diagrams – will equip you with a set of skills that are highly valued in the contemporary workplace.

Employability and industry links

Graduates leave this course with the capacity to think analytically about society, culture and space. They can research and evaluate detailed qualitative and quantitative data and present their findings clearly.

We help you to gain exposure to professional specialisms through elective modules in town planning, housing, tourism and hospitality, and acquire insights from visiting speakers in these professions.

Facilities

You will have access to our dedicated new student resource room, which is an excellent space in which to work and study, whether individually or collaboratively with fellow students.

Accreditations

This course provides an entry route into our Masters course in Planning Policy and Practice, which is professionally accredited by the Royal Town Planning Institute (RTPI).

Course	Duration	Entry	Typical Offer*
BA (Hons) Human Geography UCAS Code L700	Full-time: 3 years	September	A Level BCC or BTEC National Diploma MMM

Full-time: Apply through UCAS | Institution code: L75

*For full Entry Requirements see lsbu.ac.uk



LAW

We have over 30 years of experience training lawyers and it shows: we've been ranked 1st for overall score in Law amongst London Modern competitors (Sunday Times League Table 2019). Our professionally accredited LLB Law courses will give you a basic grounding across all major issues concerning litigation and is the first step to becoming a solicitor, barrister or legal executive.

Employability and industry links

With a qualifying law degree like ours, you can go on to apply to the Legal Practice course or Bar Professional Training course, in order to qualify as a solicitor or barrister. Your strong analytical and persuasive skills open up many career choices in one of the most well-paid and socially important sectors.

25th

in the UK for law courses.
Guardian League Table 2019

Top 10

in UK for satisfaction with teaching in Law.
Guardian League Table 2019

Course	Duration	Entry	Typical Offer*
LLB (Hons) Business Law UCAS Code M108	Full-time: 3 years	September	A Level ABB or BTEC National Extended Diploma DDM
LLB (Hons) Criminal Law UCAS Code M102	Full-time: 3 years	September	A Level ABB or BTEC National Extended Diploma DDM
LLB (Hons) Law UCAS Code M100	Full-time: 3 years	September	A Level ABB or BTEC National Extended Diploma DDM
LLB (Hons) Law with Criminology UCAS Code M1M9	Full-time: 3 years	September	A Level ABB or BTEC National Extended Diploma DDM

Full-time: Apply through UCAS | Institution code: L75

***For full Entry Requirements see lsbu.ac.uk**

Legal Advice Clinic

Unique work opportunity for students

Our on-campus Legal Advice Clinic (LAC) is a free drop-in clinic, offering advice to the public. Supervised by a qualified solicitor, students interview clients and provide legal advice, giving a fantastic opportunity to gain first-hand experience working on legal issues.

Law student, Fatima Bello, found the experience hugely beneficial: "no other legal work experience I have done has given me this level of responsibility and client contact. Working at the clinic has really boosted my confidence. It is helping steer me towards becoming the type of lawyer I would like to be. It is truly an honour to be a student at LSBU and a volunteer at the Legal Advice Clinic."

For LLB (Hons) Law student Birgit Eisman, volunteering at the LSBU Legal Advice Clinic has been "an experience that I believe will stay with me throughout my career. Being able to provide advice in-person to genuine clients with genuine needs, whilst still studying, has been at times exhilarating, at times nerve-wracking, and always rewarding."

Not only has the experience been unique for Birgit, but she has been told by several prospective employers that it helped her CV stand out from the pack. With training contracts exceptionally competitive for law graduates, securing work experience before graduation can be vital – and the LAC helps students do just that.



MARKETING

Our courses provide a broad base in marketing with input from experts working in the field to ensure that we are on top of sector trends - and help you get ahead in your career.

Elements explored span from consumer behaviour, communications and brand management, through to market research and product development.

We give you plenty of opportunity to get experience through national and international competitions and graduate start-up and entrepreneur schemes.

Employability and industry links

Successful graduates have gone on to work in multinational and global companies, public sector organisations, charities and start-ups. Our courses will equip you to work in a range of marketing fields including corporate marketing, advertising, public relations and market research as well as digital and social media marketing. Equally our graduates are successful in client-based companies such as manufacturers and banks.

Accreditations

- CIM – Chartered Institute of Marketing
- IDM – Institute of Direct and Digital Marketing



No. 2



amongst London competitors for learning resources in Marketing. *National Student Survey 2018*

Industry in teaching – we bring guest lecturers into the classroom to add a new and modern twist to our teaching.

Course	Duration	Entry	Entry Requirements
BA (Hons) Marketing UCAS Code N502	Full-time: 3 years Full-time (Sandwich): 4 years Part-time: 4 years	September	A Level BCC, or BTEC National Extended Diploma DMM
BA(Hons) Marketing with Advertising and Digital Communications UCAS Code N562	Full-time: 3 years Full-time (Sandwich): 4 years Part-time: 4 years	September	A Level BCC, or BTEC National Extended Diploma DMM
BA(Hons) Marketing with Enterprise and Entrepreneurship UCAS Code NN51	Full-time: 3 years Full-time (Sandwich): 4 years	September	A Level BCC, or BTEC National Extended Diploma DMM
BA(Hons) Marketing with Luxury Brand Management UCAS Code N563	Full-time: 3 years Full-time (Sandwich): 4 years Part-time: 4 years	September	A Level BCC, or BTEC National Extended Diploma DMM
BA(Hons) Marketing with Public Relations UCAS Code NP52	Full-time: 3 years Full-time (Sandwich): 4 years Part-time: 4 years	September	A Level BCC, or BTEC National Extended Diploma DMM

Full-time: Apply through UCAS | Part-time: Apply direct to LSBU | Institution code: L75

***For full Entry Requirements see lsbu.ac.uk**

MECHANICAL ENGINEERING AND DESIGN

Mechanical Engineering and Design students apply technology, science, maths and industrial design to real world problems that affect everyone in our society. Our graduates are always in demand because of their solid technical ability and industrial experience.

Our students engage in enterprising problem-solving assignments, using good design practice and applied study, with our courses covering a broad range of industry pursuits. You'll gain the opportunity to collaborate on hands-on projects such as Formula Student – where you and a team can design, manufacture and test a race car at the Silverstone Circuit and Aim 93, with the aim of beating the world speed record for a human powered vehicle.

Projects of this kind allow our students to develop a strong foundational knowledge by which to move from university into industry.

All courses have a sandwich placement option whereby students work in industry for at least 30 weeks.

Employability and industry links

Mechanical Engineering is one of the most diverse of all engineering disciplines, with employment opportunities available across every sector you can think of – energy, transport, aviation, motor companies, robotics, pharmaceuticals and the marine industry.

Making a new product a success involves far more than just thinking about its visual shape. It must also provide real value to the user, be ergonomically user-friendly and be manufactured within cost constraints. We give our students the skills industrial designers need to make successful and profitable products from the conceptual stage to the finished article.

Graduates find roles in all areas of 3D design, including consumer products, packaging, toy, exhibition and consultancies.

Accreditations

- Institution of Mechanical Engineers (IMechE) – Chartered Engineer
- Institution of Engineering Designers (IED) – Incorporated Engineer & Chartered Technical Product Designer

Facilities

Our students enjoy the benefits of access to specialist labs, equipment and software including:

- Extensive design and manufacturing workshops – traditional sketch-modelling and prototyping facilities.
- Rapid prototyping technology – multi-material 3D printers and laser cutters.
- Computer Numerical Control (CNC) machining technology, industry-standard lathes, milling machines and metal sheet cutters.
- Innovative virtual engineering laboratory with multi-avatar virtual reality capability.
- Electronics laboratories for process and machine control.
- Coding laboratories for microprocessors both PIC and Arduino.
- Dedicated robotics and mechatronics laboratory.
- Engine dynamometer (electric, petrol and diesel).
- Thermodynamic laboratory.
- Materials testing laboratory.

No.1

London Modern University for graduate prospects in Mechanical Engineering. *Complete University Guide 2019*



One of the few courses in London that is accredited for Chartered Technical Product Designer status.

Course	Duration	Entry	Typical Offer*
Extended Degree Programme in Engineering UCAS Code H101	Full-time / Part-time: 1 year	September	A Level DDE or BTEC National Extended Diploma MPP
BEng (Hons) Advanced Vehicle Engineering UCAS Code H330	Full-time: 3 years Full-time (Sandwich): 4 years Part-time: 4 years	September	A Level BBB or BTEC National Extended Diploma DDM
MEng (Hons) Advanced Vehicle Engineering UCAS Code H335	Full-time: 4 years Full-time (Sandwich): 5 years Part-time: 5.5 years	September	A Level ABB or BTEC National Extended Diploma DDD
MEng (Hons) Mechanical Engineering UCAS Code H305	Full-time: 4 years Full-time (Sandwich): 5 years Part-time: 5.5 years	September	A Level ABB or BTEC National Extended Diploma DDD
BEng (Hons) Mechanical Engineering UCAS Code H300	Full-time: 3 years Full-time (Sandwich): 4 years Part-time: 4 years	September	A Level BBB or BTEC National Extended Diploma DDM
BEng (Hons) Mechanical Engineering and Design (Top Up) UCAS Code H301	Full-time: 1 year	September	HND with at least 60 credits at Merit in second year modules
BEng (Hons) Power Engineering (Mechanical) UCAS Code H363	Full-time: 3 years Part-time: 4 years	September	A Level BBB or BTEC National Extended Diploma DDM
MEng (Hons) Power Engineering (Mechanical) UCAS H637	Full-time: 4 years Full-time (Sandwich): 5 years Part-time: 5.5 years	September	A Level BBB or BTEC National Extended Diploma DDM

No.1

amongst London Modern competitors for overall satisfaction and learning opportunities in Mechanical, Production and Manufacturing Engineering.
National Student Survey 2018

Course	Duration	Entry	Typical Offer*
BEng (Hons) Power Engineering (Mechanical) (Apprenticeship)	Part-time: 4 years / 5.5 years	September	A Level BBB or BTEC National Extended Diploma DDM
BSc (Hons) Product Design UCAS Code H711	Full-time: 3 years Full-time (Sandwich): 4 years	September	A Level BBB or BTEC National Extended Diploma DDM
BSc (Hons) Engineering Product Design UCAS H770	Full-time: 3 years Full-time (Sandwich): 4 years	September	A Level BBB or BTEC National Extended Diploma DDM

Full-time: Apply through UCAS | Part-time: Apply direct to LSBU | Institution code: L75

*For full Entry Requirements see lsbu.ac.uk



Kristen Tapping

Student, BSc (Hons) Product Design

From winning an array of industry competitions, to securing a two-year placement at Grupo Antolin in Spain, I can confidently say that studying BSc Product Design at LSBU has led me on a very interesting and rewarding career path.

I was initially drawn to the LSBU Product Design course as it brings a very versatile and dynamic idea to design. From 2D to 3D design, you are challenged to think about how each element of the product will work together and consider both the ergonomic and aesthetic elements. I love having the ability to fuse functionality with design. This is what differentiated LSBU from other universities for me – rather than just being solely design or engineering focused, the course allowed me to combine the two.

It's been thrilling to enter all the competitions suggested by my Course Director, Robin Jones. And even better, that I can say that I've won a fair few including:

Starpack 2017

Won gold and £500 for my 'Disaster relief safety kit'

Grupo Antolin 2018

Won two special mentions and €2,000 for my 'Design a future concept car interior'

Bolt Burden Kemp 2018

Won gold, £3,000 and a 2 week internship for my product designed to help people with spinal cord injuries

Heatrae Sadia 2018

Won gold and £10,000 for my Heating Industry product design.

In addition to these, I recently submitted a project to the Troldekt 2018 competition regarding acoustic tiles and am currently working on my entries for the Stanford Longevity Design Challenge, the Heatrae Sadia 2019 competition, the RSA awards and the Fentress Airport design challenge in May 2019. I am especially excited about the Fentress project, as I will compete against mostly architecture students and am looking forward to demonstrating a product design approach to the same problem!

I am currently on a work placement at Grupo Antolin – a company that supplies automotive brands with interior parts and solutions. My role is to develop concept car interiors, aid with graphic and pattern designs, and work with providers to develop automotive grade materials. I was hired by the company after winning awards during the company's 2018 design challenge. I encourage students to participate in future design challenges.

NURSING AND MIDWIFERY

If you're aspiring to become a nurse or midwife, LSBU is the place to study. We offer all four specialist fields of nursing, which brings a rich experience and opportunities to help you become ready for the modern NHS and beyond.

Students benefit from specialised laboratories and placements with top NHS trusts, applying theory to real world situations and rehearsing the skills they learn in class. Graduates go into their respective professions with confidence, competence and care.

Academic staff are health and social care professionals with a wealth of experience who embody our ethos of patient-centred care and student-focused learning.

Employability and industry links

Modules and students are supported by our expert staff with a broad range of perspectives from across the NHS and social care organisations. This ensures our courses are always industry relevant and in line with best practice.

As the University of the Year for Graduate Employment for the second year running (The Times and Sunday Times Good University Guide 2019) it's not surprising that 99% of nursing students and 100% of midwifery students are in work or further study within 6 months of graduating.**

Facilities

Students on our nursing and midwifery courses use high-fidelity simulator mannequins, SimMan, SimBaby and SimMom in our skills laboratories which are sometimes held in the evening.

In these sessions, students recognise clinical signs, practise their skills and see physical responses to their interventions. You'll learn and rehearse essential skills in these controlled environments and, as a result, find that you get more out of your placements.

Accreditations

When you graduate, you'll be able to register as a nurse or midwife with the Nursing & Midwifery Council (NMC). Many of our graduates' first jobs are where they worked in placements during their training.

** Destination of Leavers from Higher Education (DLHE) 2017/18

1st

Joint 1st in UK for graduate prospects in Nursing.
Complete University Guide 2019

1st

for career prospects amongst London competitors.
Guardian League Tables 2019

1st

Ranked 1st for graduate prospects amongst London competitors.
Sunday Times League Table 2019

99%

of nursing students and 100% of midwifery students are in work or further study within 6 months of graduating.
DLHE 2017/18

Course	Duration	Entry	Typical Offer*
BSc (Hons) Adult Nursing UCAS Code B740	Full-time: 3 years	September (Southwark and Havering Campus)	A Level BBC or BTEC National Extended Diploma DMM
BSc (Hons) Children's Nursing UCAS Code B730	Full-time: 3 years	September	A Level BBC or BTEC National Extended Diploma DMM
BSc (Hons) Learning Disabilities Nursing UCAS Code B761	Full-time: 3 years	September	A Level BBC or BTEC National Extended Diploma DMM
BSc (Hons) Mental Health Nursing UCAS Code B760	Full-time: 3 years	September (Southwark and Havering Campus)	A Level BBC or BTEC National Extended Diploma DMM
BSc (Hons) Midwifery UCAS Code B720	Full-time: 3 years	September	A Level BBB or BTEC National Diploma DDM ; AND 5 GCSEs grade A*-C including Maths, English and Science or equivalent.
BSc (Hons) Midwifery (Shortened course)	Full-time: 90 weeks	September	NMC registration as an Adult Nurse (Level 1). All applicants must have acquired 120 credits at academic level 4 and 120 credits at academic level 5 or equivalent. Students are recruited to the programme via the Trust and University incorporating a Student Midwife Contract for the duration of their programme.

Full-time: Apply through UCAS | Institution code: L75

*For full Entry Requirements see lsbu.ac.uk

Learning Disabilities Nursing

You can make a big difference

People living with learning disabilities are often impacted by inequalities, both in society and in healthcare. In the UK, those with a learning disability have, on average, a reduced life expectancy of between 14–18 years, and have a significantly higher rate of avoidable deaths than those without a learning disability. LSBU staff and students are determined to make a difference in the lives of those with learning disabilities.

Senior Lecturer Jo Delree leads Learning Disabilities Nursing courses at LSBU. "We train the next generation of nurses not only to effectively care for patients and build their confidence, but also to promote social inclusion and pioneer positive change in the way that learning disabilities are recognised. Our graduates appreciate the complicating factors that learning disabilities have alongside someone's general health and practise without judgement," she says. "We champion our students because we want them to know that by supporting others, they can change people's future."

Learning Disabilities Nursing BSc (Hons) graduate, Jenny Ash, has experienced this first hand. "What really stands out is the quality of teaching and the passion that our lecturers bring into the classroom. They love what they do, and they want to see you grow and develop your own career."

After graduating, Courtney Francis (BSc (Hons) Learning Disabilities Nursing) is driven to turn this into reality. "I want to formulate an evidence-based desensitisation programme for people with anxieties about healthcare interviews. Many people with learning disabilities do not receive treatments that would improve their quality of life and I want to change that."

If you're ready to make a difference, apply now for Learning Disabilities Nursing BSc.



OCCUPATIONAL THERAPY

Occupational Therapists bring science and art into activity-based therapy and rehabilitation. Graduates work with patients within NHS, community services and private company environments to help them to achieve their goals and promote independence. Our lecturers care about students, their learning experience and application to real world situations, which is why we are ranked 1st for overall score amongst London Moderns for Health Professions (Guardian League Table 2019).

Employability and industry links

We maintain strong links with occupational therapists working in the public and private sectors and social enterprises across Greater London.

Our accreditation from the Royal College of Occupational Therapists ensures that you will be equipped and ready to work in hospitals, community-based services, schools, prisons, independent practice and voluntary organisations.

Accreditations

- Royal College of Occupational Therapists
- Health and Care Professions Council

Facilities

LSBU has three specialist laboratories: Art and Music, Splinting, and Assisted Daily Living (ADL) spaces. Students use the simulated kitchen, bathrooms and bedroom areas in the ADL lab to practise patient transfers, wheelchair manoeuvring and assisting with household independence skills.

Course	Duration	Entry	Typical Offer*
BSc (Hons) Occupational Therapy UCAS Code B930	Full-time: 3 years Part-time: 4 years	September	A Level BBB or BTEC National Extended Diploma DDM

Full-time: Apply through UCAS | Part-time: Apply direct to LSBU | Institution code: L75
***For full Entry Requirements see lsbu.ac.uk**



OPERATING DEPARTMENT PRACTICE

Operating Department Practitioners work as part of the operating theatre team and play a critical role in helping patients prepare for, undergo and recover from surgery. This exciting role supports anaesthetists before and during the procedure and provides immediate post-operative care. Students studying at LSBU benefit from rehearsing procedures in our specialist skills laboratories, and clinical practice in some of the most renowned hospitals in London.

Employability and industry links

When you graduate, you can apply to register with the Health and Care Professions Council (HCPC), allowing you to work as an operating department practitioner throughout the UK and selected countries abroad.

Facilities

LSBU's Operating Theatre skills laboratory is designed to reflect an operating theatre with an operating table, theatre lights, anaesthetic machine and scrub sinks. The fully functioning SimMan (simulator mannequin) can demonstrate a variety of life-like conditions, requiring diagnosis and treatment from students. Operating Department Practice students can practice their skills and techniques before going into placement.

Accreditations

- The College of Operating Department Practitioners
- Health and Care Professions Council

1st

for overall score amongst London Modern competitors for Health Professions. *Guardian League Table 2019*

1st

for the teaching on my course amongst London competitors for subjects allied to medicine. *National Student Survey 2018*

Course	Duration	Entry	Typical Offer*
BSc (Hons) Operating Department Practice UCAS Code B772	Full-time: 3 years	September	A Level BBC or BTEC National Extended Diploma DMM

Full-time: Apply through UCAS | Institution code: L75
*For full Entry Requirements see lsbu.ac.uk



PHYSIOTHERAPY

Physiotherapists provide quality care to patients as they effectively restore movement and function, often following illness or injury. Students benefit from quality practice-based placements across a range of settings, as well as strong links with practising clinicians.

Our courses cover exercise prescription, public health, preventative health care, movement analysis and science so that our students develop well rounded skills and expertise and are ready for practice.

Employability and industry links

Students spend at least 1,000 hours in clinical placements throughout the course. Our strong partnerships with clinics across public, private, charity and social enterprise settings provide first class placements for our students.

Facilities

Our clinical skills laboratories replicate real work environments including a physiotherapy suite, adult ward and critical skills lab. Students also have access to the Human Performance Centre which houses world class research and technology in sports and exercise science.

Accreditations

- Chartered Society of Physiotherapists
- Health and Care Professions Council

1st

for overall score amongst London Modern competitors for Health Professions.
Guardian League Table 2019

1st

for satisfaction with assessment amongst London Modern competitors for Health Professions.
Guardian League Table 2019

1st

for assessment and feedback amongst London competitors for subjects allied to medicine.
National Student Survey 2018

Course	Duration	Entry	Typical Offer*
BSc (Hons) Physiotherapy UCAS Code B160	Full-time: 3 years Full-time (Integrated Masters): 4 years	September	A Level ABB (with 2 Science A Levels) or BTEC National Extended Diploma DDD (Science)
Physiotherapy UCAS Code B161			

Full-time: Apply through UCAS | Part-time: Apply direct to LSBU | Institution code: L75

***For full Entry Requirements see lsbu.ac.uk**



POLITICS AND INTERNATIONAL RELATIONS

Are you looking for a unique insight into the way the world works? Delivered by experienced and enthusiastic academics, our courses can provide you with exactly that. Get an in-depth understanding of our modern world by exploring topics such as foreign policy analysis, international security, crimes against humanity, human rights, globalization, development and underdevelopment, diplomacy and conflict resolution, war and terrorism, and activism.

Enhance your employability by taking part in our optional work placement module, with opportunities like shadowing MPs, NGOs, Editor at E-International Relations or Operation Black Vote.

Be part of an academic community dedicated to social justice and global responsibility – with an inspiring schedule of guest speakers, events, volunteering opportunities and exchange of ideas.

Employability

Graduates are in demand for their skill-mix; including analysis, critical thinking, research, and strong communication skills. You'll also understand that problems are often multi-faceted and require thoughtful, creative and logical approaches. Typical careers include:

- Intergovernmental Organisations (IGOs): United Nations, Interpol, World Bank
- Third sector: International Non-governmental Organisations (INGOs), Non-governmental Organisations (NGOs), local charities (fundraising, research, project management)
- Policy: think tanks and central government
- General commercial businesses
- Teaching
- Further research.

No.1

in UK for teaching in Politics.
National Student Survey 2018

1st

Joint 1st for overall satisfaction
in Politics in the UK.
National Student Survey 2018

Course	Duration	Entry	Typical Offer*
BA (Hons) International Relations UCAS Code L250	Full-time: 3 years	September	A Level BCC or BTEC National Extended Diploma DMM
BA (Hons) International Relations with Politics UCAS Code L2L2	Full-time: 3 years	September	A Level BCC or BTEC National Extended Diploma DMM
BA (Hons) Politics UCAS L200	Full-time: 3 years	September	A Level BCC or BTEC National Extended Diploma MMM
BA (Hons) Politics with Journalism UCAS L2P5	Full-time: 3 years	September	A Level BCC or BTEC National Extended Diploma MMM
BA (Hons) International Relations with Journalism UCAS L4P5	Full-time: 3 years	September	A Level BCC or BTEC National Extended Diploma MMM

Full-time: Apply through UCAS | Institution code: L75
***For full Entry Requirements see lsbu.ac.uk**



PSYCHOLOGY

Our academics are experts in the field, specialising in a range of areas such as addiction, counselling, child psychology and clinical psychology. Our varied study pathways give you the opportunity to learn in an environment that supports you and your interests. Our courses are accredited by the British Psychological Society (BPS), providing you with a rich understanding of human behaviour and the processes that underlie learning, memory, social interactions and feelings.

Our courses are heavily influenced by the research that we carry out, and undergraduate students regularly conduct research with leading academics which is subsequently published in international journals. Our academics regularly give evidence to policy makers, including parliamentary groups and many are trustees of major UK organisations such as Alcohol Change UK (the organisation behind Dry January), SMART Recovery UK, and GambleAware.

Employability and industry links

From placement modules to talks by industry professionals, we offer you the chance to gain real, professional experience alongside an in-depth understanding of the sector. We hold professional links with numerous organisations and professional groups including the NHS, a range of mental health charities, drug and alcohol treatment organisations, national charities and parliamentary groups. Our courses meet the requirements for Graduate Basis for Registration (GBR), helping you towards future career success.

Accreditations

- The British Psychological Society
- Counselling & Psychotherapy Central Awarding Body (CPCAB) - Our BSc Psychological Counselling students are registered with the CPCAB and complete a portfolio and exam to obtain level 2 and 3 CPCAB certification.

Facilities

Our dedicated psychology laboratories and technical staff can support a wide range of studies, including observational research, biophysiological studies using equipment such as Biopac, and also eye tracking using a range of highly specialist equipment. All final year students undertake their own research projects, and have access to these specialist facilities and expert technical and academic staff.

Our Pub Lab has been set up to examine various aspects of drinking behaviour in an ecologically sensitive environment.

No.1

for career prospects in London in Psychology.
Guardian University League Table 2019

Course	Duration	Entry	Typical Offer*
BSc (Hons) Psychology UCAS Code C800	Full-time: 3 years Part-time: 4.5 years / 6 years	September	A level BBB or BTEC National Extended Diploma DMM
BSc (Hons) Psychology (Addiction Psychology) UCAS Code 9A12	Full-time: 3 years Part-time: 4.5 years / 6 years	September	A level BBB or BTEC National Extended Diploma DMM
BSc (Hons) Psychology (Child Development) UCAS Code C8X3	Full-time: 3 years Part-time: 4.5 years / 6 years	September	A level BBB or BTEC National Extended Diploma DMM
BSc (Hons) Psychology (Clinical Psychology) UCAS Code C840	Full-time: 3 years Part-time: 4.5 years / 6 years	September	A level BBB or BTEC National Extended Diploma DMM
BSc (Hons) Psychology (Forensic Psychology) UCAS Code 9R58	Full-time: 3 years Part-time: 4.5 years / 6 years	September	A level BBB or BTEC National Extended Diploma DMM
BSc (Hons) Psychology (Sport Psychology) UCAS Code C813	Full-time: 3 years Part-time: 4.5 years / 6 years	September	A level BBB or BTEC National Extended Diploma DMM
BSc (Hons) Psychological Counselling UCAS Code C8B9	Full-time: 3 years Part-time: 4.5 years / 6 years	September	A level BBB or BTEC National Extended Diploma DMM
BSc (Hons) Psychology with Criminology UCAS Code C8M9	Full-time: 3 years Part-time: 4.5 years / 6 years	September	A level BBB or BTEC National Extended Diploma DMM

Full-time: Apply through UCAS | Part-time: Apply direct to LSBU | Institution code: L75

***For full Entry Requirements see lsbu.ac.uk**

RADIOGRAPHY

Radiographers are at the front line of dynamic healthcare. Diagnostic Radiographers focus on producing high quality images while providing patients with excellent care. Therapeutic Radiographers work in radiation oncology departments. They play a vital role in treating people with cancer, focussing on localising tumours, planning and delivering ionising radiation whilst being supportive and caring for patients.

Employability and industry links

Our strong partnerships with radiography and imaging departments across the NHS and private sector provide first class placements for our students. Both of our radiography courses are validated by the Health and Care Professions Council and the College of Radiographers. Graduates from our radiography courses are eligible to apply for registration with the Health and Care Professions Council as either a Diagnostic Radiographer or a Therapeutic Radiographer based on their field of study. This registration allows graduates to practise within the NHS and private sector organisations both within the UK and abroad.

1st

for overall score amongst London Modern competitors for Health Professions.
Guardian League Table 2019

1st

for satisfaction with assessment amongst London Modern competitors for Health Professions.
Guardian League Table 2019

Diagnostic Radiography Facilities

As a Diagnostic Radiography student, you will practise your skills using the innovative new Fujifilm D-EVO suite. This is a digital diagnostic X-ray room used for practical tutorials on radiographic technique. You will rehearse adjusting the equipment and positioning patients for general X-rays with the help of fellow students. Additionally, LSBU's Digital Interpretation Laboratory has a similar Picture Archiving and Communication System (PACS) to those used by NHS. Students practise using the image interpretation system to evaluate and diagnose fractures and breaks and are trained in moving and handling patients.

Therapeutic Radiography Facilities

For Therapeutic Radiography students, LSBU offers a range of skills facilities including VERT (Virtual Environment for Radiotherapy Training). This virtual learning environment simulates a radiotherapy treatment room. Software applications allow students to develop Image Guided Radiotherapy (IGRT) skills and Physics principles by captivating 3D views and life size visualisations. Other facilities within the imaging skills laboratory include Eclipse treatment planning software which allows student to develop treatment planning skills such as 3D conformal planning; Intensity Modulated Radiotherapy (IMRT) and Volumetric Arc Therapy (VMAT).

Course	Duration	Entry	Typical Offer*
BSc (Hons) Diagnostic Radiography UCAS Code B821	Full-time: 3 years Part-time (In-Service): 3.5 years	September	A Level BBB or BTEC National Extended Diploma DDD
BSc (Hons) Therapeutic Radiography UCAS Code B822	Full-time: 3 years	September	A Level BBB or BTEC National Extended Diploma DDD

Full-time: Apply through UCAS | Part-time: Apply direct to LSBU | Institution code: L75

*For full Entry Requirements see lsbu.ac.uk



SOCIAL WORK

Social workers help some of the most vulnerable people in society. They provide support and assistance to individuals, families and groups in need of care. Students are encouraged to critically reflect and problem solve alongside service users and practitioners from a variety of backgrounds. We develop practitioners who can meet the needs of service users, carers and communities in a complex and ever changing welfare environment.

Employability and industry links

On graduating you will be eligible to register as a social worker with the Health and Care Professions Council. Practice-based learning complements university-led lectures, seminars and workshops, drawing on established, contemporary and innovative approaches to work with a diverse range of service users.

The course is underpinned by a commitment to inter-professionalism, anti-oppressive and anti-discriminatory values, and evidence-based practice aimed at empowering carers and service users.

Students will have two placements in social care settings, as well as 30 skills days within the University to graduate with confidence in a range of environments and situations.

Accreditations

- Health and Care Professions Council

1st

LSBU is joint 1st in UK for value added score for social work.
Guardian League Table 2019

1st

Our staff are industry experts with years of experience as social workers – and we're ranked 1st in London for student/staff ratio.
Guardian League Table 2019

Course	Duration	Entry	Typical Offer*
BA (Hons) Social Work UCAS Code L500	Full-time: 3 years	September	A Level BBB or BTEC National Extended Diploma DDM

Full-time: Apply through UCAS | Institution code: L75

*For full Entry Requirements see lsbu.ac.uk



SOCIOLOGY

Our sociology programmes provide you with a richer understanding of the complexity and diversity of modern life. We build up from classic sociological theories through to the cutting edge of what's happening in Artificial Intelligence, Big Data and Networking. You'll have the opportunity to study key issues from cultural diversity to the construction of social identities, looking at everything from sexuality to religion, race, gender and class.

Employability and industry links

Recent graduates have found work in areas from HM Treasury to academic research. Careers are likely in teaching, marketing, policy advisors, public administration, social work, the voluntary sector, social research, and journalism. Other graduates have chosen to go on to further study in areas from Psychology to Policy Studies to Development Studies, Refugee Studies, Criminology and more.

No.2

in London Modern Universities for graduate prospects in Sociology.
Complete University Guide 2018

Course	Duration	Entry	Typical Offer*
BSc (Hons) Sociology UCAS Code L300	Full-time: 3 years	September	A Level BCC or BTEC National Extended Diploma MMM
BSc (Hons) Sociology with Criminology UCAS Code L390	Full-time: 3 years	September	A Level BCC or BTEC National Diploma MMM

Full-time: Apply through UCAS | Institution code: L75

***For full Entry Requirements see lsbu.ac.uk**

SOCIAL JUSTICE AND GLOBAL RESPONSIBILITY

in the School of Law and Social Sciences

The School of Law and Social Sciences is proud to promote Social Justice and Global Responsibility. In a time of global disruption, we provide a focal point for innovative and critical engagement with the changing landscapes of the twenty-first century.

The theme is pervasive across each of our four Divisions. There's our sector-leading Legal Advice Clinic in Law; our modules on barriers to learning in Education; our focus on society, space and place in Urban, Environmental and Leisure Studies; and our analysis of human societies, cultures and behaviour in Social Sciences. Through these, we encourage our students to examine the sources, nature and impact of social injustice, inequality and exclusion.

Our academic research is underpinned by the work of our Centre for Social Justice and Global Responsibility. Working through our interdisciplinary research groups, we examine key issues of social justice reform in diverse areas such as access to justice, crime, disability, human rights, migration and sustainability and encourage students at all levels of academic study to engage with us.

SPORT

Whether you want to study sports science, coaching, rehabilitation or nutrition, LSBU offers you the chance to learn in a research-led environment, alongside experienced academics and with world-class facilities at your disposal.

Ensure future career success by gaining a range of coaching awards and vocational certificates with us, taking part in community-focused wellbeing initiatives and becoming one of our sport ambassadors.

Employability and industry links

Through optional work placements in the UK and overseas, alongside our client testing, training and rehabilitation guidance, we'll develop your employability throughout your course. Links with high profile partners like England Rugby, REPS, BASES, NHS, Millwall FC and the Rio Ferdinand Foundation mean you can take part in initiatives and gain an in-depth appreciation for the sector.

Facilities

The Human Performance Centre (HPC) is our commercial hub for activities such as product development/innovation, performance testing and wellbeing & lifestyle assessments. The Sport and Exercise Science Research Centre (SESRC) has a range of cutting edge facilities and equipment to carry out research into areas such as movement neuroscience, exercise physiology, sports psychology, nutrition and metabolism. The Functional Training Zone (FTZ) is a dedicated suspension training room featuring equipment such as monkey bars, battling ropes and a vertical resistance slide system.

Accreditations

- Register of Exercise Professionals (REPs)
- British Association of Sport Rehabilitators and Trainers (BASRaT)
- Sports Massage Association
- British Psychological Society (BPS)
- Nutrition Society

No.1

in London for graduate prospects in Sports Science.
Complete University Guide 2019

Course	Duration	Entry	Typical Offer*
BSc (Hons) Sports and Exercise Science UCAS Code C600	Full-time: 3 years Part-time: 5 years	September	A Level CCD or BTEC National Extended Diploma MMM
BSc (Hons) Sports Coaching and Analysis UCAS Code C610	Full-time: 3 years Part-time: 5 years	September	A Level CCD or BTEC National Extended Diploma MMM
BSc (Hons) Sport Rehabilitation UCAS Code C631 Integrated Masters Sport Rehabilitation UCAS Code C632	Full-time : 3 years Full-time (Integrated Masters): 4 years	September	A Level BBB or BTEC National Extended Diploma DDD
BSc (Hons) Psychology (Sport Psychology) UCAS Code C813	Full-time: 3 years Part-time: 4.5 years /6 years	September	A level BBB or BTEC National Extended Diploma DMM

Full-time: Apply through UCAS | Part-time: Apply direct to LSBU | Institution code: L75
*For full Entry Requirements see lsbu.ac.uk



Ashley Facey-Thompson

Alumnus, BSc (Hons) Sports Coaching and Analysis

The time spent studying Sports Coaching and Analysis helped table tennis player Ashley make his Paralympic debut at Rio in 2016 and he's now looking ahead to the Tokyo Games in 2020.

I got into table tennis by sheer chance

I was always sporty, but football was my thing. Then one day we went in for a PE lesson and there was a table tennis table set up. We were invited to have a go and it turned out I was pretty good. The teacher suggested I went along to a coaching session and that was it really. Pretty soon I gave up football and focused on table tennis 100%.

My disability doesn't hold me back

For the first two years I was playing, my coach didn't realise I had a disability. I have a condition called Erb's Palsy, which affects my balance and movement. When my coach found out, he immediately suggested I try for the Paralympic GB Team. I said OK, I'll give it a go. I made the cut and played my first major tournament, the Romanian Para Open, that same year, in 2009.

Table tennis is a full-time job

Playing table tennis at this level is a full-time job. I'm based at the English Institute of Sport in Sheffield, and we train every day from 9-11am and then again from 3-5pm. We do movement routines, practice serving and receiving, and do exercises designed to target specific weaknesses in our individual games. Three times a week, I'm at the gym doing conditioning work.

Controlling your nerves

I used to get really stressed out before a match or tournament. It didn't matter how much I'd prepared or how well I'd been playing in training – I'd still get really anxious. The mental side of the game is just as important as the physical. I spoke to a sports psychologist and that made a big difference. They helped me to get things more in proportion – yes, it matters, but it is just a table tennis match. And the more experienced I've gotten, the easier it's become. You just get used to operating in those highly-pressured situations.

Learning to handle stress has definitely had a positive impact on my performance. I enjoy playing more too – I'm not focusing on trying not to lose, I'm focusing on performing at my best. The rest follows naturally from that.



A valuable lesson

Missing out on selection for London 2012 was a valuable lesson in finding the positives in every situation. Of course, it was a shame not to be able to play at my home Games, but I was very young – only 17 – and I knew there would be more chances for me in the future. Even though I didn't make the team, I was selected to join the British Paralympic Association's Inspiration Programme, which meant I could go into the Olympic Village and hang out with the squad members. It was an amazing opportunity to find out what it's like to be at the Games. I really felt like part of the team and it made me even more determined to make it to Rio.

2017 European Championships

Winning silver at the European Championships in 2017 with my partner, Kim Daybell, is my proudest achievement so far. This year, I've reached two singles finals too, at events in Slovenia and Slovakia. That's pretty good going. I'm currently ranked eighth in the world, but I want to go further – top five, or even higher. Why not?

Looking ahead

The next big target is the World Championships in October – then beyond that, Tokyo 2020. Table tennis players typically peak at around 27 and I'm 23 now, so that should be an amazing opportunity for me.

The team is really like family

We're so close. The bonds are very tight. It's good to see, and it makes us stronger. I know it's something that other countries admire and maybe even fear a little. The brilliant thing is that everyone has different qualities and different strengths. I'm learning from them all the time.

THEATRE AND PERFORMANCE

We offer a supportive environment in which to explore your creativity with academic practitioners and theatre professionals, such as renowned theatre company Frantic Assembly. Through industry standard performances with our Student Theatre Company and international collaborations, you'll develop as an actor and performer in the heart of London and you'll be just a short distance from world famous theatres like the Royal National Theatre, The Old Vic and Shakespeare's Globe.

Employability and industry links

We work with directors, actors, performance companies and theatres, such as the Lyric Hammersmith and Southwark Playhouse, to ensure that our students gain the experience and understanding they need to progress into the creative and theatre industries. Our unique in-house LSBU acting agency offers the opportunity for students to gain corporate acting and voiceover experience.

Facilities

Edric Theatre and studio includes a 90-seat main house auditorium fitted with industry standard lighting, sound and AV technologies. Students also have access to a range of rehearsal studios, equipped with fully sprung floor, ballet barre, mirrors and audio systems.

Top 2

In London for overall satisfaction and teaching in Drama.
National Student Survey 2018

100%

of our BA Drama and Performance are in graduate employment or further study after 6 months.
DLHE 2017/2018

Course	Duration	Entry	Typical Offer*
BA (Hons) Drama and Performance UCAS Code W400	Full-time: 3 years	September	A Level BBC or BTEC National Diploma DMM
BA (Hons) Drama and Applied Theatre UCAS Code W440	Full-time: 3 years	September	A Level BBC or BTEC National Diploma DMM

Full-time: Apply through UCAS | Institution code: L75
***For full Entry Requirements see lsbu.ac.uk**

Ella-Louise Hayes

BA (Hons) Drama and Performance

From primary schools to prisons, teaching with drama can shape promising futures. LSBU graduate, Ella-Louise, praises her course and its Applied Theatre module.

What made you choose Drama at LSBU?

My brother was studying at LSBU and told me about the Drama course. It was also the only university which I saw that runs workshops with Frantic Assembly, who I love. I also wanted to study in London, so it was perfect for me.

What made you choose the Applied Theatre module?

I have always known that I wanted to be a teacher, so the Applied Theatre module was perfect for me.

I also knew that I wanted to write an essay on theatre in prisons and the influence it has on the inmates and when we were told about the module, I knew it was an option.

How did you find the module?

I really enjoyed the module; it was interesting learning about different practitioners in the field of applied theatre. Although we did not go into a prison, we did go into a primary school which I absolutely loved.

How has the module helped with your future career?

It gave me a slight feel of what it is like in a school setting and how rewarding it can be to become a teacher. It also helped me to start thinking about creating workshops for students and making sure that they are fun and engaging which was also really helpful.

Although I have known that I wanted to work in a secondary school specialising in drama, it did make me think for a split second that I might also give primary school teaching a go as well because I really did love it.

What are you doing now and where do you see your career going?

I am now a trainee teacher in Hertfordshire at a secondary school. Hopefully, after this year, I will pass this course and start my career teaching. After about 5-10 years in teaching, I'm hoping to see what it's like to teach theatre in prisons and perhaps become a drama therapist for younger children as well. I really want to try a variety of different jobs which all revolve around helping young adults and children and using drama to do that.

TOURISM AND HOSPITALITY

Studying in the heart of one of the world's most visited cities, you'll find your learning extends far beyond the lecture theatres and seminar rooms of LSBU. You'll see the industry up close for yourself, thanks to visits to a range of tourism and hospitality operations, destinations and trade fairs – it's all on our doorstep. Free field trips to Newcastle and Barcelona help you see tourism and hospitality in action in different settings.

Employability and industry links

This course will help you develop the skills needed to work in this global business, dealing with the commercial, social and cultural challenges that it brings. Our graduates work around the world, for international companies and small businesses alike. There are many start-ups dealing with bookings and logistics – an area you will be well-placed to work in.

Accreditations

- We are one of only 12 UK universities who are Association of British Travel Agents (ABTA) Education Partners.

No.1

Our research-active staff bring their expertise to your learning – we were ranked number one in London for Research Quality in 'Hospitality, Leisure, Recreation and Tourism'. *Complete University Guide 2019*

Course	Duration	Entry	Typical Offer*
BA (Hons) Tourism and Hospitality Management UCAS Code N821	Full-time: 3 years	September	A Level BCC or BTEC National Extended Diploma MMM
BA (Hons) Events and Entertainment Management UCAS Code N820	Full-time: 3 years	September	A Level BCC or BTEC National Extended Diploma MMM

Full-time: Apply through UCAS | Institution code: L75

*For full Entry Requirements see lsbu.ac.uk



ESSENTIAL INFO

116	Apprenticeships
122	Entry Requirements
124	Applying to LSBU
128	Fees and Funding
132	Info for International Students
134	Accommodation
138	You Should Be Here!

APPREN- TICESHIPS



Earn while you learn with an LSBU apprenticeship.

We have a history of training employees and we're continually expanding our offer. We currently have over 700 apprentices from over 250 employers at LSBU.

With an apprenticeship, your employer and the UK government pay for your course. You earn while you learn and at the end of the course you'll have benefited from relevant work experience, earned a degree, and built your professional network, and many courses lead to professional accreditation.

Apprentices studying at LSBU typically attend university one day per week and work four days per week.

The process of applying depends on whether you have an employer to sponsor you. If your employer has confirmed they'll support you, you can apply online at www.lsbu.ac.uk/apprenticeshipsapply.

If you're not employed, you'll need to find a job related to the apprenticeship you want to apply for, with an employer who is happy to support you. You can search which employers are currently advertising apprenticeships via the National Apprenticeship Service site.

www.findapprenticeship.service.gov.uk/apprenticeshipsearch

Search for 'London South Bank University'. If there are no search results, this means there are currently no vacancies. We update our vacancies regularly, so please do check back.

For Apprenticeship course enquiries, please contact us on 0800 923 8888 or at course.enquiry@lsbu.ac.uk. For application enquiries, it's apprenticeships@lsbu.ac.uk.

LSBU offers Apprenticeships at Higher and Degree level, more information on courses can be found on the relevant subject page.



APPRENTICESHIPS

Apprenticeship standard	Level	Qualification
Advanced Clinical Practitioner Apprenticeship	Level 7	MSc Masters degree in Advanced Clinical Practitioner
Associate Project Management Apprenticeship	Level 4	CertHE Associate Project Manager
Architectural Assistant Apprenticeship	Level 6	BA (Hons) degree in Architecture
Building Service Design Engineer	Level 6	BEng (Hons) Building Service Engineering
Building Services Engineering Technician Apprenticeship	Level 4	HNC in Building Services Engineering
Building Services Engineering Site Management Apprenticeship	Level 6	BEng (Hons) degree in Building Services Engineering
Chartered Manager Degree	Level 6	BA (Hons) degree in Business Management with Business Practice
Chartered Surveying Degree Apprenticeship (Quantity Surveying)	Level 6	BSc (Hons) degree in Quantity Surveying or BSc (Hons) degree in Building Surveying
Chartered Surveying Degree Apprenticeship (Building Surveying)		
Civil Design Engineer Apprenticeship	Level 6	BEng (Hons) Civil Engineering
Civil Engineering Site Management Apprenticeship	Level 6	BSc (Hons) degree in Civil Engineering
Construction Site Engineering Technician Apprenticeship	Level 4	HNC in Civil Engineering

Apprenticeship standard	Level	Qualification
Digital Marketer Degree Apprenticeship	Level 6	BA (Hons) Digital Marketing
Digital Technology Solutions Apprenticeship	Level 6	BSc (Hons) degree in Digital and Technology Solutions Professional (Pathway in: Network Engineer/ Software Engineer/ IT Consultant/Business Analyst/ Cyber Security Analyst/Data Analyst)
Data Analyst pathway		
Cyber Security Analyst pathway		
Business Analyst pathway		
IT Consultant pathway		
Network Engineer pathway		
Software Engineer pathway		
Embedded Electronic Systems Design and Development Engineer Apprenticeship	Level 6	BEng (Hons) degree in Electrical and Electronic Engineering
Healthcare Assistant Practitioner Apprenticeship	Level 5	FDS degree in Health
Nurse Degree Apprenticeship	Level 6	BSc (Hons) Adult Nursing BSc (Hons) Children's Nursing BSc (Hons) Learning Disability Nursing BSc (Hons) Mental Health Nursing
Nursing Associate Apprenticeship	Level 5	FDS degree in Nursing Associate
Senior Housing/Property Management Apprenticeship	Level 4	Cert HE in Housing Management

ENTRY REQUIRE- MENTS

To be offered a place on one of our undergraduate courses, you'll need to demonstrate that you have the necessary skills to study. Our admissions officers look for evidence of your motivation and commitment, alongside aptitude and potential.

Each course has its own entry requirements, which are listed on the relevant course page on our website www.lsbu.ac.uk. It's important that you read these before applying.

You'll need five GCSE passes at grade C or above – including English and Maths – for all courses. We also accept Functional Skills Level 2 Maths and English in place of GCSEs. If you completed your English and Maths GCSE under the new grading system, you'll need a grade 4 or higher.

Qualifications for Degree entry

As an example, we typically ask for one of the following for degree-level entry:

- two or three GCE A Level passes with specific grades;
- a pass in BTEC National Extended Diploma/Diploma with specific grades;
- successful completion of a recognised Access to HE course with a specific number of Level 3 Merits;
- other Level 3 qualifications of a similar volume and depth of study as those listed above, for example Scottish Highers, Irish Highers;
- International Baccalaureate Extended Degree/Foundation Degree/HND/HNC Typically for Extended Degree/Foundation Degree/HND/HNC-level entry we might ask for one of the following:
 - one or two GCE A Level passes with a specific grade
 - a pass in BTEC National Extended Diploma/Diploma/Diploma/subsidiary with specific grades or:
 - successful completion of a recognised Access to HE course with a specific number of Level 3 Merits
 - other Level 3 qualifications of a similar volume and depth of study as those listed above, for example Scottish Highers, Irish Highers;
 - International Baccalaureate.

Qualifications for international students

We accept a wide range of international qualifications – see our website www.lsbu.ac.uk.

APPLYING TO LSBU

For full-time courses, please send your application through UCAS (www.ucas.com) – the organisation responsible for managing applications to higher education courses in the UK. There are six key stages in the application process.

You should make your application for part-time courses directly at www.lsbu.ac.uk/apply. International students can either apply through UCAS or directly to LSBU using the form on the international section of our website, at www.lsbu.ac.uk/international/how-to-apply.

Top tips

- 1** Apply early! We give equal consideration to full-time applications received before 15 January. Certain courses could fill early in the cycle, so you have a better chance of obtaining a place on the course if you apply sooner. Also, the sooner you apply, the more time you will have to prepare for your time at University.
- 2** Make sure you fill out your UCAS form correctly and thoroughly. The more information we have, the easier it is to make an informed decision without requesting further information.
- 3** Make a note of the UCAS key dates and associated rules so you don't miss any important deadlines e.g. when to accept your offer.
- 4** Keep an eye out for emails from the University as these will tell you useful information or actions which you may have to take.
- 5** If you have any questions, please do get in touch with the Admissions Office.

Step 1 - Choose your course(s)

- Refer to the UCAS course search to see which universities offer the courses you're interested in
- Make sure you check the full entry criteria on our website
- Research the available options by looking at our website and prospectus, and by attending an Open Day
- Contact our course enquiries team if you have any specific questions.

Step 2 - Applying

- Visit the UCAS website for key application and deadline dates
- Prepare your personal statement
- Complete the qualifications section, listing all achieved and pending qualifications
- Add your referee's details
- Submit your application online via UCAS for full-time courses
- Apply directly to LSBU for part-time courses.

Step 3 - Offers

- Universities aim to make decisions on all applications received before the 15 January deadline by 31 March
- You can track your application progress via UCAS
- Some offers will be dependent on you attending an interview, which may include a test or submitting a portfolio
- Visit UCAS to reply to offers and make changes. Make yourself aware of the UCAS deadlines and status you need to be in to reply
- If you don't hold an offer after the first deadline date, you'll be eligible to apply for another course via UCAS Extra*.



Step 4 - Results

Check the UCAS website for details of which qualifications are automatically sent to UCAS. If your qualification is not listed, you'll need to provide your results at www.ucas.com/ucas/undergraduate/apply-and-track/results/sending-examresults.

Once Universities have your results, you'll be assigned one of the following UCAS statuses:

- You are accepted by your firm choice
- You are accepted by your firm choice, but they make you an offer on an alternative course
- Your results don't meet the conditions of your firm choice, but you are accepted by your insurance choice
- Your results don't meet the conditions of any of your choices and you are eligible for Clearing.

Step 5 - Next steps

If you do not hold any offers at this stage you may still find a place in Clearing.

All LSBU courses that still have places in Clearing are listed on our website www.lsbu.ac.uk/clearing.

Step 6 - Preparing

Once you have accepted your offer to LSBU and cleared any conditions, you'll be invited to enrol.

You will be asked to register your place online and come in for a face-to-face enrolment.

You'll also be invited to attend induction, which is usually specific to your course or department.

* Extra and Clearing are UCAS services that help those without places to find one if their original choices are unsuccessful or if they decline all their offers.

FEES AND FUNDING

Managing your money while you're studying can be tricky. It's a vital part of student life, and we're here to do everything we can to ease your worries. That way, you can concentrate on getting the most out of your studies.

Full-time undergraduate study

At LSBU, we've set our full-time fee for Home and EU undergraduates at £9,250 per year. You don't have to pay upfront for your course if you're a Home or EU student and you have a confirmed tuition fee loan from the Student Loans Company.

Part-time undergraduate study

Home students on part-time courses are also entitled to apply for a tuition fee loan. And as long as it's your first degree – and you complete at least 25% of the full-time course in one year – you can apply for a student loan. For details on individual part-time course fees, use our fee checker at www.lsbu.ac.uk/ug-fees.

International Students

International students must consider the full costs of studying in the UK. Your full expenses outlay will include your tuition fees, accommodation and living costs. Visit www.lsbu.ac.uk/international/fees-and-funding for further information about fees, estimated cost of living and available scholarships.

Possible fee changes

The University reserves the right to increase its fees in line with changes to legislation, regulation and any governmental guidance or decisions.

The fees for International students are reviewed annually, and additionally the University reserves the right to increase tuition fees in line with the RPIX measure of inflation up to 4%.

Loan repayment

When you graduate and earn above a certain amount of money (currently above £25,000) you will start repaying the loan. This is usually taken out of your salary each month.

Maintenance/Living cost loans and grants

If you are a full or part-time Home student, it is possible to get financial support from Student Finance England towards your living costs. How much you can borrow depends on where you live, where you study, your household income and, for part-time students, the intensity of your study.

Access Bursary

For September 2019 entry, our Access Bursary offers up to 100 £1,000 cash bursaries for new Full-time Home students paying fees of £9,250. The scheme has been set up to support new students from lower-income families. Details of the September 2020 entry Access Bursary are still to be clarified. For more information on the Access Bursary go to www.lsbu.ac.uk/access-bursary.

Other scholarships and bursaries

We offer several types of fee reduction through our other scholarships and bursaries. Find the full list and other useful information on funding your studies at www.lsbu.ac.uk/ug-fees.

Estimated weekly living expenses for students

In addition to your tuition fees, you will need to budget for living costs while studying in the UK. These costs will generally include your accommodation, food and drink, local travel, study materials and leisure activities.

10 FACTS ABOUT UNDERGRADUATE FEES

Useful links

www.lsbu.ac.uk/ug-scholarships

www.studentcashpoint.co.uk

www.ucas.com

www.unigrants.co.uk

www.direct.gov.uk/yourfuture

www.moneysavingexpert.com

1

You don't pay anything upfront if you are a full-time Home or EU student and have a confirmed tuition fee loan from the Student Loans Company.

2

Part-time students are eligible for tuition fee loans on exactly the same basis as full-time students (provided it's your first degree and you are studying at least 25% of a full-time course).*

3

When you start paying your fees back, it's at a rate of 9% of what you earn over £25,000. So if you earn £27,000 a year gross before tax, you'd only pay 9% on £2,000 per year.

4

You start paying back your fees three and half years after your course starts – usually the April after you graduate – but only if you're earning enough.

5

If your income falls below £25,000, your repayments automatically stop.

6

After 30 years, any remaining debt is written off.

7

Your tuition fee is more like a tax than a loan because you repay it through your employer via the tax system, with repayments rising as you earn more.

8

If you're self-employed, you repay the student loan just like you repay tax – via HMRC's Self-Assessment scheme.

9

Your student loan won't go on your credit file and it won't affect your ability to get a mortgage or another loan.

10

If you study on a pre-registration health and social care undergraduate course, such as BSc Nursing, Midwifery or Radiography you can apply for a tuition fee loan in the same way as for other undergraduate degrees.

Information correct at time of print but subject to change. For up-to-date information, please visit: www.lsbu.ac.uk/ug-fees

**Please note: if your loan is not in place, you will need to pay at least the initial down payment at your face-to-face enrolment session.*

INFO FOR INTER- NATIONAL STUDENTS

We welcome applicants from all over the world to LSBU. That's why we've committed more than £1 million in financial support to help well-qualified students from outside the EU meet the cost of their studies. We have a range of scholarships available – please see our scholarships pages for more details at www.lsbu.ac.uk/international/fees-and-funding/scholarships.

Our support services will help you settle in quickly at LSBU. We have a dedicated Immigration and International Student Advice team who can provide you with advice and support throughout your time with us. We provide assistance with:

- Orientation
- Opening a bank account
- Finding a doctor
- Accommodation
- Fees and finance
- Visa extension or other immigration questions
- Working in the UK during and after your studies
- Qualifications for international students

We accept a wide range of international qualifications. For guidance on whether your qualification will be acceptable please contact our International Office, check the country specific pages of the LSBU website at www.lsbu.ac.uk/international, or visit the National Academic Recognition Information Centre (NARIC), www.naric.org.uk.

If you're not ready to join one of our undergraduate programmes, you could take advantage of our International Undergraduate Foundation Programme (UFP), delivered in partnership with Cambridge Education Group. Check our website for course details.

English language requirement

If English isn't your first language, you'll need to achieve a certain level before starting your course, through a recognised English language qualification. We accept a range of English Language Qualifications, details of which can be found online at www.lsbu.ac.uk/international that are all equivalent to IELTS 6.

If you need a student visa to study in the UK, we advise you to check the Home Office immigration English language requirements. You may need to take a Secure English Language Test (SELT) as specified by the Home Office and meet the minimum component scores.

Visas and entry information

Most students from outside the EEA will need a student visa to study in the UK. The main visa route for students who wish to study in the UK is the Tier 4 (General) student visa.

LSBU holds a Tier 4 sponsor licence. This means we can sponsor overseas students with the relevant qualifications to study here under the Tier 4 (General) category. For further information, please see our website my.lsbu.ac.uk/page/international-students.

Please note that Tier 4 requirements may be subject to change at short notice. You should always consult the latest Tier 4 (General) policy guidance before making an application for entry clearance www.gov.uk/tier-4-general-visa.

More information about international applications can be found online www.lsbu.ac.uk/international or in our International Prospectus.

ACCOM- MODATION



Living away from home for the first time can be a big deal.

Our Accommodation Service is here to help make it comfortable, welcoming and hassle-free. There's an easy online application service – just visit www.lsbu.ac.uk/apply-accommodation.

You can rent from LSBU and you'll deal directly with the university, not third party providers. That means we can guarantee you options to suit all budgets, with clear tenancy agreements and all-inclusive rents that include insurance for your personal belongings, internet access in each bedroom and on-site laundry facilities.

Or, if you'd rather rent privately, we can give you a list of landlords – just ask our Accommodation Service.

If you're going to be based at our Havering Campus, we have university-checked accommodation at the Swan Housing Association's Union Road development in Romford, Essex. Get in touch at **0300 303 2500** or info@swan.org.uk.

If you have any disability or medical condition that affects the kind of accommodation you need, our Disability and Dyslexia Support team is here to help – call them on **020 7815 6405**.



Halls of Residence

Prices for the academic year 2019/20

	Room cost per week	Number of rooms
McLaren House	£130 (Standard room)	600 en suite rooms
	£140 (Queen Standard)	14 standard rooms
	£153 (Standard en suite)	
	£163 (Queen en suite)	
	£196 (Premium en suite)	Average room size
	£206 (Premium Queen en suite)	11.5–12 sq meters

	Room cost per week	Number of rooms
David Bomberg House	£153 (Standard en suite)	289 en suite rooms
	£163 (Queen en suite)	Average room size
	£196 (Premium en suite)	11.6 sq meters

	Room cost per week	Number of rooms
Dante Road	£126 (Standard room)	414 Standard rooms
	£136 (Queen Standard)	Average room size
	£196 (Premium en suite)	10.6 sq meters

	Room cost per week	Number of rooms
New Kent Road	£126 (Standard room)	81 Standard rooms
		Average room size
		11.5 sq meters

YOU SHOULD BE HERE!

www.lsbu.ac.uk/open-days

Come to our next Open Day to find out how we'll equip you for a successful career. This is your chance to find out what studying at LSBU is really like. Academic staff will be available to answer any questions you have about our courses, and current students and graduates will let you know what life at LSBU is really like.

From tours around our central London campus to one-to-one talks with academics about your subject area, there's so much to do on our Open Days.

Find out more about LSBU

Our 30-minute talks will guide you through choosing a course, applying to university, fees, scholarships and student life.

Tour our campus

Take a guided tour around our campus, student accommodation, library and more.

Find out about your course

Each of LSBU's Schools host their own talks, tours, one-to-ones and interactive sessions, so you can learn more about the subject area you're interested in and speak to academics.

How to get here

We're next to Elephant & Castle Underground and train station, with bus stops right outside our doors and bicycle racks dotted around campus.

Food and drink

Refresh and refuel at our campus cafes: Grads Cafe, Student Centre; Cafe Geo, K2; Breakpoint, Keyworth Centre; and Campus Express, London Road Building. You will receive a free drink voucher on arrival at the Open Day.

Explore London

Our central London campus is minutes from many of the city's world-renowned attractions. Make the most out of your visit and explore everything London has to offer.

For more information and to find out when our next Open Day is please visit www.lsbu.ac.uk/open-days.

INDEX

A

- Academic Schools **24–25**
 - School of Applied Sciences **24**
 - School of Arts and Creative Industries **24**
 - School of Business **25, 35**
 - School of Engineering **25**
 - School of Health and Social Care **25**
 - School of Law and Social Sciences **25, 105**
 - School of The Built Environment and Architecture **24**
- Accommodation **13–136**
 - Disability and Dyslexia Support **136**
 - Halls of Residence **137**
 - Havering Campus **136**
 - Online application service **136**
 - Prices **137**
 - Southwark Campus **136**
- Accounting **28, 29, 36**
 - Accounting and Finance **28, 29**
 - Business Management with Accounting **36**
 - Economics with Accounting **29**
- Adult Nursing **87**
- Advanced Vehicle Engineering **83**
- Applied Computing **48**
- Applied Sciences, School of **24**
- Applying to LSBU **124**
 - Steps **126**
 - Top tips **125**
- Apprenticeships **116–120**
 - Advanced Clinical Practitioner Apprenticeship **120**
 - Applying **118**
 - Architectural Assistant Apprenticeship **31, 120**
 - Associate Project Management Apprenticeship **120**
 - Building Services Engineering (Building Services Engineering Site Management) **44**
 - Building Services Engineering (Building Services Engineering Technician) **44**
 - Building Services Engineering (TAC Design) **44**
 - Building Services Engineering Technician Apprenticeship **120**
 - Civil Engineering (Civil Engineering Site Management) **45**
 - Civil Engineering (Construction Site Engineering Technician) **45**
 - Construction Site Engineering Technician Apprenticeship **120**
 - Digital and Technology Solutions Professional (Business Analyst) **49**
 - Digital and Technology Solutions Professional (Data Analyst) **49**
 - Digital and Technology Solutions Professional (IT Consultant) **49**
 - Digital and Technology Solutions Professional (Network Engineer) **49**
 - Digital and Technology Solutions Professional (Software Engineer) **49**
 - Digital Marketer Degree Apprenticeship **121**
 - Electrical and Electronic Engineering **61**
 - Healthcare Assistant Practitioner Apprenticeship **121**
 - Nursing Associate Apprenticeship **121**
 - Power Engineering (Electrical) **61**
 - Power Engineering (Transmission & Distribution) **61**
 - Quantity Surveying (Surveying Apprenticeship) **53**
 - Rail Systems Engineering (Signalling & Control) **61**
 - Rail Systems Engineering (Telecommunications & Networks Digital) **61**
 - Senior Housing/Property Management Apprenticeship **121**
- Architecture **30–31, 52, 120**
 - Architectural Assistant Apprenticeship **31, 120**
 - Architectural Engineering **52**
 - Architectural Technology **52**
 - Architecture **31, 52**
- Arts and Creative Industries, School of **24**

B

- The Built Environment and Architecture, School of **24**
- Baking Science and Technology **66**
- Baking Science and Technology **68**
 - Baking Science and Technology (Management) **68**
 - Baking Science and Technology (New Product Development) **68**
 - Baking Science and Technology (Nutrition) **68**
 - Baking Science and Technology (Science) **68**
- Biological Sciences **32–33, 42–44, 69**
 - Bioscience **33**
 - Human Nutrition **33, 69**
- Building Services Engineering **42–44**
 - Building Services Engineering (Building Services Engineering Site Management Apprenticeship) **44**
 - Building Services Engineering (Building Services Engineering Technician Apprenticeship) **44**
 - Building Services Engineering (TAC Design Apprenticeship) **44**
- Building Surveying **50–52**
 - Building Surveying **52**
 - Building Surveying (Surveying Apprenticeship) **52**
- Business **34–37, 48, –49, 78**
 - Business Information Technology **48**
 - Business Management **34–37, 120**
 - Business Management with Accounting **36**
 - Business Management with Business Practice **36, 120**
 - Business Management with Economics **36**
 - Business Management with Enterprise & Entrepreneurship **36**
 - Business Management with Finance **36**
 - Business Management with HR **36**
 - Business Management with Law **36**
 - Business Management with Marketing **36**
 - Business Management with Project Management **37**
 - Business Management with Health and Social Care **37**
 - Business Management with International Business Management **37**
 - Business, School of **25, 35**

C

- Chemical and Process Engineering **39**
- Chemical Engineering **39**
- Children's Nursing **87**
- Chiropractic **40**
 - Chiropractic Integrated Masters **40**
- Civil Engineering **42–45**
 - Civil Engineering (Civil Engineering Site Management Apprenticeship) **45**
 - Civil Engineering (Construction Site Engineering Technician Apprenticeship) **45**
 - Civil Engineering (TAC Design Apprenticeship) **45**
- Computer Engineering **58–59**
 - Computer Engineering **59**
 - Computer Systems and Networks Engineering **59**
- Computer Science **46–48**
 - Applied Computing **48**
 - Computing **49**
- Construction **50–52**
 - Construction **52**
 - Construction Management **52**
- Criminology **54**
 - Criminology with Journalism **54**
 - Criminology with Law **54**
 - Criminology with Psychology **54**

INDEX

D

Data Science **48**
Digital and Technology Solutions Professional
46–49
Digital and Technology Solutions
Professional Business Analyst
(Apprenticeship) **49**
Digital and Technology Solutions
Professional Cyber Security Analyst
(Apprenticeship) **49**
Digital and Technology Solutions
Professional Data Analyst (Apprenticeship)
49
Digital and Technology Solutions
Professional IT Consultant (Apprenticeship)
49
Digital and Technology Solutions
Professional Network Engineer
(Apprenticeship) **49**
Digital and Technology Solutions
Professional Software Engineer
(Apprenticeship) **49**
Drama **110**
Drama and Applied Theatre **110**
Drama and Performance **110**

E

Economics **28–29, 35–36**
Business Management with Economics **36**
Economics with Accounting **29**
Economics with Finance **29, 35**
Education **56**
Education **56**
Education Studies **56**
Electrical and Electronic Engineering **58–60**
Electrical and Electronic Engineering **59**
Electrical Engineering **59**
Electrical Engineering and Power
Electronics **59**
Electronics and Communications
Engineering **60**
Power Engineering (Electrical) **60**
Elephant & Castle **16**

Engineering **38–39, 42–45, 82**
Advanced Vehicle Engineering **83**
Building Services Engineering **42–44**
Building Services Engineering (Building
Services Engineering Site Management
Apprenticeship) **44**
Building Services Engineering (Building
Services Engineering Technician
Apprenticeship) **44**
Building Services Engineering (TAC Design
Apprenticeship) **44**
Chemical and Process Engineering **39**
Chemical Engineering **38, 39**
Civil Engineering **42–45**
Civil Engineering (Civil Engineering Site
Management Apprenticeship) **45**
Civil Engineering (Construction Site
Engineering Technician Apprenticeship) **45**
Electrical and Electronic Engineering **58**
Electrical Engineering and Power
Electronics **59**
Electronics & Communications
Engineering **60**
Engineering Product Design **84**
Mechanical Engineering **83**
Mechanical Engineering and Design **83**
Petroleum Engineering **38–39**
Power Engineering (Electrical) **60**
Power Engineering (Mechanical) **83**
Power Engineering (Transmission &
Distribution) **60**
Rail Systems Engineering (Signalling and
Control) **60**
Engineering Product Design **84**
Engineering, School of **25**
Enterprise **8–9, 36, 81**
Business Management with Enterprise &
Entrepreneurship **36**
Entry Requirements **122**
Events and Entertainment Management **112**
Extended Degree Programme **52, 83**
Extended Degree Programme in
Built Environment **52**
Extended Degree Programme in
Engineering **83**

F

Fashion and Advertising **62**
Creative Advertising with Marketing **62**
Fashion Promotion with Marketing **62**
Fees and Funding **128, 129**
Access Bursary **129**
Fee changes **129**
Full-time undergraduate study **129**
International Students **129**
Loan repayment **129**
Maintenance/Living cost loans
and grants **129**
Scholarships and bursaries **129**
Film **64**
Film **65**
Film Practice **65**
Film Studies **65**
Finance **28–29, 34–36**
Accounting and Finance **28–29**
Business Management with Finance **36**
Economics with Finance **29, 35**
Forensic Science **33**

G

Game Design and Development **71**

H

Halls of Residence **137**
Health and Social Care, School of **25, 37**
Healthcare Assistant Practitioner
Apprenticeship **121**
History **72**
History **72**
History with Politics **72**
Housing Policy and Practice **53**
Human Geography **76**
Human Nutrition **33, 69**
Human Resources (HR) **34–36**
Business Management with HR **36**

I

Informatics **46**
Information Technology **48**
International Relations **96–97**
International Relations with Journalism **97**
International Relations with Politics **97**
International Students **132–133**
English language requirement **133**
Visas and entry information **133**

J

Journalism **74**

L

Law **36, 54, 78–79, 105**
Business Law **78**
Business Management with Law **36**
Criminal Law **78**
Criminology with Law **54**
Law with Criminology **78**
Legal Advice Clinic **79**
Law and Social Sciences, School of **25, 105**
Learning Disabilities Nursing **87**
Legal Advice Clinic **79**
London **12, 15, 16**

M

Marketing **80**
Marketing **81**
Marketing with Advertising & Digital
Communications **81**
Marketing with Enterprise &
Entrepreneurship **81**
Marketing with Luxury Brand
Management **81**
Marketing with
Public Relations **81**
Mechanical Engineering **82–83**
Mental Health Nursing **87**
Midwifery **86**
Music and Sound Design **71**

INDEX

N

- Nursing **86–88**
 - Adult Nursing **87**
 - Children's Nursing **87**
 - Learning Disabilities Nursing **87**
 - Mental Health Nursing **87**
 - Nursing Associate Apprenticeship **121**
- Nutrition **66–69**
 - Baking Science and Technology (Nutrition) **68**
 - Human Nutrition **69**

O

- Occupational Therapy **90**
- Open Days **139**
- Operating Department Practice **92**

P

- Petroleum Engineering **39**
- Photography **64**
- Physiotherapy **94**
- Politics **96–97**
 - History with Politics **72**
 - International Relations with Politics **97**
 - Politics with Journalism **97**
- Power Engineering **58, 60, 83**
 - Power Engineering (Electrical) **60**
 - Power Engineering (Mechanical) **83**
 - Power Engineering (Transmission and Distribution) **60**
- Product Design **82–85**
 - Engineering Product Design **84**
 - Product Design **84**
- Psychology **98–99**
 - Psychological Counselling **99**
 - Psychology **99**
 - Psychology (Addiction Psychology) **99**
 - Psychology (Child Development) **99**
 - Psychology (Clinical Psychology) **99**
 - Psychology (Forensic Psychology) **99**
 - Psychology (Sport Psychology) **99, 107**
 - Psychology with Criminology **99**

Q

- Quantity Surveying **52**
 - Quantity Surveying **52**
 - Quantity Surveying (Surveying Apprenticeship) **53**

R

- Radiography **100–101**
 - Diagnostic Radiography **101**
 - Therapeutic Radiography **101**
- Rail Systems Engineering (Signalling and Control) **60**
- Real Estate **52**
- Research **10**

S

- Academic Schools **24**
- Social Work **102**
- Sociology **104**
 - Sociology **104**
 - Sociology with Criminology **104**
- Sport **106–108**
 - Psychology (Sport Psychology) **107**
 - Sport Rehabilitation **107**
 - Sports and Exercise Science **107**
 - Sports Coaching and Analysis **107**
- Student Finance **129**
- Student Loans Company **129**
- Students' Union **22, 23**
- Student Support **20**

T

- Teaching Excellence Framework **5**
- Theatre and Performance **110**
 - Drama and Applied Theatre **110**
 - Drama and Performance **110**
- Tourism and Hospitality **112**
 - Events and Entertainment Management **112**
 - Tourism and Hospitality Management **112**

U

- Urban and Environmental Planning **53**

Course Enquiries (UK and EU)

0800 923 88 88
course.enquiry@lsbu.ac.uk
lsbu.ac.uk

International Office (Non-EU)

+44 (0)20 7815 6189
internat@lsbu.ac.uk
lsbu.ac.uk/international

How to apply

For full-time courses, please send your applications through the Universities and Colleges Admissions Service (UCAS) – the organisation responsible for managing applications to higher education courses in the UK.

There are six key stages in the application process, which are outlined on page 126.

You should make your application for part-time courses directly at www.lsbu.ac.uk/apply

International students can either apply through UCAS or directly to LSBU using the form available at www.lsbu.ac.uk/international/howto-apply

UCAS website
www.ucas.com

LSBU course search
www.lsbu.ac.uk/course-finder

UCAS institution code
L75

0800 923 88 88
lsbu.ac.uk

Disclaimer

Every effort has been made to ensure that the information in this prospectus is accurate, and all information is believed to be correct at the time of publication, but please make sure that you always check our main website course pages for the latest information before making an application. If the University perceives the need to make a change or changes to a course, it will take steps to communicate to students and prospective students of that course, what assistance and options they will be offered in terms of switching course and/or withdrawal from the course without penalty and/or adjustment of fees and/or switching to another higher education provider.

Acknowledgements

Designed by the LSBU Design Team.

Printed by Pureprint Group
www.pureprint.com

Maps produced by Lovell Johns
Contains Ordnance Survey data
© Crown copyright and database right 2015.

London South Bank University is a charity and a company limited by guarantee.

Registered in England no. 986761
Registered Office: 103 Borough Road,
London SE1 0AA

LSBU is the can do, go do university.

With engaging, accessible courses, real-world facilities, powerful industry links and a location in London's thriving heart, LSBU helps everyone, no matter what their background, to unlock their potential and find opportunities in all areas of life.

Our students are diverse, talented and enterprising. Our teaching is professional, technical and vocational. Together we encourage and empower every individual, seeing their potential and helping them develop the knowledge, skills and attitude needed for success in work and in life.

When you graduate from LSBU, you go into the world skilled, confident, creative and determined, with real world experience that employers genuinely value.

With a can do attitude, you can go do anything.



**London
South Bank
University**

EST 1892



103 Borough Road, SE1 0AA
lsbu.ac.uk

