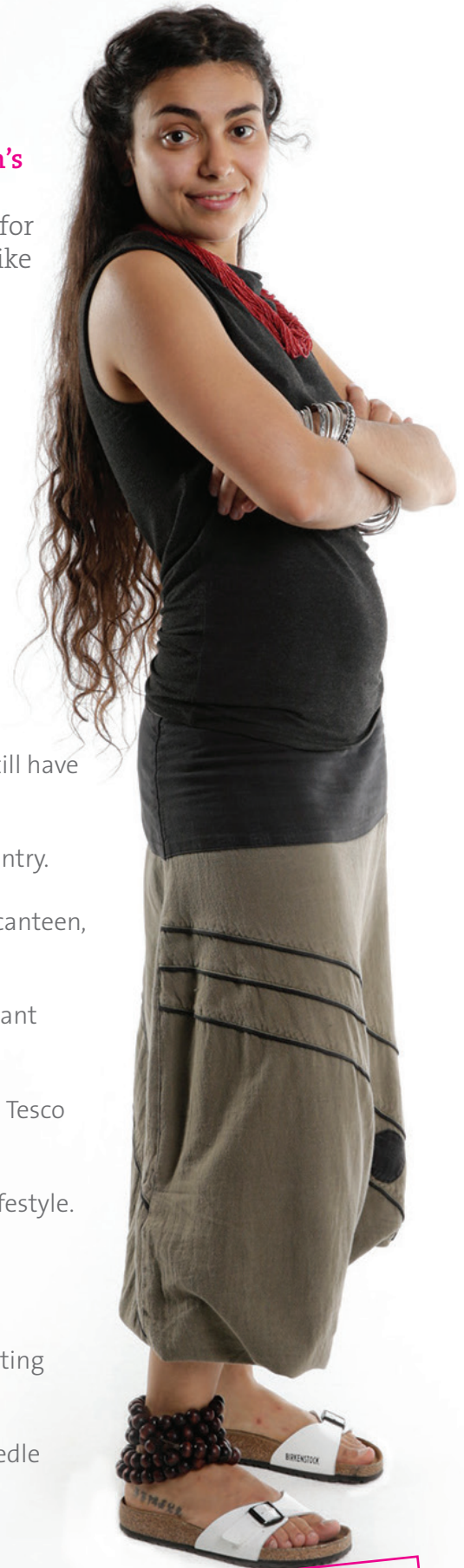


16 SIGNS YOU'RE AN LSBU STUDENT

As an LSBU student you're lucky enough to attend one of London's largest and oldest universities. Nestled in Elephant and Castle, a stone's throw from the south bank of the Thames, LSBU is known for its community feel and diverse student body. But what's it really like to study here? We've compiled a list of 16 unifying things that all LSBU students will understand.

1. You have the entire city of London right on your doorstep, yet you rarely venture past Elephant and Castle.
2. You can see the Shard, the Gherkin and the London Eye from your classroom window.
3. You seriously consider becoming a shareholder in Wetherspoons because you're convinced you're solely funding their business.
4. The thought of getting lost in London Road makes you break out in a cold sweat.
5. Despite spending a substantial amount of time studying at LSBU, you still have no idea what the name 'Elephant and Castle' means.
6. You never feel like an outsider, and you have a classmate from every country.
7. Whenever you order lunch from the street food station in London Road canteen, you come away with a plate mainly full of coriander.
8. Your daily workout consists of dragging yourself up all 117 steps at Elephant and Castle Tube station.
9. You're pretty sure that at least 85% of your body consists of Subway and Tesco meal deals.
10. You and your friends are always far too busy to lead a typical student lifestyle.
11. You rely heavily on abbreviations: LLR, LRC, LR, K2, ARC, LSBSU... the list is endless!
13. You proudly brag more about LSBU's employability ratings than its sporting achievements.
14. Finding a free seat in the Learning Resources Centre is like finding a needle in a haystack.
15. You know the Tube map like the back of your hand.
16. You look forward to graduating in the swish surrounds of the Royal Festival Hall.



#proudsouthbanker