


The Psychology of Prescribing

Professor Patrick Callaghan  
13 March 2018

Become what you want to be



---

---

---

---

---


---

---

---

“The fool doth think he is wise, but  
the wise man knows himself to be a  
fool”  
(Shakespeare, As You like it, Act 5 Scene 1)

Become what you want to be



---

---

---

---

---

---


---

---

Outline of session

- Examine the role of ‘psychological’ issues in prescribing
- Understand how to apply evidence from psychology into prescribing practice
- Improve your prescribing practice

Become what you want to be



---

---

---

---

---

---

---

---

### Food for thought

50% of people do not take prescribed medicine

£230m of medicines returned to pharmacies each year

\$100bn lost in US

£1.03bn cost of prescribing in UK in past 12 mths; up 3.4%

Poor non-adherence is linked to poorer outcomes

<http://journalpublications.chestnet.org/article.aspx?articleid=1210785>  
<file:///C:/Users/ntrp2/Downloads/mm-adherence-2012-final1.pdf>

Become what you want to be



---

---

---

---

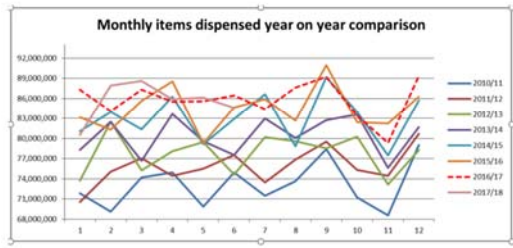
---

---

---

---

Year on Year Monthly Items Dispensed



<http://psnc.org.uk/funding-and-statistics/nhs-statistics/>

Become what you want to be



---

---

---

---

---

---

---

---



**EEPRU** Policy Research Unit in Economic Evaluation of Health & Care Interventions

Policy Research Unit in Economic Evaluation of Health & Care Interventions (EEPRU)

#### PREVALENCE AND ECONOMIC BURDEN OF MEDICATION ERRORS IN THE NHS IN ENGLAND

Rapid evidence synthesis and economic analysis of the prevalence and burden of medication error in the UK

Authors: Rachel A Elliot<sup>1</sup>, Elizabeth Carmacho<sup>2</sup>, Fiona Campbell<sup>3</sup>, Oana Jankovic<sup>4</sup>, Marissa Marilyn St James<sup>1</sup>, Eve Kallenthaler<sup>5</sup>, Ruth Wong<sup>6</sup>, Mark J Sculpher<sup>7</sup>, Rita Faria<sup>8</sup>

<sup>1</sup> Manchester Centre for Health Economics, Division of Population Health, Health Services Research and Primary Care, School of Health Services, The University of Manchester

<sup>2</sup> Scoville, University of Sheffield

<sup>3</sup> Centre for Health Economics, University of York

Become v



---

---

---

---

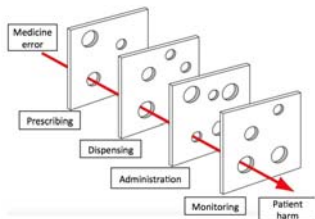
---

---

---

---

### How errors occur



Become what you want to be



---

---

---

---

---

---

---

---

### Burden of medication errors in UK

- 5 days more LOS
- Costs £98.5m/annum
- Using 181,626 bed days
- Causing 712 deaths; contributing to 1708!
- Including A&E and ICUs:
- Costs NHS £188.4m/annum; using 185,814 bed days; contributing to 1855 deaths
- Including Primary Care: errors add 14.25 days LOS; costs £1.6Bn; using 3.8 million bed-days, contributing to 22,303 deaths!

Become what you want to be



---

---

---

---

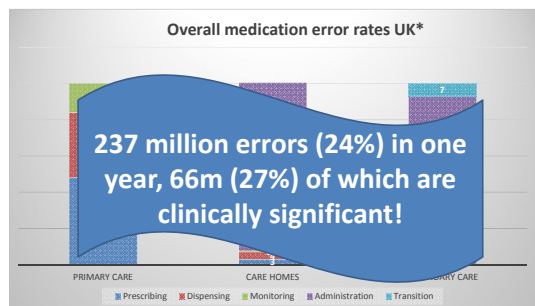
---

---

---

---

### Medication errors



\*Elliott et al (2018) <https://www.espcu.org.uk/wp-content/uploads/2018/07/medication-error-report-raised-final-2-22022018.pdf>

Become what you want to be



---

---

---

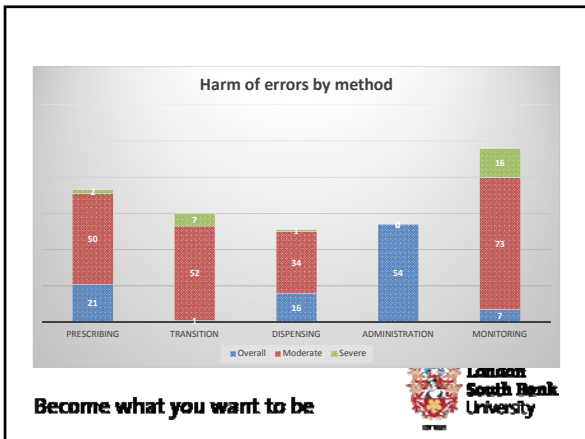
---

---

---

---

---



---

---

---

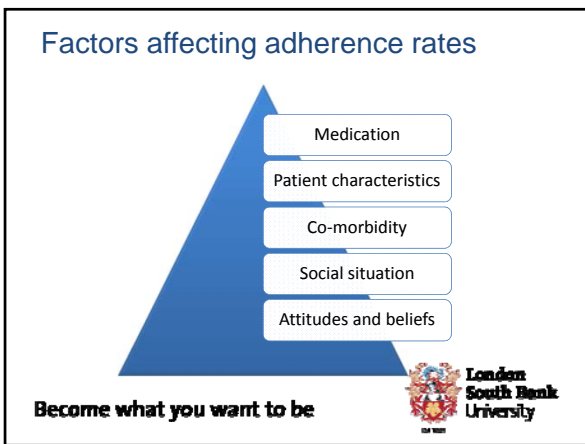
---

---

---

---

---



---

---

---

---

---

---

---

---



---

---

---

---

---

---

---

---



---

---

---

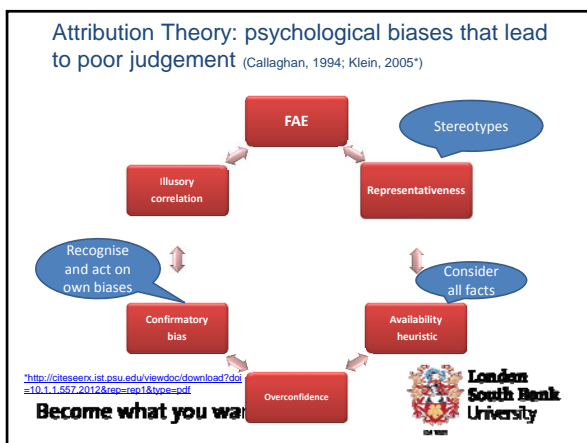
---

---

---

---

---



---

---

---

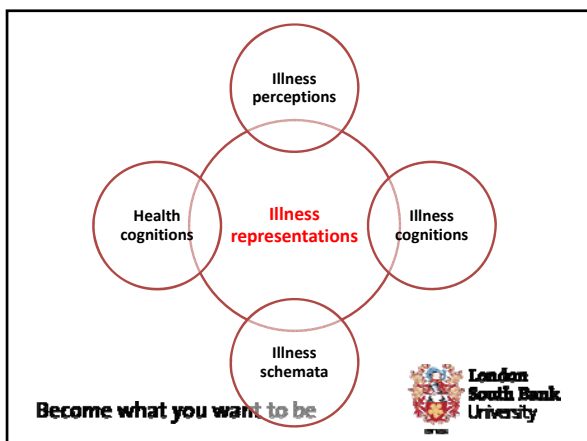
---

---

---

---

---



---

---

---

---

---

---

---

---



---

---

---

---

---

---

---

---



---

---

---

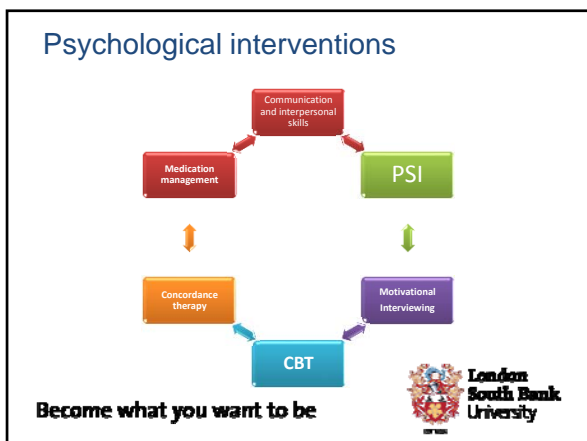
---

---

---

---

---



---

---

---

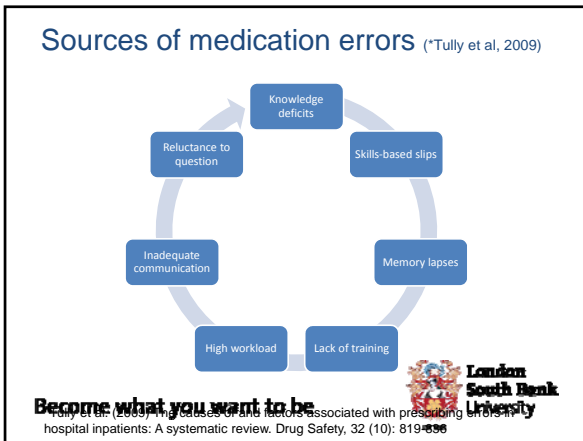
---

---

---

---

---




---

---

---

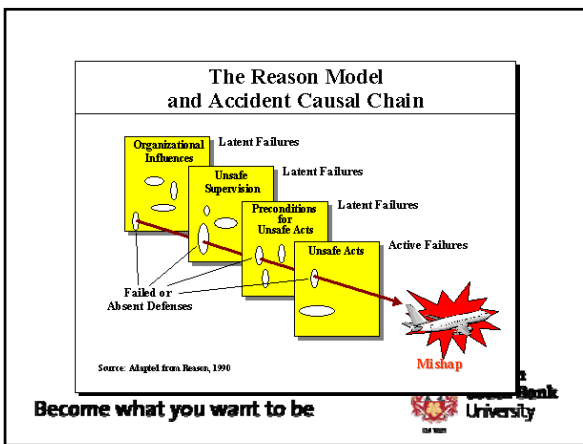
---

---

---

---

---




---

---

---

---

---

---

---

---




---

---

---

---

---

---

---

---

### Key messages

A fundamental understanding of psychological issues and principles will:

- Enable you to better understand people's responses to health, illness and its treatment
- Help you use evidence-based psychological interventions with ease
- Enhance your prescribing practices, make them safer and reduce error risk

Become what you want to be



---

---

---

---

---

---

---

---

### Recommended reading

- Abraham, C. & Michie, S. (2008) A taxonomy of behavior change techniques used in interventions. *Health Psychology*, 27, 3, 379-87
- Ayers, S.; Baum, A.; McManus, C.; Newman, S.; Wallston, K.; Weinman, J.; & West, R. (2007, Eds.) *Cambridge Handbook of Psychology, Health and Medicine*. 2<sup>nd</sup> Edition. Cambridge, Cambridge University Press
- Bressington, D. & Wilbourn, M. (2006) Medication management. In P. Callaghan, J.F. Playle & L. Cooper (Eds.) *Mental Health Nursing Skills*, Oxford, Oxford University Press, Chap. 13, pp. 134-144.
- Callaghan, P. (2013) Behaviour Change Theory. In T. Stickley & N. Wright (Eds.) *Theories for Mental Health Nursing*, London, Sage, chap. 20, pp.324-343
- Callaghan, P. & Morrissey, J. (1993) Social Support and Health: A review. *Journal of Advanced Nursing*, 18, 203-210
- Elliott, RA et al (2018) <http://www.epru.org.uk/wp-content/uploads/2018/02/medication-error-report-revised-final-2-22022018.pdf>
- Goldacre, B. (2012) *Bad Pharma: How drug companies mislead doctors and harm patients*. London, Forth Estate
- Haynes, R.B.; Ackoo, E.; Sahota, N.; McDonald, H.P. & Yao, X. (2009) Interventions for enhancing medication adherence. *Cochrane Database of Systematic Reviews* 2009, Issue 2, CD000011, DOI 10/1002/146511858 CD000011, pub.3
- Hettema, J.; Steele, J. & Miller, W. R. (2005) Motivational Interviewing. *Annual Review of Clinical Psychology*, 1, 91-111
- Horné, R. (2006) Compliance, Adherence and Concordance: Implications for Asthma Treatment. Accessed from <http://journal.publications.chestnet.org/Mobile/article.aspx?articleid=1210785> on 6<sup>th</sup> January 2014
- Kahneman, D. (2011) *Thinking, Fast and Slow*. London, Penguin Books
- Morrissey, J. & Callaghan, P. (2011) *Communication Skills for Mental Health Nurses*. Buckingham, Open University Press
- Klein, J.G. (2005) 5 Pitfalls in diagnosis and prescribing: psychological biases that distort clinical decisions about health. Accessed from <http://www.aikconsulting.com/944/article.pdf> on 6<sup>th</sup> January 2014
- Kleinman, A. (1988) *Patients and healers in a cross-cultural setting: An exploration of the clinical encounter*. Haven & London, Yale University Press

Become what you want to be



---

---

---

---

---

---

---

---