



Open Day

Saturday 30th September 2017
11am-3pm (Doors open from 10.30am)



EST 1897

**London
South Bank
University**



Welcome to London South Bank University (LSBU). For more than 125 years we have been transforming lives, businesses and communities through excellent professional education, research and enterprise.

At LSBU we are ambitious for our students and for our future. Rated Silver for Teaching Excellence (TEF), we are recognised for providing high quality teaching and learning outcomes for all.

What sets us apart from other universities is our focus on developing enterprising skills that enable our students to see opportunities in all areas of life. We empower our students to develop the knowledge skills and attitude needed for success in work and in life.

We arm our students with the talents and resilience for a lifetime of opportunity and success. With 9 out of 10 graduates in work or further study 6 months after graduation – we are the number one London Modern University for graduate prospects. And this weekend The Sunday Times named LSBU as the University of the Year for Graduate Employment.

Today you will have the opportunity to speak to academics about the courses you want to study, tour the campus and learn about student life at LSBU.

But above all us, I hope you will understand how we can help you to develop a can do, will do, go do attitude to life

Prof. David Phoenix OBE, DL, Vice-Chancellor

General Talks and tours

Why Choose LSBU

11am–11.30am | 12.30am–1pm
Events Theatre, Keyworth Centre

If there is only one session you attend – this is it. Everything you need to know about LSBU in 30 minutes, with presentations from our Pro-Vice Chancellor, graduates and current students

Accommodation: Your Questions Answered

11.30am–12pm | 1.30am–2pm
Events Theatre, Keyworth Centre

Find out more about our friendly, comfortably and secure student accommodation

Disability, dyslexia and wellbeing support

12pm–12.30pm
VG11, K2 Building

We care about our students and have a ton of support in place to ensure you can succeed in your studies, overcome challenges and stay happy and healthy during your time here

LSBU is University of the Year for Graduate Employment – find out why

11.30am–12pm
VG11, K2 Building

At LSBU we'll help you develop the skills to take the next step on the career ladder and find the right job for you, both whilst at University and after you graduate

Student life at LSBU

12.30am–1pm
VG11, K2 Building

Hear first-hand from our students about what life is like at LSBU from the academic support we offer to what the social life is like

Top tips for completing your UCAS application

2pm–2.30pm
VG11, K2 Building

Take the stress out of completing your UCAS with our top tips for picking the right course and writing a compelling statement

Student fees, finance and scholarships

12.30pm–1pm | 1pm–1.30pm
Events Theatre, Keyworth Centre

Take a tour of some of rooms and find out why our accommodation is a great way to meet students from different backgrounds, make new friends and focus on your studies

Accommodation tours

Tours Run every 20 minutes
Frist tour departs at 10.30am
Mezzanine, Keyworth Centre

Take a tour of some of rooms and find out why our accommodation is a great way to meet students from different backgrounds, make new friends and focus on your studies

Campus tours

Tours Run every 20 minutes
Frist tour departs at 10.30am
Mezzanine, Keyworth Centre

Our Student Ambassadors will be guiding small groups around the local area and introducing to some of key facilities, including the library, Learning Resource Centre (LRC) and Academy of Sport

In-depth Learning Resource Centre (LRC)

11.30am | 2.15pm
LRC Entrance, Borough Road

Tour Take a tour of our LRC and find out about the resources available to students 7 days a week during term-term, including access to over 400 PCs and dedicated training support to help you develop get the digital, maths and English skills needed to succeed in your studies

In-depth Library tour

12.15pm | 1.30pm
Mezzanine, Keyworth Centre

This is your opportunity to find out about the specific library support we offer for each course

School of Applied Sciences

Welcome to the School of Applied Sciences, which includes sport sciences, nutrition and food, human biosciences, psychology, forensics, and the National Bakery School. Today you can view our specialist labs and facilities, hear more about your subject of interest and meet our staff through a one-to-one or talk.

If you're interested in studying a postgraduate course, please attend a course specific one-to-one session. You're also welcome to attend any of the talks, interactive sessions and tours.

One-to-ones

Applied Biology
Applied Sciences Extended Degree Programme
National Bakery School
Bioscience
Food and Nutrition Sciences
Food Science
Forensic Science
Human Nutrition
Psychology
Sports Coaching and Analysis
Sports and Exercise Science

K305
Keyworth
Centre
11am–3pm

Talks

Bioscience, Food, Forensics and Sport Science

11am–11.30am | 1pm–1.30pm
Lecture Theatre A, Keyworth Centre

Hear about the courses, student experience, facilities and more.

Psychology

11.15am–12pm | 1.30pm–2.15pm
Lecture Theatre B, Keyworth Centre

Hear about the courses, student experience, facilities and more.



Find your way around

K= Keyworth Centre. (Room number denotes floor e.g K303 is on the 3rd floor. No number = ground floor).
Lecture Theatres are located in the Keyworth Centre, ground floor

Interactive sessions

Food, Nutrition and Bakery

12pm–12.30pm | 1.30pm–2pm
K304

Visit the oldest established bakery school in the world and tour our food product development and science labs.

Forensics

12pm–12.30pm | 1.30pm–2pm
K301

Tour of our scene labs which include DNA analysis, crime scene analysis, fire and explosion facilities, and observe some of our outstanding equipment.

Psychology

12pm–12.45pm | 2.15pm–3pm
Lecture Theatre B, Keyworth Centre

Explore some of the teaching and social spaces in the division of Psychology including a visit to the bar lab which is used for alcohol related research, the eye-tracker lab and other laboratories used for psychology research.

Sports

12pm–12.30pm | 1.30pm–2pm
K303

Tour the Gait Lab and Human Performance Centre, and hear about the teaching, learning and research activities, which take place in there.

Please note children under the age of 16 are not able to participate in these sessions due to health and safety requirements.

School of Arts and Creative Industries



Find your way around

LR= London Road Building. (Room number denotes floor e.g LR120 is on the 1st floor.)

One-to-ones

Creative Advertising with Marketing
Digital Design
English with Creative Writing
Fashion Promotion with Marketing*
Film Practice and Film Studies
Game Design and Development
Journalism
Music and Sound Design*
Music Industry Management with Marketing*
Photography
Visual Effects

11am–11.30am | 12pm–3pm

Dance and Performance*
Drama and Applied Theatre*
Drama and English*
Drama and Performance
Technical Theatre*

11am–12pm | 2pm–3pm



LR119,
London Road
Building



Edric Theatre,
Student
Centre

Talks and Tours

School of Arts and Creative Industries

11.30am–12pm

Castle Theatre, London Road

Division of the Creative Industries

12.30pm–1pm

Elephant Studios Cinema,
London Road

Elephant Studios at LSBU

Tours will depart regularly
throughout the day

Elephant Studios, Concourse

Hear about the courses, student experience, facilities and more.

Find out about our newest division and it's two new courses
Fashion Promotion with Marketing and Music Industry Management with Marketing.

Tour our multi-million pound media technology facilities.

Interactive sessions

Drama and Performance

1.15pm–2pm

Edric Theatre, Student Centre

Technical Theatre*

Edric Theatre, Student Centre

Digital Design

12.30pm–1.15pm

Elephant Studios concourse

English with Creative Writing

1.15pm–2.30pm

Elephant Studios concourse

Film Practice

12.30pm–1.15pm

Elephant Studios concourse

Film Studies

1.15pm–2.30pm

Elephant Studios concourse

Game Design and Development

1.15pm–2.30pm

Elephant Studios concourse

Journalism

12.30pm–1.15pm

Elephant Studios concourse

Photography

1.15pm–2.30pm

Elephant Studios concourse

Music and Sound Design

2pm–2.45pm

Elephant Studios concourse

Visual Effects

12.30pm–1.15pm

Elephant Studios concourse

Creative Advertising with Marketing

12.30pm–1.15pm

Elephant Studios concourse

Interactive session and presentation, following the Mind the Gap! performance.

Demonstration at 12pm–12.30pm
Course presentation at 1.30pm–2pm

An introduction to Digital Design with the chance to work together designing in the MacLab in Elephant Studios.

Find out more about these courses, and explore different ways to critically engage with literary texts.

Join a creative film making exercise in our studio equipped with Arri Digital Cinema Cameras, green screen, studio lighting and post-production equipment.

Visit our cinema with 4k projector, and hear more about the exciting blend of theory and practice that you'll experience on the course.

Visit our dedicated gaming lab and experience what you can expect from the course while starting to work on developing your own games.

Get hands-on experience of our newsroom and find out what it will be like to work as a reporter for JLDN, our live YouTube show.

See examples of current projects, and learn about unique professional practice opportunities in our high end photography studio and print lab.

Find out more about the course, our sound studios and innovative recording equipment.

An overview of some of the basic techniques used to create the effects for well-known films such as Star Wars and Transformers.

Find out more about how the course provides creative and practical skills for a career in advertising, digital marketing and the wider creative industries.

School of **The Built Environment and Architecture**

Welcome to one of the UK's largest building schools. Today we're offering you the chance to see the future of architecture in our Digital Architecture Robotics lab, to view the specialist facilities our students work in on one of our tours, and to hear more about your subject of interest and meet our staff through a one-to-one or talk.

One-to-ones

Architecture
Architectural Engineering
Architectural Technology
Built Environment Extended Degree
Building Services Engineering
Building Surveying
Civil Engineering
Commercial Management
Construction Management
Environmental and Architectural Acoustics
Property Management
Quantity Surveying
Real Estate
Structural Engineering
Sustainable Energy Systems
Transport Engineering and Planning

K407
Keyworth
Centre
11am–3pm



Find your way around

Key: K= Keyworth Centre.
(Room number denotes floor
e.g K404 is on the 4th floor.
No number = ground floor)

If you're interested in studying a postgraduate course, please attend a course specific one-to-one session. You're also welcome to attend any of the talks, interactive sessions and tours.

Talks

Architecture

12pm–12.30pm (+30 mins Q&A)
K402

Hear about our diverse studio culture, and how our architecture courses prepare you for an exciting creative career.

Civil and Building Services Engineering

1.15pm–1.45pm (+30 mins Q&A)
K806

We offer a range of undergraduate and postgraduate courses including part-time or employer sponsored options, come and find out more.

Construction, Property and Surveying

11.15am–11.45am (+30 mins Q&A) | K806
1.30pm–2pm (+30 mins Q&A) | K402

All our courses in this area are fully RICS accredited. Find out more about how they prepare you for your career.

Tours

Architecture

12.30pm–1pm
K411

Get inspired by our studio spaces, with great views across central London.

Building Services

11.45am–12.30pm | 2pm–2.45pm
K419

We're the number one London university for learning resources in building (NSS 2016) – come and see why.

Civil Engineering

11am–11.45am | 1.45pm–2.30pm
K417

Tour the labs and facilities.



School of Business

Forward-thinking business education is all about offering career development outside as well as inside the classroom. And that's just what we deliver. We'll help you develop your CV and confidence through: consultancy projects, live briefs, work placements, business games and simulations. There are many opportunities to connect with employers too – through our business networks, our new Business Solutions Centre, partnerships with universities, volunteering, research projects and social enterprises. Come along to our showcase session to see how the School of Business can help you develop and prepare for future employment.

One-to-ones

Accounting and Finance
Business and Enterprise
Business Management
Business Management (multiple pathways)
Business Studies
Economics
Economics (multiple pathways)
Management
MBA
Marketing (multiple pathways)
Human Resources

K307,
Keyworth
Centre
11am–3pm

*Closed 12pm–1pm during
School of Business showcase*

Find your way around

K= Keyworth Centre. (Room number denotes floor
e.g K307 is on the 3rd floor. No number = ground floor)
Lecture Theatre A is located in the Keyworth Building, ground floor.



If you're interested in studying a postgraduate course, please attend a course specific one-to-one session. You're also welcome to attend any of the talks, interactive sessions and tours.

Talks

The School of Business Showcase

12pm–1pm

Lecture Theatre A, Keyworth Centre

Come along to this interactive session, where you'll get to see some of our leading academic experts talk about careers, employment trends, and the reality of the skills employers look for – and how the Business School can help build both your CV and your confidence. They'll be audience participation, advice and tips from Business School alum, and plenty of motivational thinking to focus and inspire you.



School of Engineering

Welcome to the School of Engineering, where we've been educating engineers for over 100 years. It's not just about history; we combine experienced teaching with brand new facilities. Make sure you visit our Virtual Engineering Suite to see the future of engineering, go on a laboratory tour, and attend a talk to hear about how our courses and teaching prepare you for your career.

One-to-ones

Advanced Vehicle Engineering	Internet, Mobile Systems and Applications
Applied Computing	Mechanical Engineering
Business Information Technology	Mechatronics
Chemical and Process Engineering	Petroleum Engineering
Computer Engineering	Product Design
Computer Science	Special Effects Design
Computer Systems and Networks	Systems and Cyber Security
Data Science	Telecommunications Engineering
Electrical and Electronic Engineering	Web Development
Electrical Engineering and Power Electronics	
Engineering Extended Degree Programme	
Engineering Product Design	
Engineering Project Management	

K405
Keyworth
Centre
11am–3pm

Interactive sessions

Virtual Engineering
12.40pm–1.25pm |
K415

The Virtual Engineering Suite allows our students to construct digital models and interact with their projects in augmented reality before construction.

Usability experiment
12.30pm–1pm
K413

Gain an insight into some of the activities our computer science students undertake as part of their studies.

Tours

Chemical and Petroleum Engineering
1.30pm–2.15pm
K413

See the labs and facilities that our students use for research and to perform experiments.

Computer Science and Informatics
1.30pm–2.15pm
K413

View the computer labs that support industry-standard software.

Electrical and Electronic
1pm–1.45pm
K413

Explore the workshops and labs used for designing, making and testing electrical products.

Mechanical Engineering and Design
12.15pm–12.45pm | 1.45pm–2.15pm
K413

Tour the workshops, facilities and equipment our students use to create their projects.

If you're interested in studying a postgraduate course, please attend a course specific one-to-one session. You're also welcome to attend any of the talks, interactive sessions and tours.

Talks

Chemical and Petroleum Engineering
12.45pm–1.15pm
K403

Hear about the courses in this area that are helping 'future proof' our graduates.

Computer Science and Informatics
12pm–12.30pm
K403

We're the No. 2 London Modern University for 'Student Experience' in the area of Computer Science (*Sunday Times League Table 2016*) – come and hear why.

Electrical and Electronic
12.15pm–12.45pm
K404

Hear about the courses, student experience, facilities and more.

Mechanical Engineering and Design
11.45am–12.15pm | 1.15pm–1.45pm
K404

Learn about what makes us a top 10 UK University for teaching quality and student experience in this area (*Sunday Times League Table 2016*).

School of Health and Social Care

One-to-ones

Acupuncture
Chiropractic
Chiropractic Degree Programme
Diagnostic and Therapeutic Radiography
Operating Department Practice
Physiotherapy
Sports Rehabilitation

K507

Adult Nursing
Children's Nursing
Learning Disability Nursing
Mental Health Nursing

K505

Midwifery | K513

Occupational Therapy | K504

Social Work | K515 / K517

Keyworth Centre
11am-3pm



Interactive Sessions and Tours

Adult Nursing

Every 20 mins
V211

Visit the ward and meet different modes of fidelity simulation mannequins, used by nursing students, who mimic the physiological changes that occur in a sick patient.

Children's Nursing

Every 20 mins
V211

Visit Rainbow Ward and meet simulation mannequin Sam. Experience feeling for a pulse and how equipment can simulate patient deteriorating allowing interventions in a safe environment.

Health and Social Care

Every 20 mins
V211

A general tour through all facilities led by Health Student Ambassadors. Explore facilities and take an opportunity to ask questions.

Midwifery

Every 20 mins
V211

Meet simulation mannequin Mavis who attends clinical appointments and progresses through the stages of pregnancy until she delivers her baby with the help of a midwife and a student midwife.

Partners

Meet our partner trusts

- Barking, Havering and Redbridge University Hospitals
- Barts Health NHS Trust
- Chelsea and Westminster Hospital
- Great Ormond Street Hospital
- Guy's and St Thomas NHS Foundation Trust
- Homerton University Hospital NHS Trust
- Kings College London, University College London Hospitals

V211
K2
11am-3pm

Talks >>

Talks

Acupuncture

12pm–1pm
Caxton House 📍

Learn about the art and science of traditional Chinese medicine.

Adult Nursing

11.15am – 12pm | 1.15pm – 2pm
VG06 📍

Join the Adult Nursing team who have an extensive knowledge of working in a range of different specialisms within Adult Nursing.

Children's Nursing

11.15am – 12pm | 1.15pm – 2pm
VG10 📍

Join the Children's Nursing team who have an extensive knowledge of working in a range of different specialisms within Children's Nursing

Diagnostic and Therapeutic Radiography

12.15pm – 1pm
V114 📍

Experience a life size simulation of the clinical labs and use VERT™ system to treat your first ever patient and familiarise yourself with the mannequins.

Learning Disability Nursing

11.15am–12pm | 1.15pm – 2pm
K509 📍

Hear how Learning Disability Nurses work with people across the lifespan, combining clinical expertise with emotional intelligence and creative communication skills.

Health and Social Care: Administration and Management

1pm–2pm
K509 📍

Find out about the Institute of Vocational Learning (IoVL) and the current provision in relation to Continuous personal and professional development (CPPD), and have an introduction to BSc (Hons) Health and Social Care: Administration and Management.

Mental Health Nursing

12.15pm – 1pm | 2pm–2.30pm
VG10 📍

Join the Mental Health Nursing team to learn more about this demanding and rewarding career choice and learn about the different specialisms within Mental Health Nursing

Talks

Midwifery

12.15pm – 1pm | 2pm–2.30pm
VG06 📍

Join the Midwifery team who have an extensive knowledge of working in a range of different specialisms within Midwifery.

Occupational Therapy

11.15am–12pm | 1.15pm – 2pm
V114 📍

See the purpose ward simulation environments, (kitchen, bathroom, bedroom), where occupational therapy is practiced with a range of everyday tasks.

Operating Department Practice

11.15am–12pm
V318 📍

The skills lab allows you to experience patient scenarios and safely practice skills. See an informative demo of theatre equipment and mannequins.

Physiotherapy

11.15am–12pm | 1.15pm – 2pm
K503 📍

Join the Physiotherapy team who have an extensive knowledge of working in a range of different specialisms within Physiotherapy.

Sports Rehabilitation

12.15pm – 1pm | 2pm–2.30p
K503 📍

Join the Sports Rehabilitation team who have an extensive knowledge of working in a range of different specialisms within Sports Rehabilitation.



Find your way around

Key: V= K2 Building.
(Room number denotes floor e.g V310 is on the 3rd floor. VG = ground floor). K= Keyworth Centre.
(Room number denotes floor e.g K505 is on the 5th floor.



School of Law and Social Sciences

Modern life is complex – and rapid social change brings hazards as well as opportunities. Our community (our students, staff and alumni) address the challenges of modern London life, and life as a global citizen. And we make a difference – through education, sharing ideas, research, volunteering, policy making, shaping and activism.



Tours Talks and interactive sessions

One-to-ones

- Education
- Teacher Training
- Law
- Criminology
- Sociology
- Politics
- International Relations
- History
- Tourism and Hospitality Management
- Events and Entertainment Management
- Planning
- Housing
- Regeneration
- Human Geography
- International Development

**K207
Keyworth
Centre
11am–3pm**



Find your way around

K= Keyworth Building. (Room number denotes floor e.g K207 is on the 2nd floor.) V= K2 Building.

(Room number denotes floor e.g V110 is on the 1st floor.)

If you're interested in studying a postgraduate course, please attend a course specific one-to-one session. You're also welcome to attend any of the talks, interactive sessions and tours.

Education: Today and Tomorrow

12pm–1pm | 2pm–3pm
V110

Explore the range of courses on offer in Education and experience the teaching environment including a tour of the classrooms

Inspired by Law

12pm–1pm
Lecture Theatre B

We are the No. 1 London University for teaching quality in Law (*Sunday Times League Table 2017*) – come and find out why

Urban, Environment and Leisure Studies

11am–12pm
K206

Explore the range of courses we offer in Human Geography; Planning and Regeneration; Housing; Tourism and Hospitality Management; Events and Entertainment Management.

Social Sciences

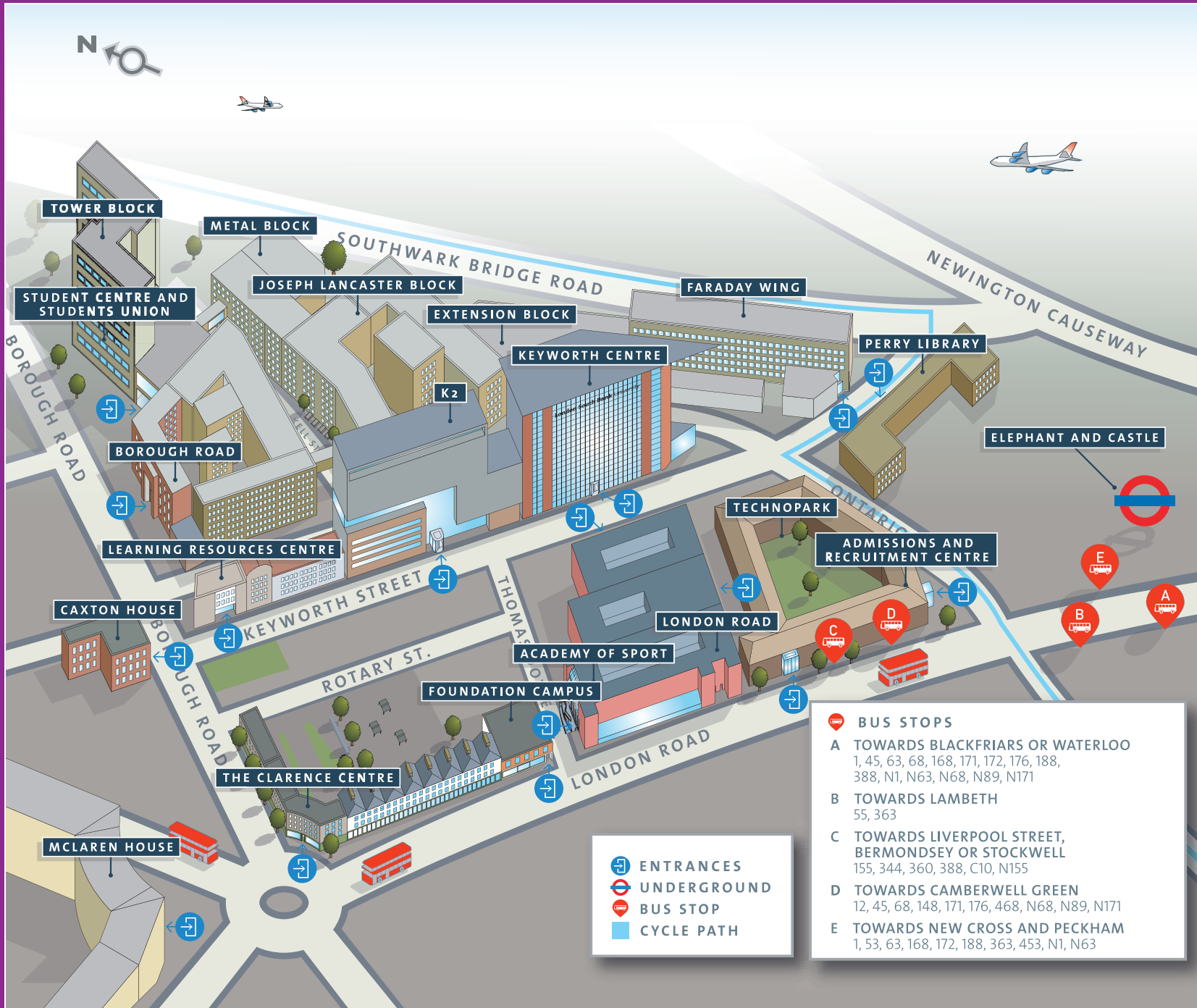
12pm–1pm
K205

History, Criminology and Sociology

Social Sciences

2pm–3pm
K205

Relations and Politics



Student centre

Academy of Sport
 Accommodation Advice
 Disability and Dyslexia Support
 Edric Theatre
 Fees and Funding
 International Student Support
 Student Services
 Employability services
 Students' Union

K2

NHS Trusts
 School of Health and Social Care
 Lab Tours

Keyworth

Campus and Accommodation
 Tours
 School of Applied Sciences
 School of the Built Environment
 and Architecture
 School of Business
 School of Engineering
 School of Health and Social Care
 School of Law and Social
 Sciences

Perry library

Tours at 12.15pm and 1.30pm

Learning Resources Centre (LRC)

Tours at 11.30am and 2.15pm

London Road

School of Arts and Creative
 Industries

Visit www.tfl.gov.uk to
 help plan your journey.
 Or visit lsbu.ac.uk
 or call 0800 923 88 88

Support Services

Admissions

K313, Keyworth Centre

Got a question about the application process? Then come and speak to one of our Admissions Team

Disability, Dyslexia and Wellbeing

Student Centre

We offer a range of support to ensure that you can succeed in your studies and promote wellbeing for all our students. Come and speak to us about any specific support you may need or just to find out more about our wellbeing services.

Student Life Centre

Student Centre

Our dedicated student support team can answer your questions about student finance.

Study Abroad

Student Centre

As an LSBU student you can study abroad for a semester or summer with no increased tuition fees. Come and find out about our partner universities across Europe, the US, China and Australia.

International

K313, Keyworth Centre

Navigating the UK visa process can be tricky, let us guide you through the process.



Accommodation that supports your studies

On average, students who live on campus get better grades. Living just minutes away from the University campus, our accommodation is a great way to meet students from different backgrounds, make new friends and focus on studies.

LSBU has 1,400 single-study bedrooms located in four locations close to the University - all of which provide a friendly, comfortable and secure home for you whilst you focus on your studies.

We have a range of rooms available to suit different budgets and all our rents are all-inclusive – so there are no hidden fees.

Come and find out more but joining one of accommodation tours departing from the Keyworth Centre Mezzanine or attend the 'Accommodation – Your Questions Answered' at 11.30am or 1.30 am in the Events theatre, Keyworth Centre.



At LSBU, enterprise is a big part of everything we do.

If you want to start your own business, gain professional experience or develop key skills for your future, our award-winning support is here to help!

Enterprise is all about unlocking your potential, seizing opportunities and thinking on your feet. That's why we provide access to networks of successful entrepreneurs, funding to make your dreams a reality, and free events and workshops to grow your connections.

Come and find out why LSBU is Entrepreneurial University of the Year by visiting the Enterprise Team in the Keyworth Lobby.



Students' Union



London South Bank Students' Union is the centre of the student social experience providing regular weekly events for all students at LSBU.

The Union features a number of extra-curricular activities that you can get involved in, such as a wide range of sports teams, societies, and volunteering that cover cultural, political and social interests. Beyond this, the Students' Union also provides a range of services to help you with life inside and outside University, if you run into trouble you can talk to one of the specialist advisors in confidence about a range of matters.

The Students' Union is led by four elected full-time officers who ensure that our students are being properly represented. These officers don't have to be graduates; often officers interrupt their studies and take a year out and are supported by a team of full-time staff members. The Students' Union is located in the Student Life Centre building, alongside the University support services.

www.LBSBU.org

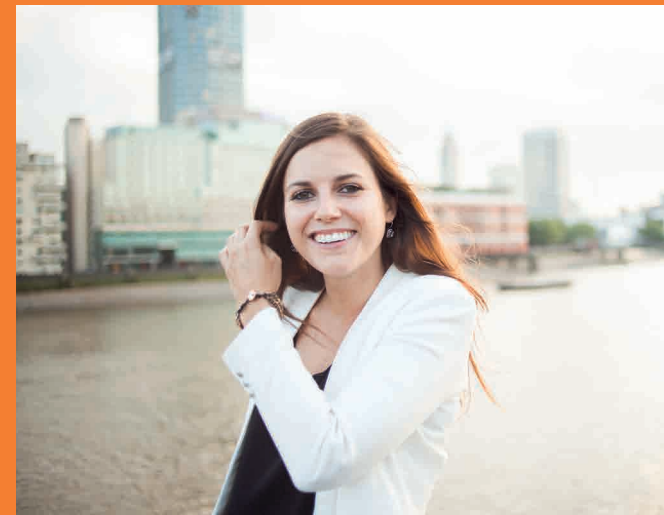
Employability

London South Bank University has an outstanding record for graduate employment. It is a shining example of all the best qualities held by the modern university sector. Year after year, the university appears close to the top of our tables for graduate employment and graduate salaries" - The Sunday Times Good University Guide

Meet the Employability Service in the Keyworth Lobby to find out how we can support you to secure valuable work experience, placements, prepare for interviews and help you find the job that's right for you.

And it's not just when you're graduating that you can access our services, through our new recruitment agency we'll be offering part-time jobs to support you through your study.

With 94.9% of our students in work or further study 6 months after graduating, we've helped thousands of people just like you every year to take the next step on the career ladder – and that's why we are University of the Year for Graduate Employability.



LSBU Alumni

Did you know there are over 200,000 former LSBU students?

That's a lot of talent, ideas and experience for you to build upon. You don't even have to wait until graduation to access these influential, real-world connections.

LSBU Alumni's global membership programme is available to all students from day one.

As a student member you'll be invited to events where you can meet and network with alumni, hear more about their careers and go further in whatever your chosen field.

Your alumni, your future.

 @LSBUalumni



Index

Course	Page	One-to-one room
Accounting and Finance	10–11	K307, Keyworth Centre
Acupuncture	16–19	K507, Keyworth Centre
Adult Nursing	16–19	K505, Keyworth Centre
Advanced Vehicle Engineering	14–15	K405, Keyworth Centre
Applied Biology	4–5	K305, Keyworth Centre
Applied Computing	14–15	K405, Keyworth Centre
Applied Sciences Extended Degree Programme	4–5	K305, Keyworth Centre
Architectural Engineering	8–9	K407, Keyworth Centre
Architectural Technology	8–9	K407, Keyworth Centre
Architecture	8–9	K407, Keyworth Centre
Bioscience	4–5	K305, Keyworth Centre
Building Services Engineering	8–9	K407, Keyworth Centre
Building Surveying	8–9	K407, Keyworth Centre
Built Environment Extended Degree	8–9	K407, Keyworth Centre
Business and Enterprise	10–11	K307, Keyworth Centre
Business Information Technology	14–15	K405, Keyworth Centre
Business Management	10–11	K307, Keyworth Centre
Business Management (multiple pathways)	10–11	K307, Keyworth Centre
Business Studies	10–11	K307, Keyworth Centre
Chemical and Process Engineering	14–15	K405, Keyworth Centre
Children's Nursing	16–19	K505, Keyworth Centre
Civil Engineering	8–9	K407, Keyworth Centre
Commercial Management	8–9	K407, Keyworth Centre
Computer Engineering	14–15	K405, Keyworth Centre
Computer Science	14–15	K405, Keyworth Centre
Computer Systems and Networks	14–15	K405, Keyworth Centre
Construction Management	8–9	K407, Keyworth Centre
Creative Advertising with Marketing	6–7	LR119, London Road
Criminology	20–21	K207, Keyworth Centre
Dance and Performance	6–7	Edric Theatre, Student Centre
Data Science	14–15	K405, Keyworth Centre
Diagnostic and Therapeutic Radiography	16–19	K507, Keyworth Centre
Digital Design	6–7	LR119, London Road
Drama and Applied Theatre	6–7	Edric Theatre, Student Centre

Index

Drama and English	6–7	Edric Theatre, Student Centre	Mechatronics	14–15	K405, Keyworth Centre
Drama and Performance	6–7	Edric Theatre, Student Centre	Mental Health Nursing	16–19	K505, Keyworth Centre
Economics	10–11	K307, Keyworth Centre	Midwifery	16–19	K513, Keyworth Centre
Economics (multiple pathways)	10–11	K307, Keyworth Centre	Music and Sound Design	6–7	LR119, London Road
Education	20–21	K207, Keyworth Centre	Music Industry Management with Marketing	6–7	LR119, London Road
Electrical and Electronic Engineering	14–15	K405, Keyworth Centre	National Bakery School	4–5	K305, Keyworth Centre
Electrical Engineering and Power Electronics	14–15	K405, Keyworth Centre	Occupational Therapy	16–19	K504, Keyworth Centre
Engineering Extended Degree Programme	14–15	K405, Keyworth Centre	Operating Department Practice	16–19	K507, Keyworth Centre
Engineering Product Design	14–15	K405, Keyworth Centre	Petroleum Engineering	14–15	K405, Keyworth Centre
Engineering Project Management	14–15	K405, Keyworth Centre	Photography	6–7	LR119, London Road
English with Creative Writing	6–7	LR119, London Road	Physiotherapy	16–19	K507, Keyworth Centre
Environmental and Architectural Acoustics	8–9	K407, Keyworth Centre	Planning	20–21	K207, Keyworth Centre
Events and Entertainment Management	20–21	K207, Keyworth Centre	Politics	20–21	K207, Keyworth Centre
Fashion Promotion with Marketing	6–7	LR119, London Road	Product Design	14–15	K405, Keyworth Centre
Film Practice	6–7	LR119, London Road	Property Management	8–9	K407, Keyworth Centre
Film Studies	6–7	LR119, London Road	Psychology	4–5	K305, Keyworth Centre
Food and Nutrition Sciences	4–5	K305, Keyworth Centre	Quantity Surveying	8–9	K407, Keyworth Centre
Food Science	4–5	K305, Keyworth Centre	Real Estate	8–9	K407, Keyworth Centre
Forensic Science	4–5	K305, Keyworth Centre	Regeneration	20–21	K207, Keyworth Centre
Game Design and Development	6–7	LR119, London Road	Social Work	16–19	K515/K517, Keyworth Centre
History	20–21	K207, Keyworth Centre	Sociology	20–21	K207, Keyworth Centre
Housing	20–21	K207, Keyworth Centre	Special Effects Design	14–15	K405, Keyworth Centre
Human Geography	20–21	K207, Keyworth Centre	Sports and Exercise Science	4–5	K305, Keyworth Centre
Human Nutrition	4–5	K305, Keyworth Centre	Sports Coaching and Analysis	4–5	K305, Keyworth Centre
Human Resources	10–11	K307, Keyworth Centre	Sports Rehabilitation	16–19	K507, Keyworth Centre
International Development	20–21	K207, Keyworth Centre	Structural Engineering	8–9	K407, Keyworth Centre
International Relations	20–21	K207, Keyworth Centre	Sustainable Energy Systems	8–9	K407, Keyworth Centre
Internet, Mobile Systems and Applications	14–15	K405, Keyworth Centre	Systems and Cyber Security	14–15	K405, Keyworth Centre
Journalism	6–7	LR119, London Road	Teacher Training	20–21	K207, Keyworth Centre
Law	20–21	K207, Keyworth Centre	Telecommunications Engineering	14–15	K405, Keyworth Centre
Learning Disability Nursing	16–19	K505, Keyworth Centre	Theatre Technologies	6–7	Edric Theatre, Student Centre
Management	10–11	K307, Keyworth Centre	Tourism and Hospitality Management	20–21	K207, Keyworth Centre
Marketing (multiple pathways)	10–11	K307, Keyworth Centre	Transport Engineering and Planning	8–9	K407, Keyworth Centre
MBA	10–11	K307, Keyworth Centre	Visual Effects	6–7	LR119, London Road
Mechanical Engineering	14–15	K405, Keyworth Centre	Web Development	14–15	K405, Keyworth Centre

THE  TIMES
THE SUNDAY TIMES

**GOOD
UNIVERSITY
GUIDE**
2018

UNIVERSITY
OF THE YEAR
FOR GRADUATE
EMPLOYMENT



Entrepreneurial
University of
the Year 2016

